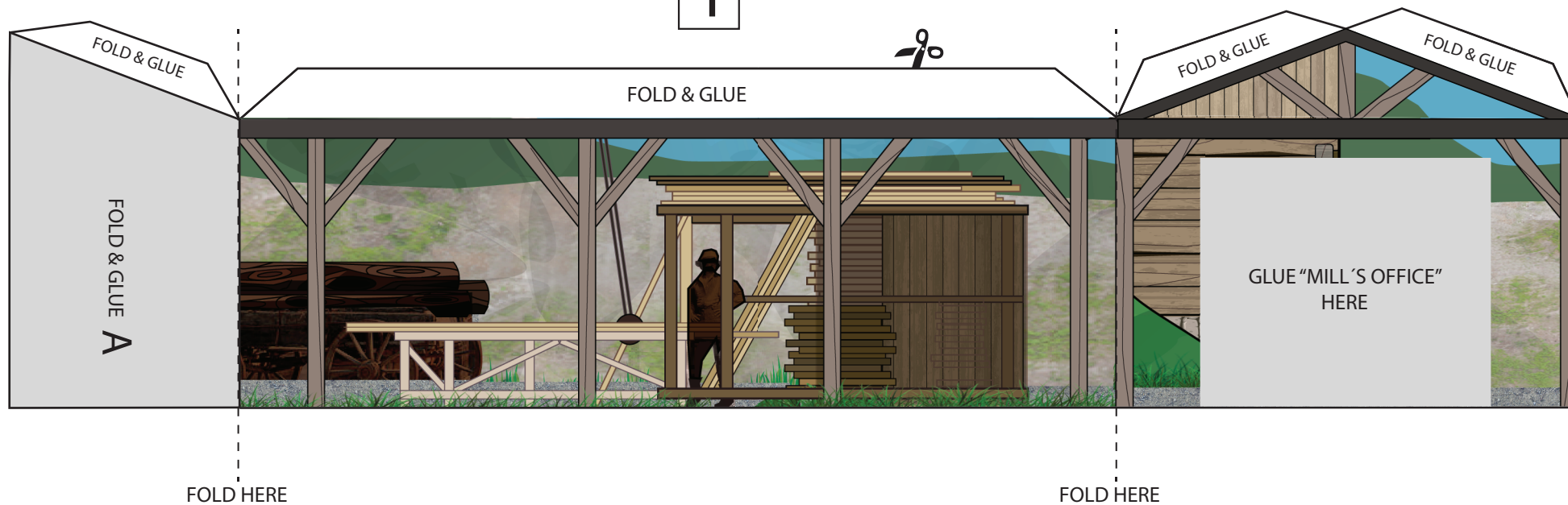
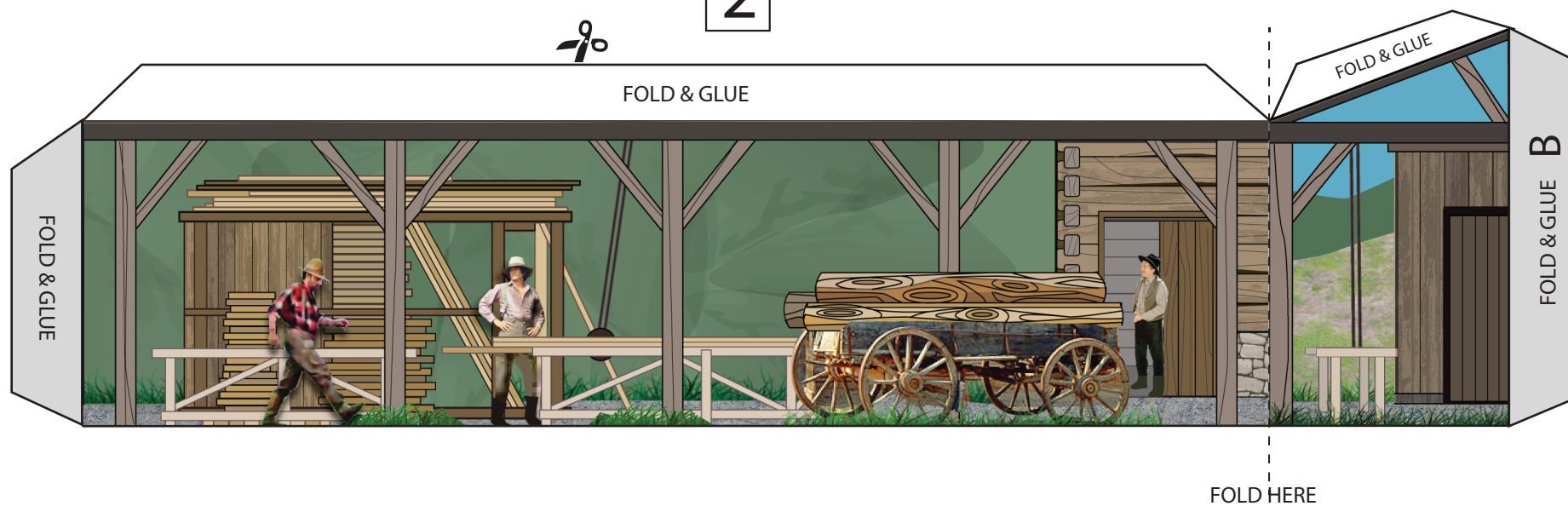


HANSON'S MILL, (LITTLE HOUSE ON THE PRAIRIE) MINIATURE PAPER MODEL
(instructions at the end of the file)

1



2

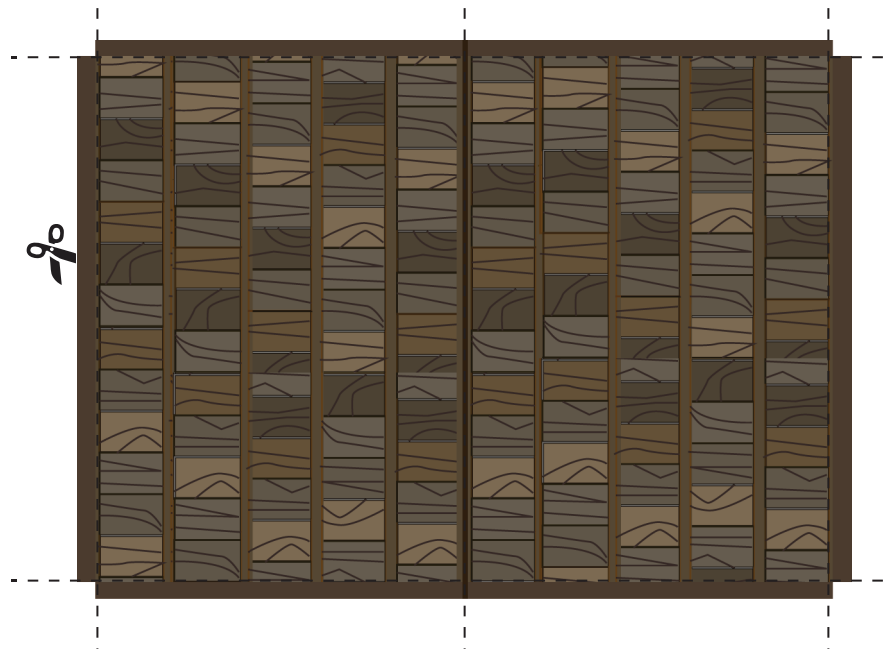


MILL'S OFFICE ROOF



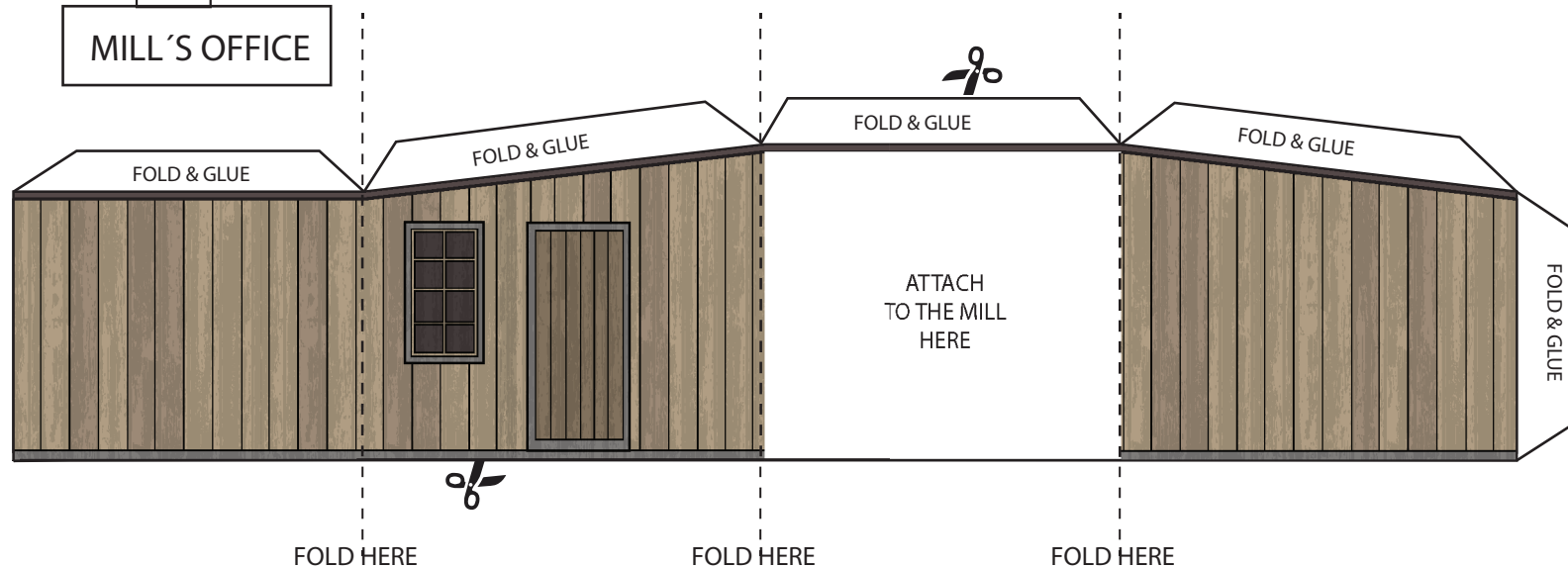
HOUSE ROOF

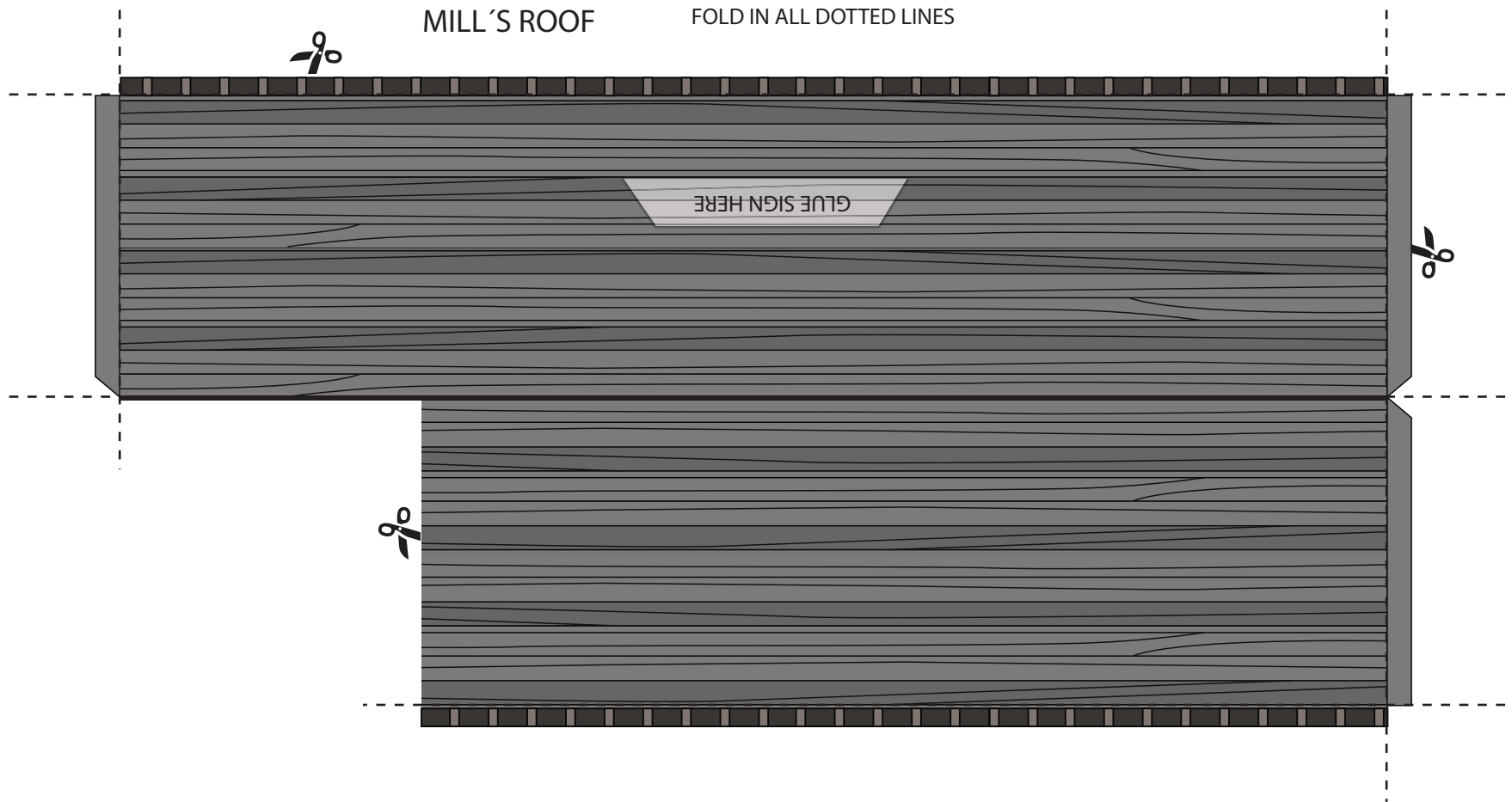
FOLD IN ALL DOTTED LINES



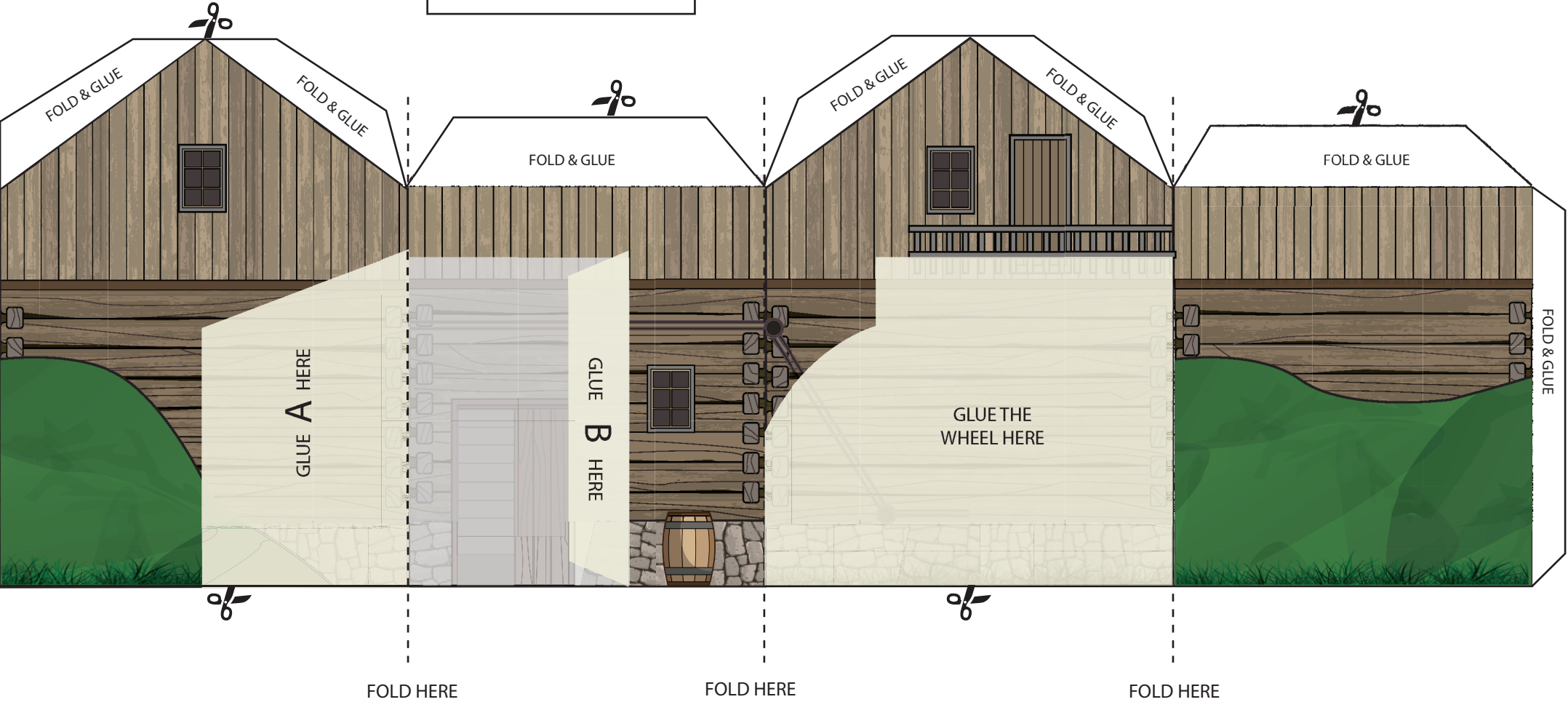
3

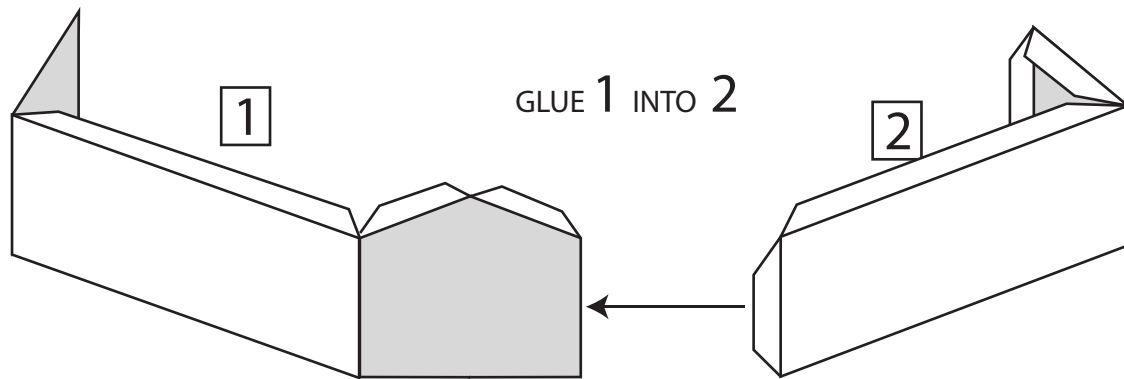
MILL'S OFFICE



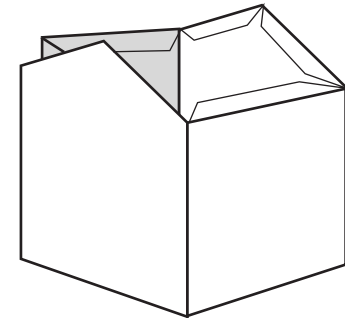


MILL'S HOUSE

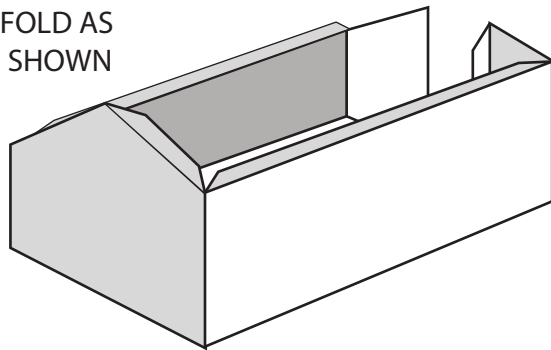




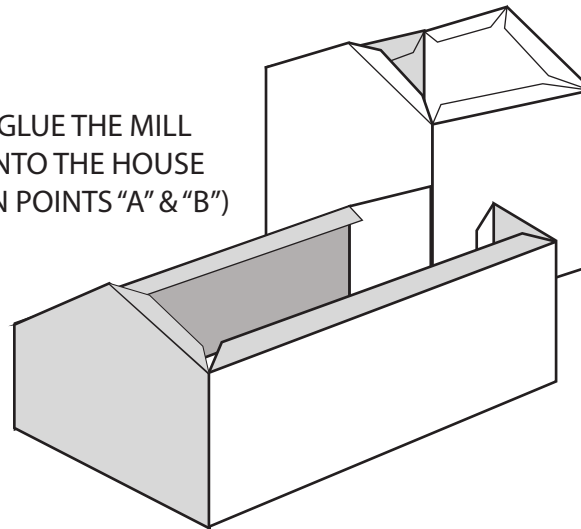
FOLD THE HOUSE
AS SHOWN

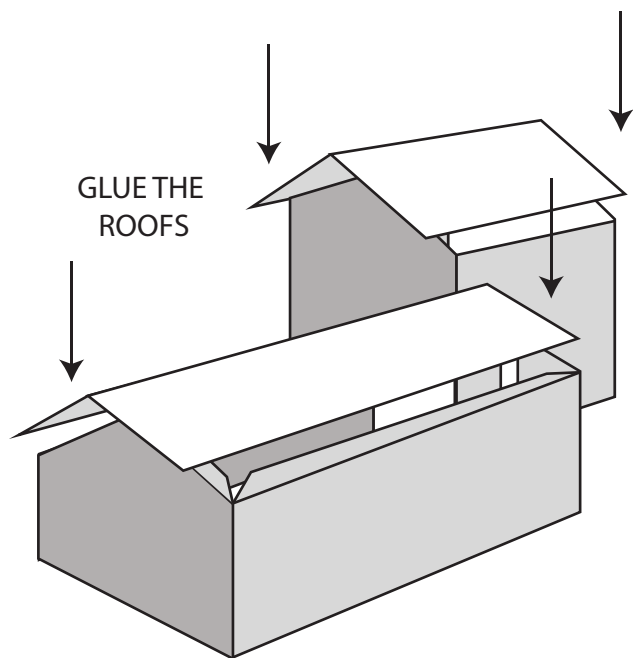


FOLD AS
SHOWN

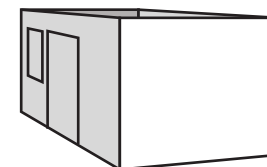


GLUE THE MILL
INTO THE HOUSE
(ON POINTS "A" & "B")

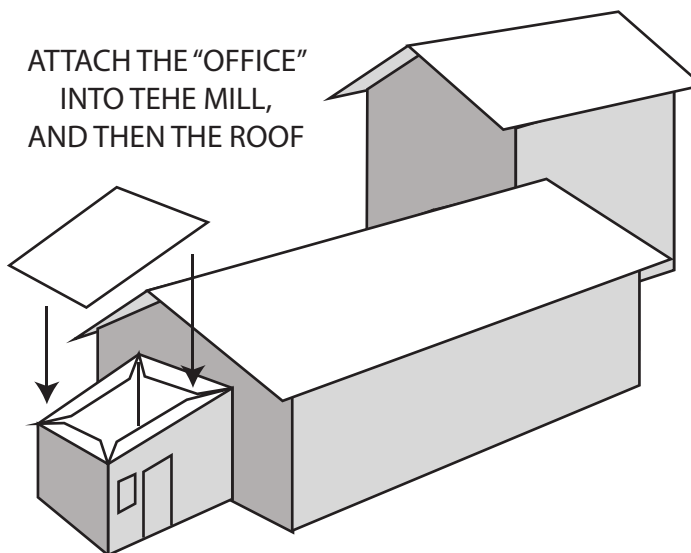




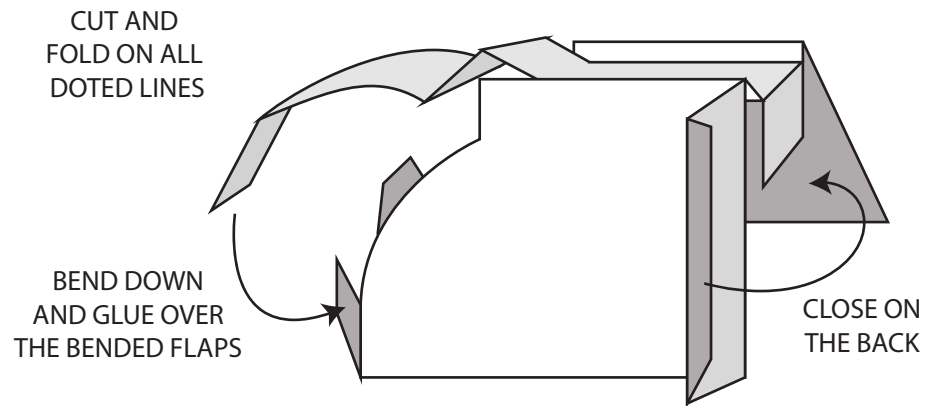
FOLD THE
MILL'S OFFICE
AS SHOWN



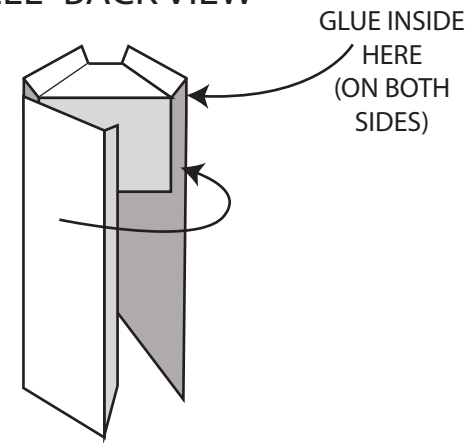
ATTACH THE "OFFICE"
INTO TEHE MILL,
AND THEN THE ROOF



WHEEL- SIDE VIEW



WHEEL- BACK VIEW



GLUE THE FINISHED WHEEL ON THE THE SIDE OF THE HOUSE WHERE IS SIGNALIZED

