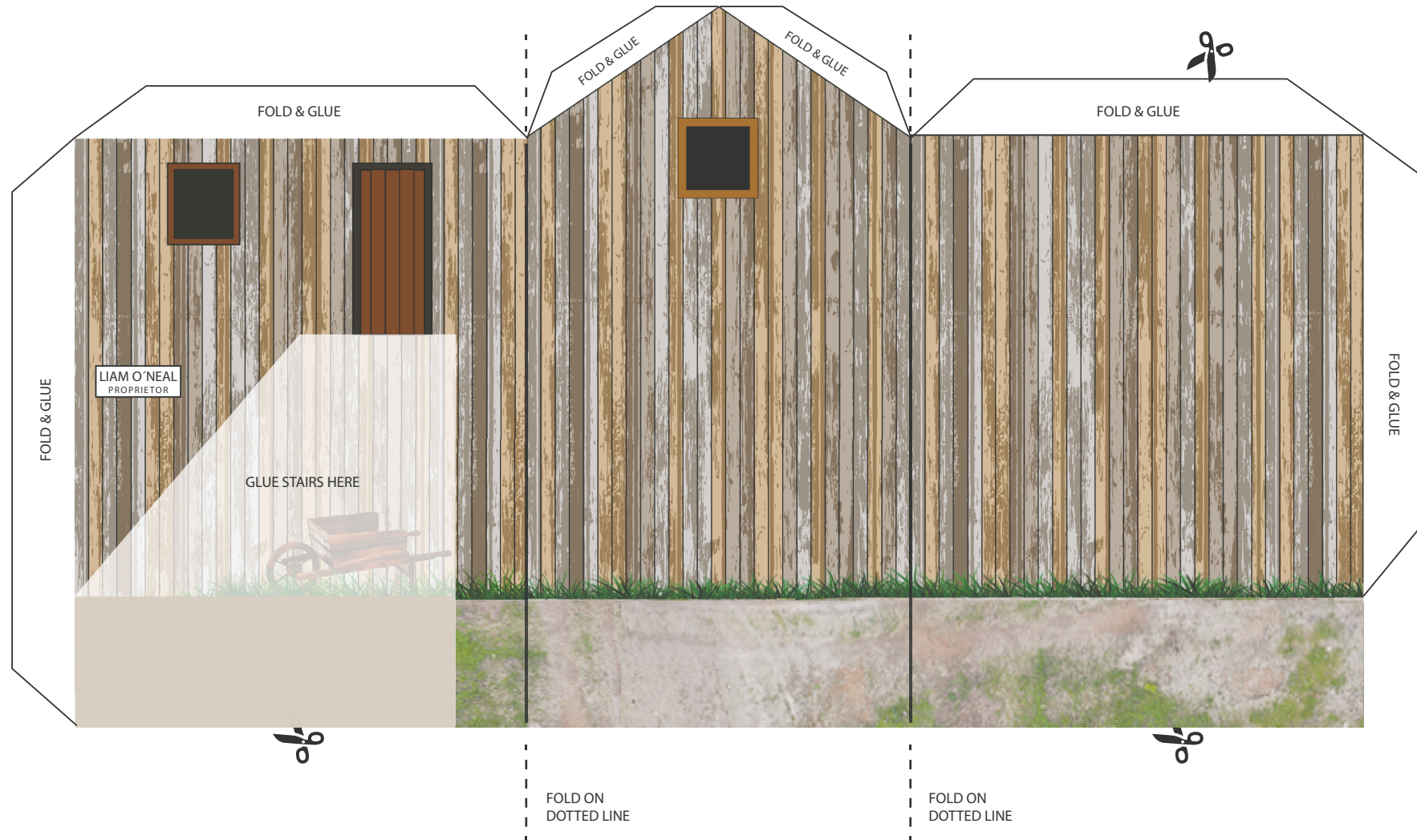
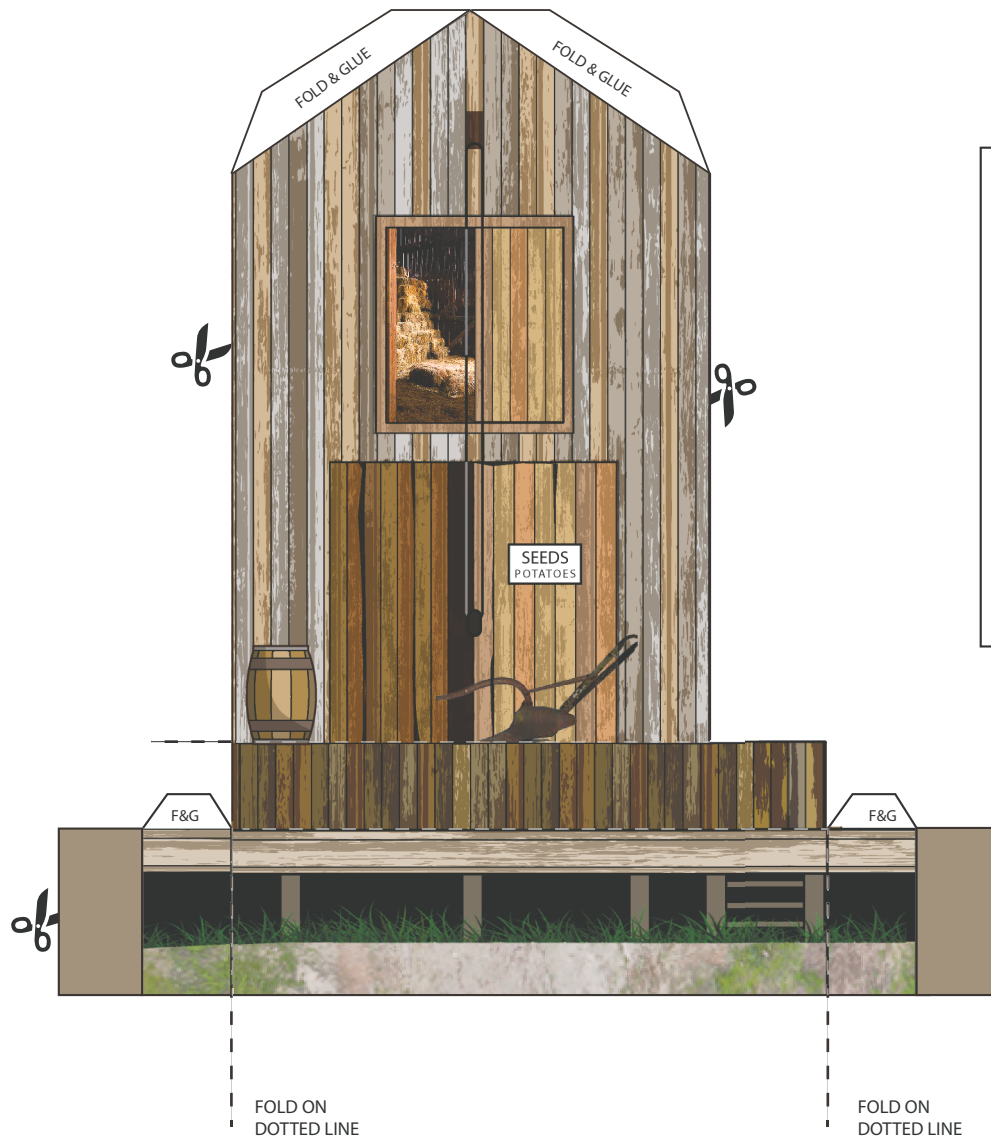


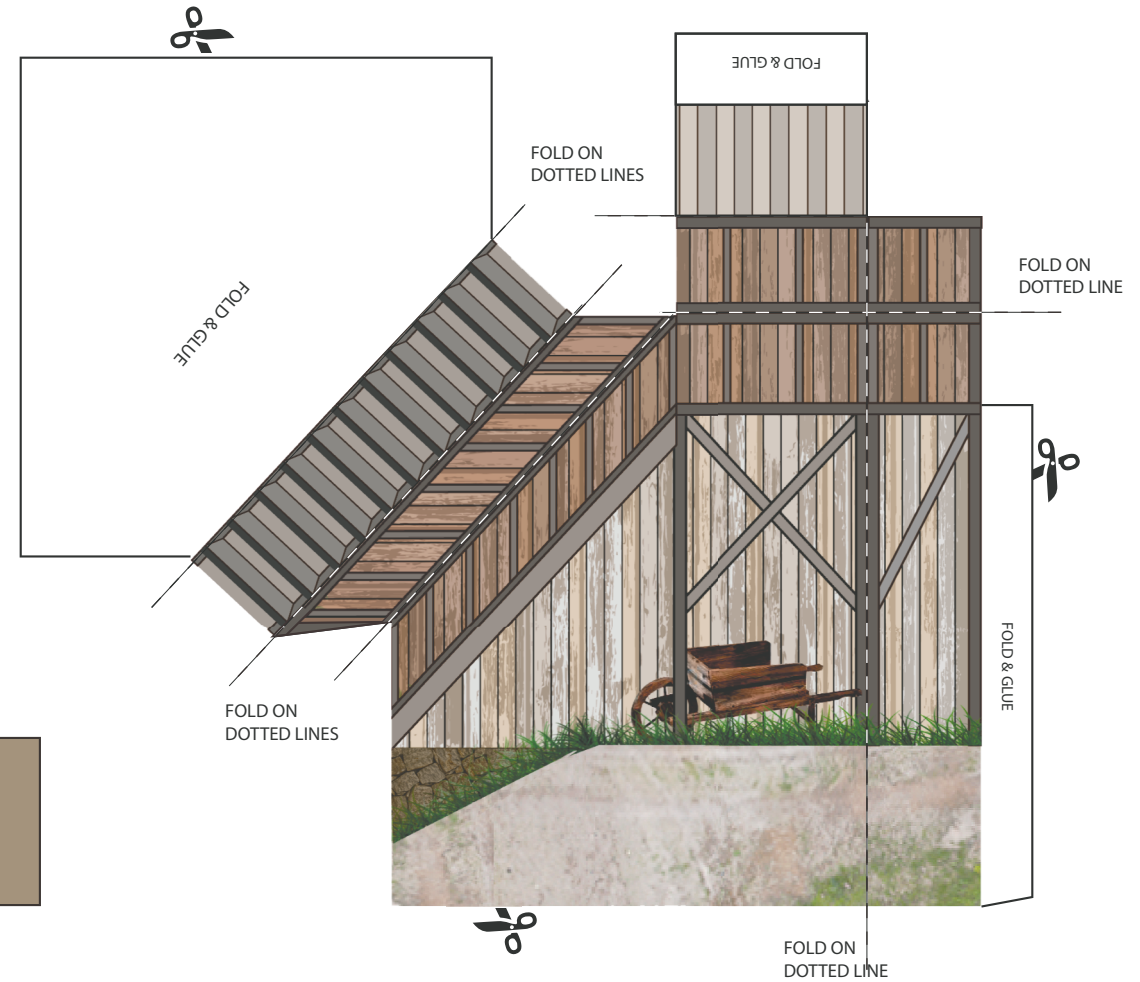
(BARN-A)



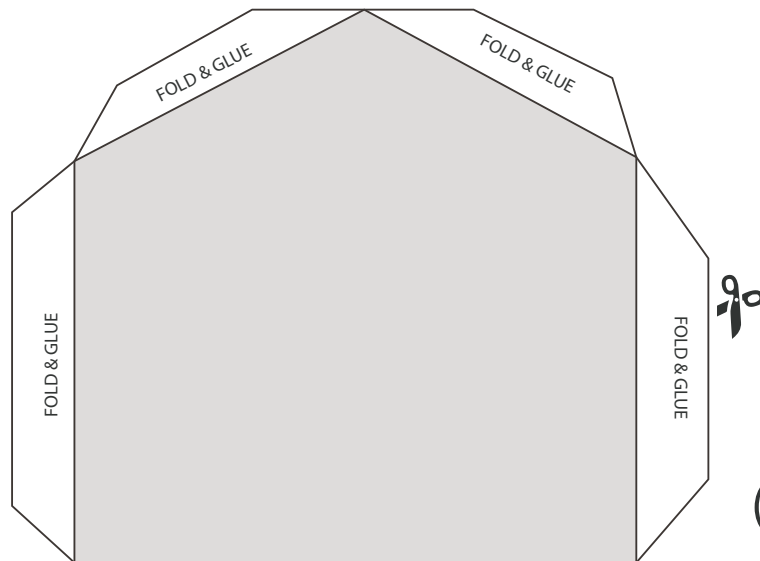
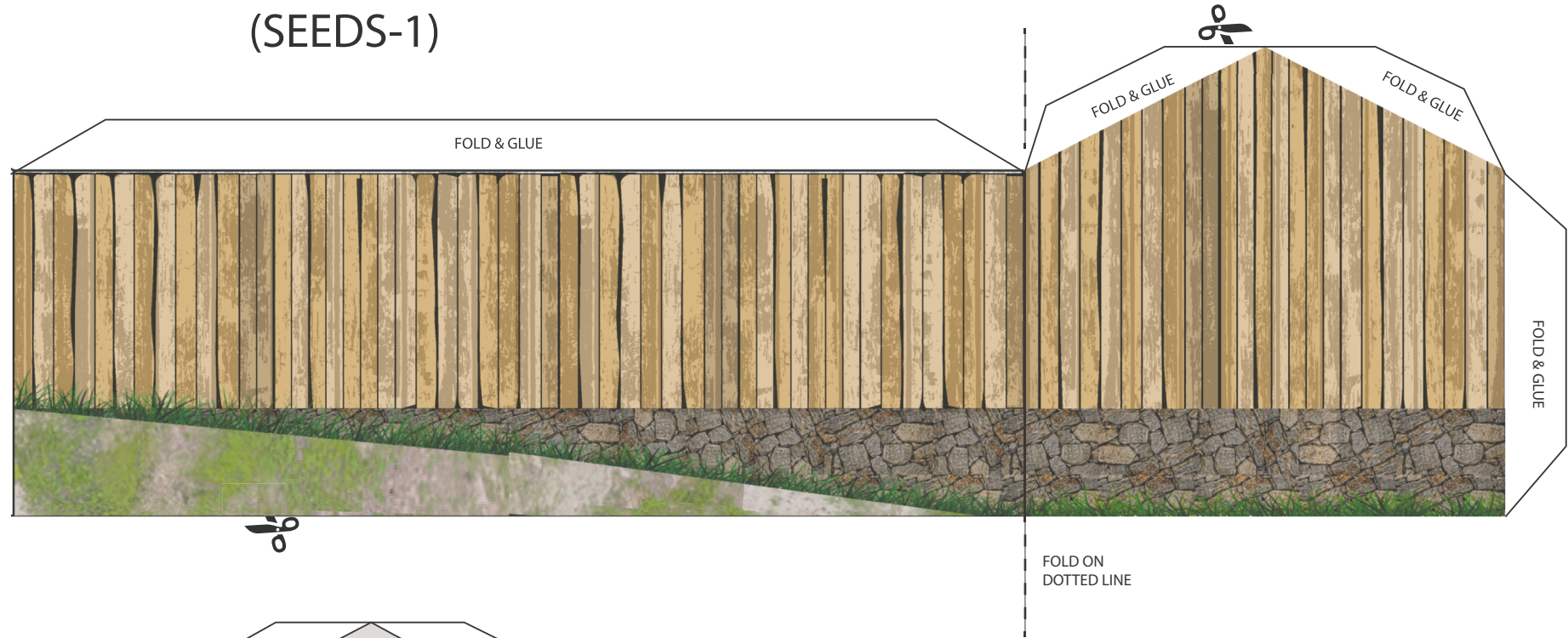
(BARN-B)



(BARN-STAIRS)



(SEEDS-1)



(SEEDS-2)



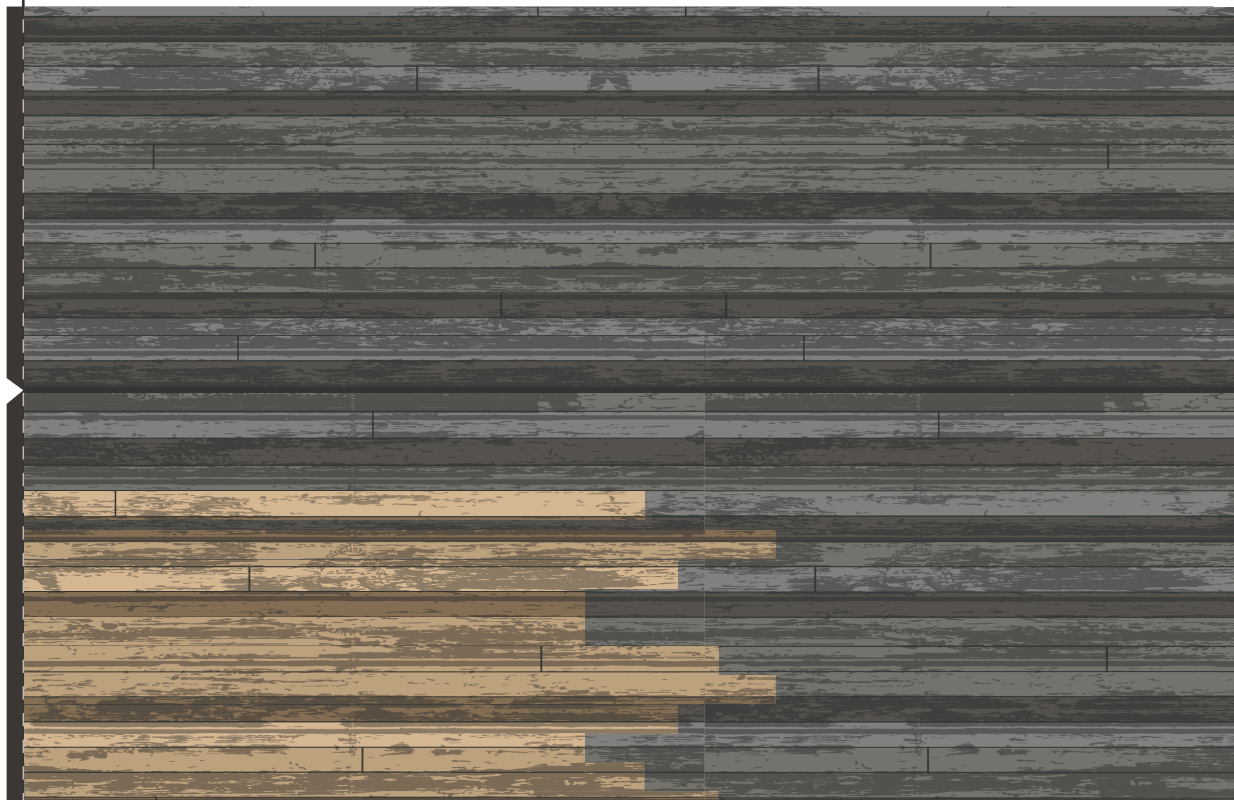
(SACS)

FOLD ON
DOTTED LINE

"SEEDS" ROOF



FOLD ON
DOTTED LINE

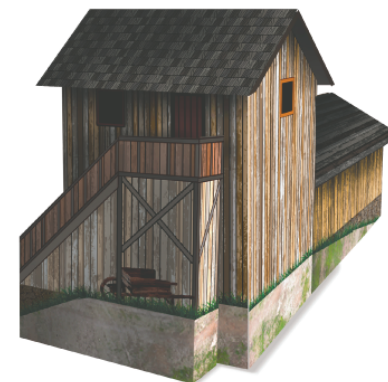


FOLD ON
DOTTED LINE

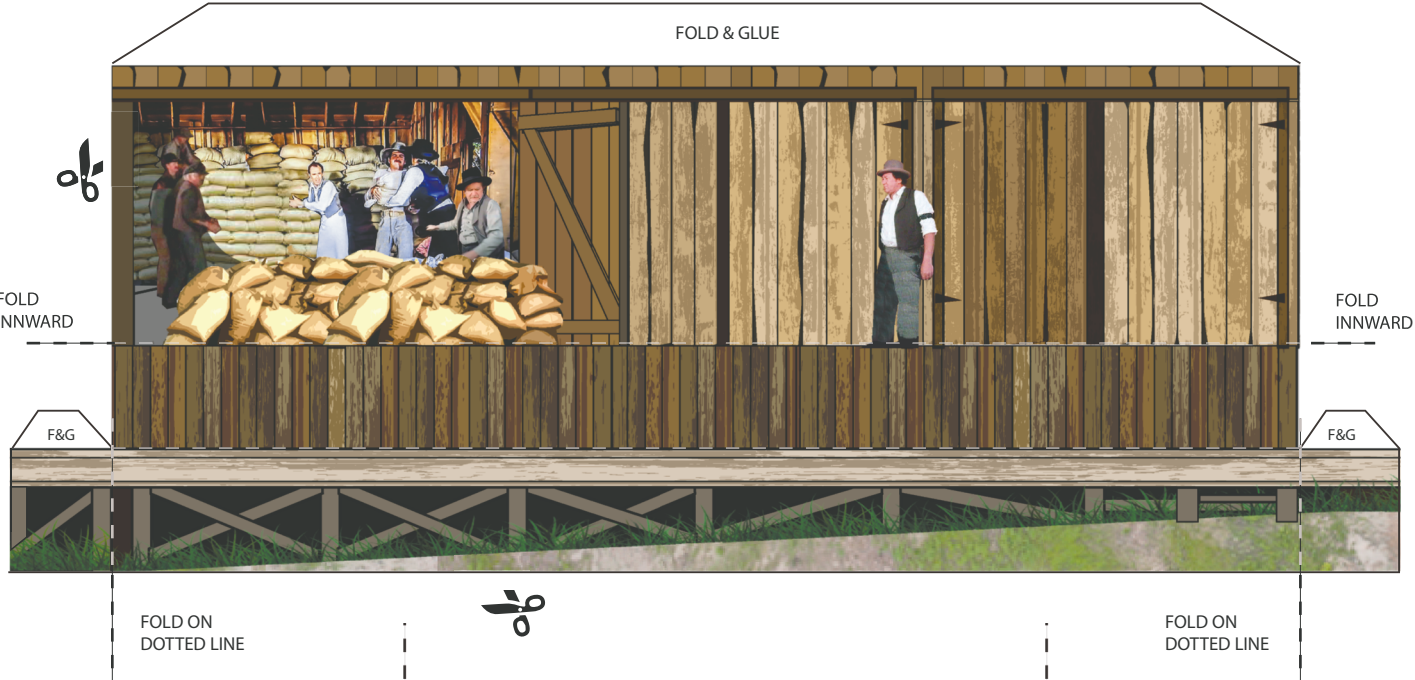


WALNUT GROVE FEED & SEED

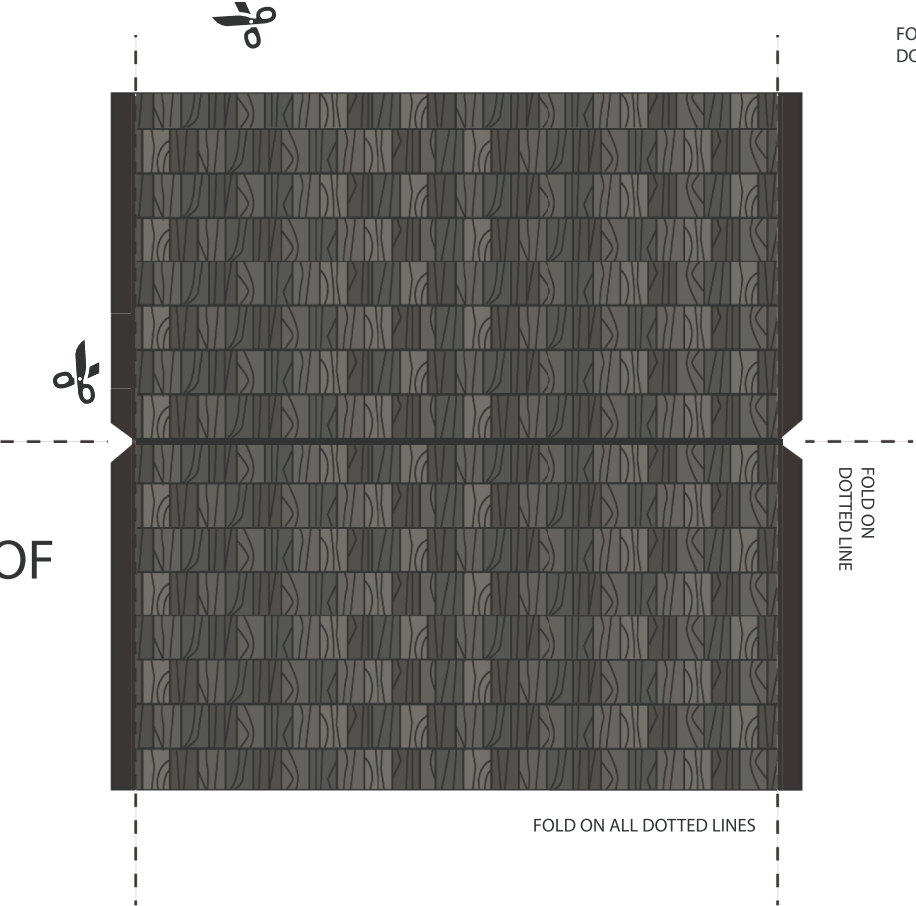
FOLD & GLUE



(SEEDS-3)

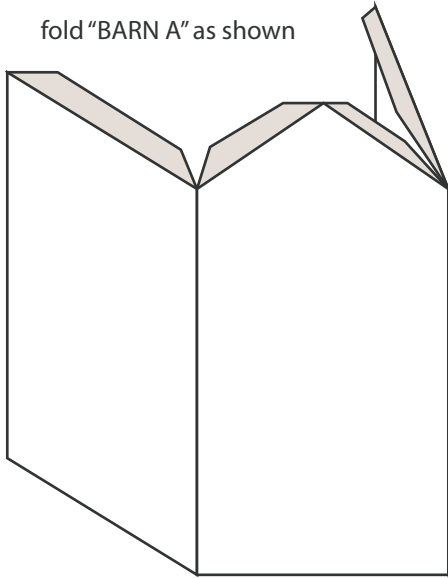


“BARN” ROOF

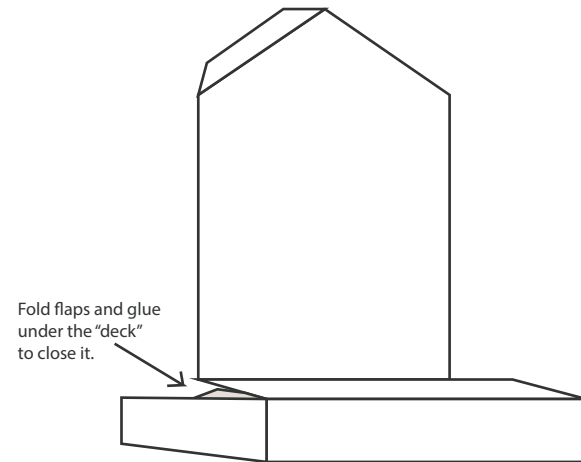


INSTRUCTIONS

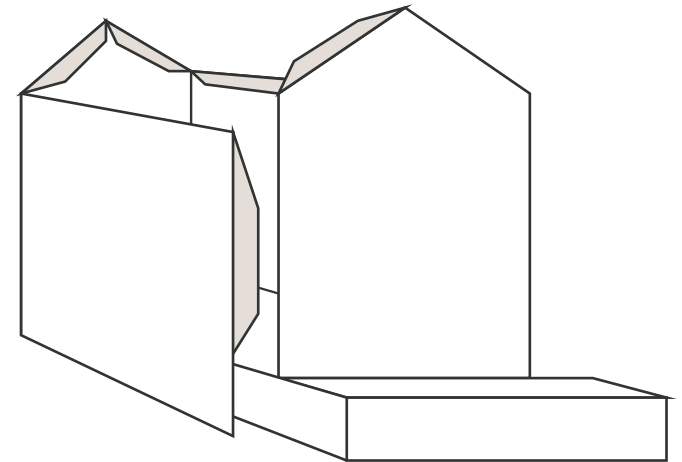
fold "BARN A" as shown



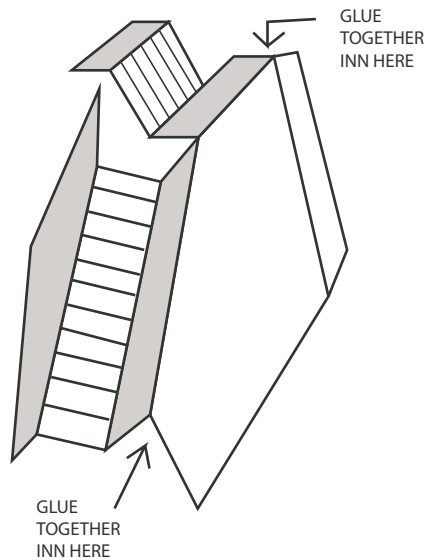
fold "BARN B" as shown



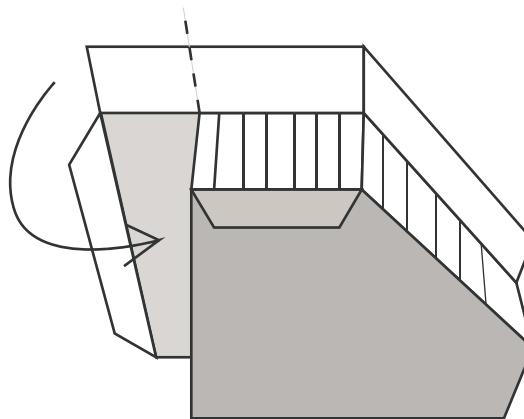
Glue "BARN A" to "BARN B" as shown, to close the form.



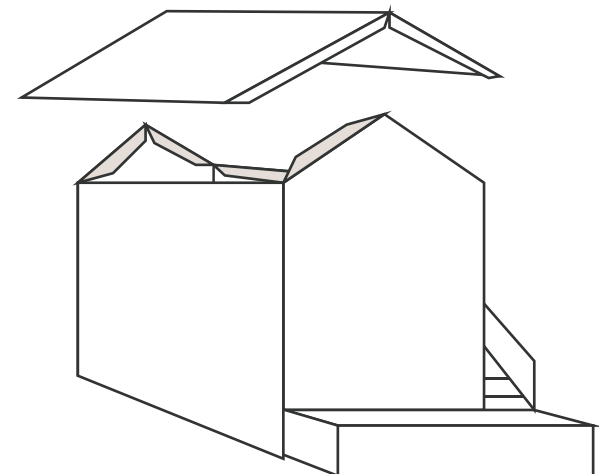
Fold BARN STAIRS as shown, glue it in place into the BARN module, where indicated



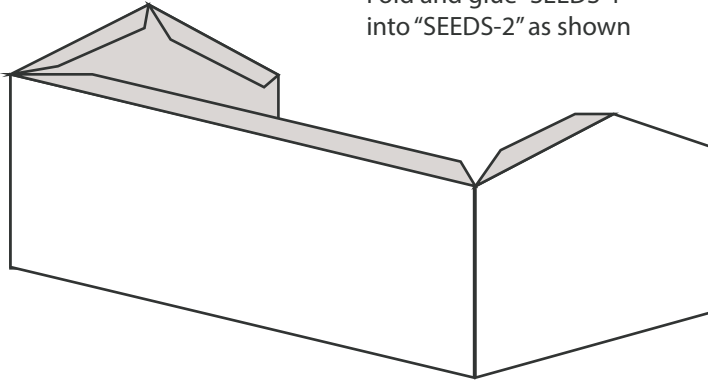
FOLD ON DOTTED LINE AND CLOSE THE "BOX"



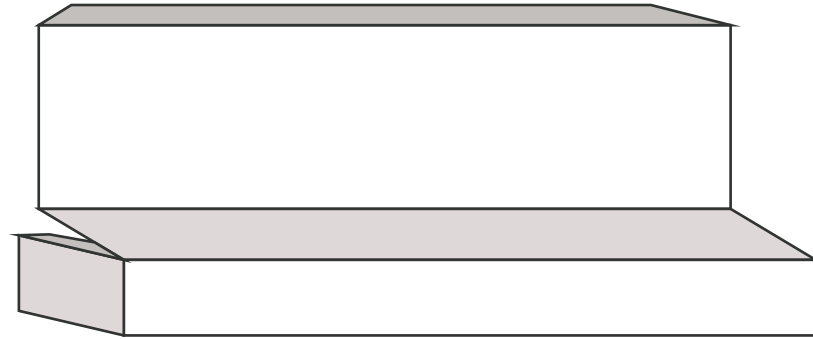
Glue "BARN ROOF" on place as shown



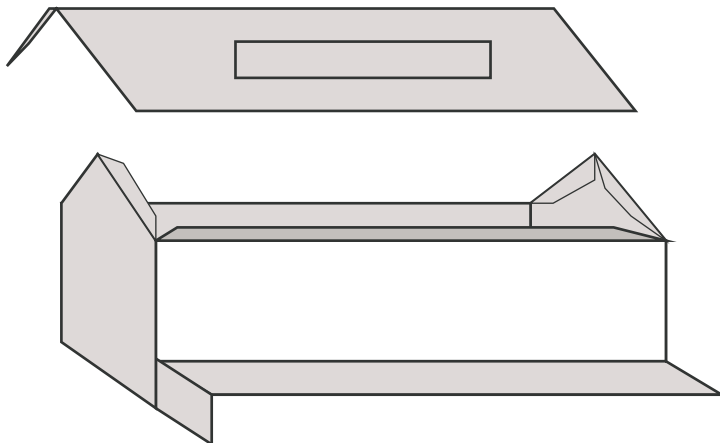
Fold and glue "SEEDS-1"
into "SEEDS-2" as shown



Fold "SEEDS-3" as shown. Glue the small flaps on the sides
under the "deck"



Glue "SEEDS-3" to the back part of the module (SEEDS-1+2)
fold and glue the "seeds roof" on place as shown.
Glue the sign on the roof.



Glue the "SEEDS" module into the "BARN" module, as shown.
Cut and glue on place the "sacs" on the deck, as shown

