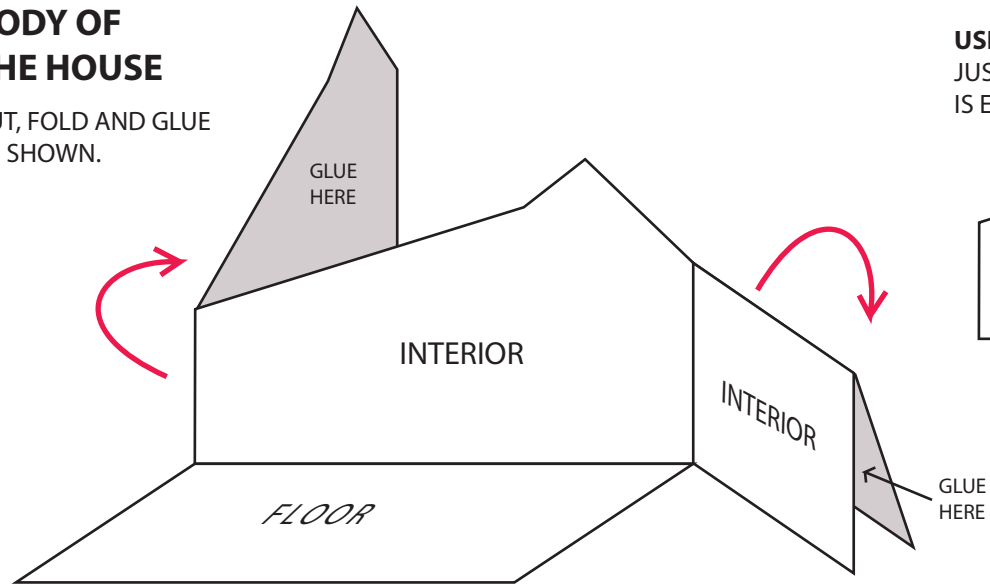


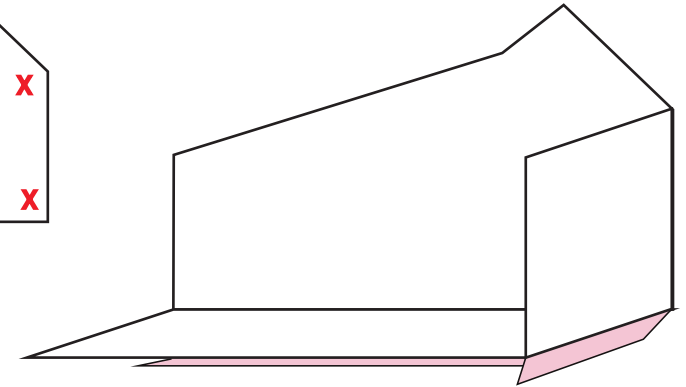
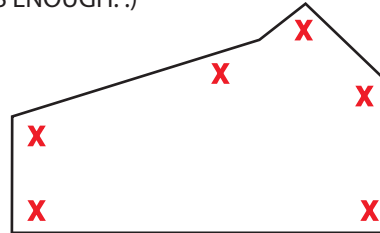
PRINT OUT IN ORDINARY PAPER! (CARDSTOCK WILL BE TOO THICK FOR SMUCH A SMALL SCALE MODEL)

BODY OF THE HOUSE

CUT, FOLD AND GLUE AS SHOWN.



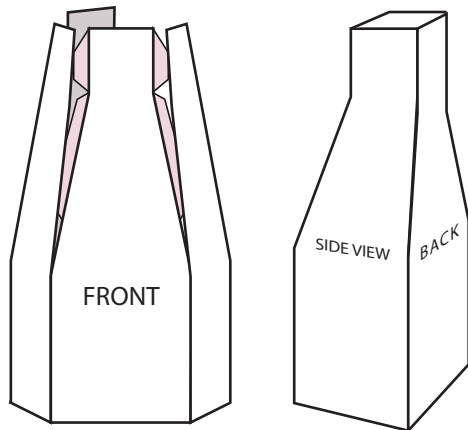
USE VERY LITTLE GLUE ON THIS MODEL!
JUST A TINY DROP WHERE MARK WITH "X"
IS ENOUGH. :)



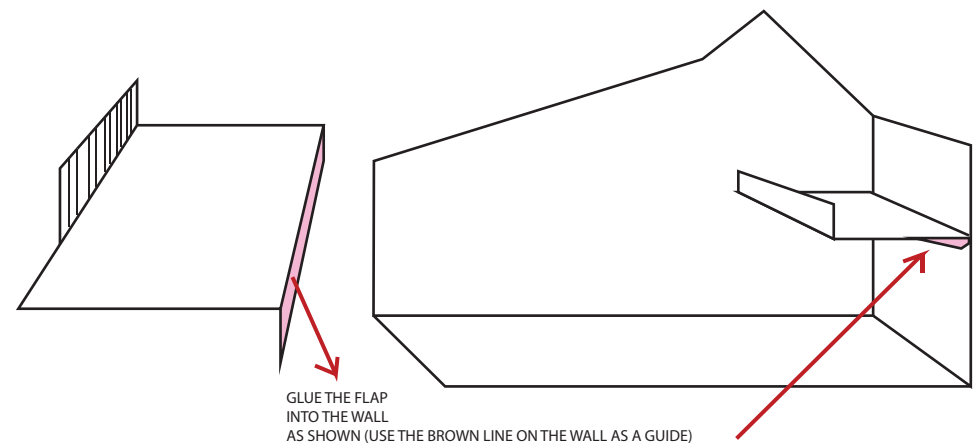
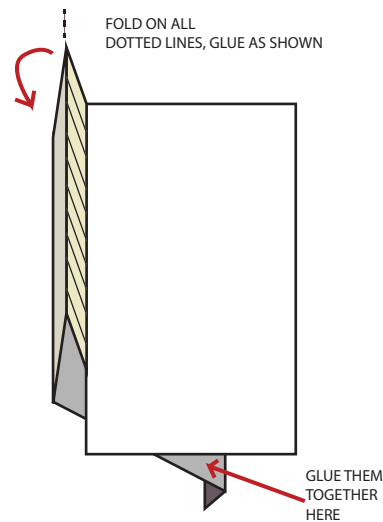
FOLD AND GLUE THE PINK FLAPS UNDER THE LITTLE HOUSE

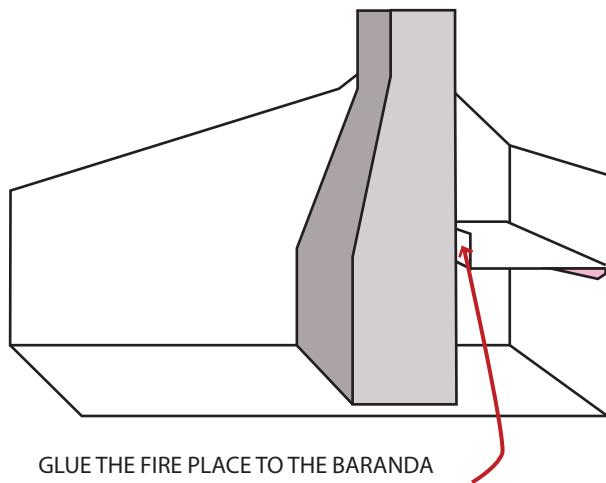
FIREPLACE

CUT, FOLD AND GLUE FLAPS AS SHOWN.
(THE BACK OF THE FIREPLACE IS FLAT, THE FRONT AND THE SIDES
ARE LIGHTLY BENT)



SECOND FLOOR

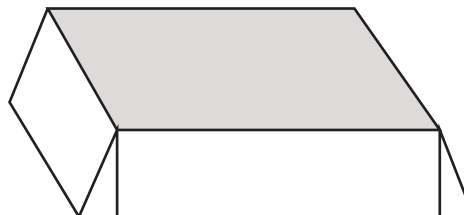




GLUE THE FIRE PLACE TO THE BARANDA
WITH TWO **TINY DROPS** OF GLUE

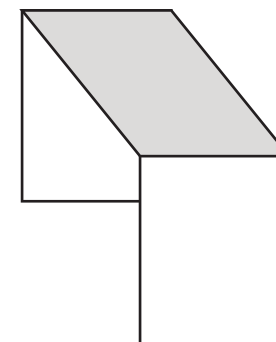
ALL THREE BEDS

CUT AND FOLD ON DOTTED LINES
AS SHOWN



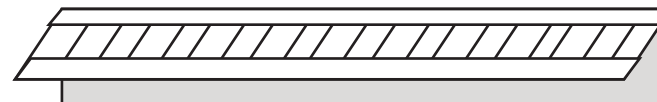
BOTH TABLES

CUT AND FOLD ON DOTTED LINES
AS SHOWN



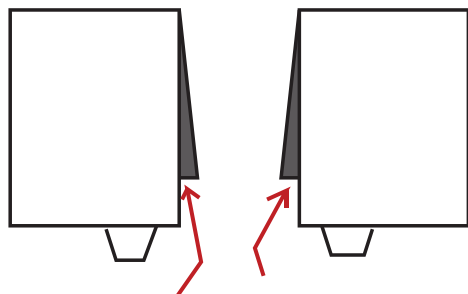
LADDER

FOLD ON DOTTED LINE
AND GLUE TOGETHER
AS SHOWN



CHARLES & CAROLINE

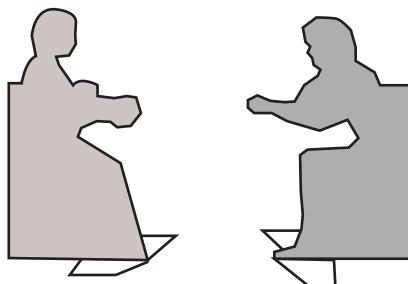
CUT THE RECTANGEL AND FLAPS AS SHOWN,
FOLD ON THE MIDDLE AND GLUE TOGETHER



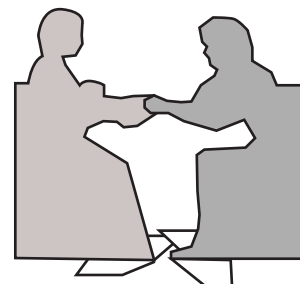
GLUE TOGETHER
HERE

GLUE TOGETHER
HERE

CUT OUT THE VERY SMALL FIGURES WITH A
HOBBY KNIFE OR A VERY SMALL SCISSORS. :)
FOLD THE FLAP OUTWARDS AS SHOWN.



GLUE CHARLES' HANDS TO CAROLINE'S
AS SHOWN .
(IT IS A ROMANTIC SCENE!) :) :



INSERT THE BIG TABLE
BETWEEN THEM
AS SHOWN.

