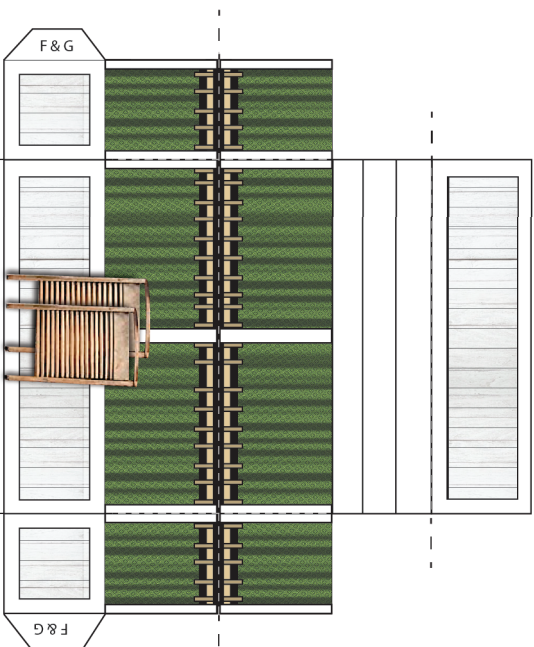
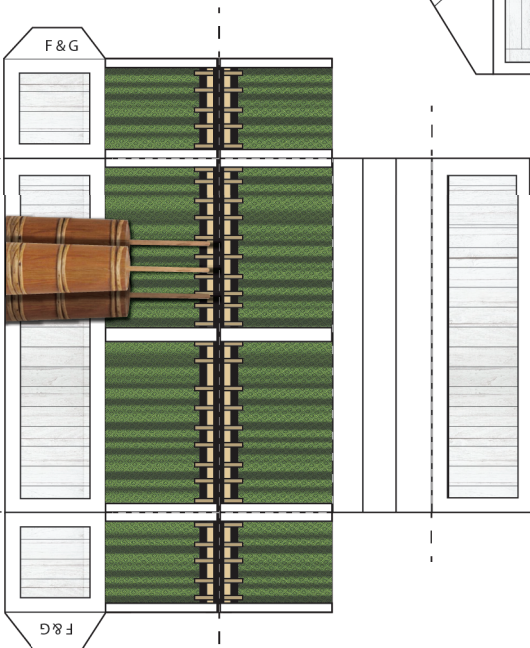
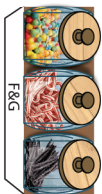
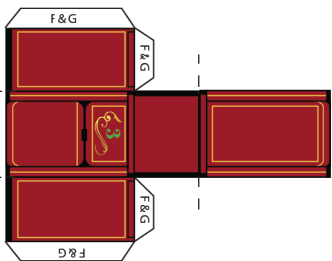
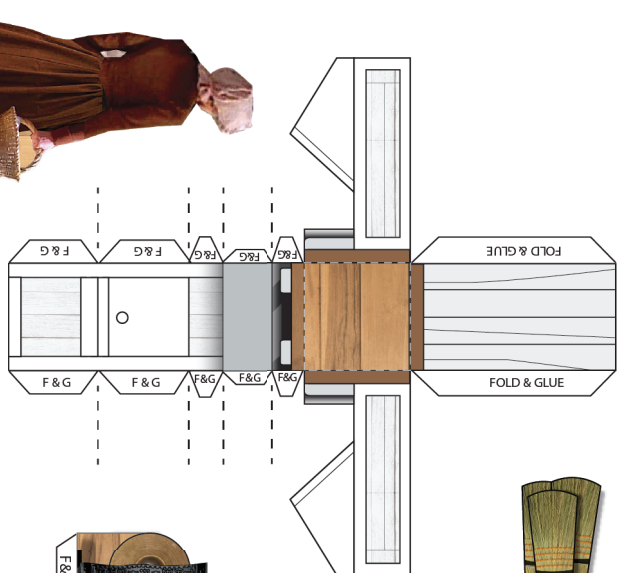


PRINT PAGE 1 (SHOPPE) ON CARDSTOCK,
AND PAGE 2 ON ORDINARY PAPER

OLESON'S MERCANTILE INTERIOR
MINIATURE PAPER MODEL



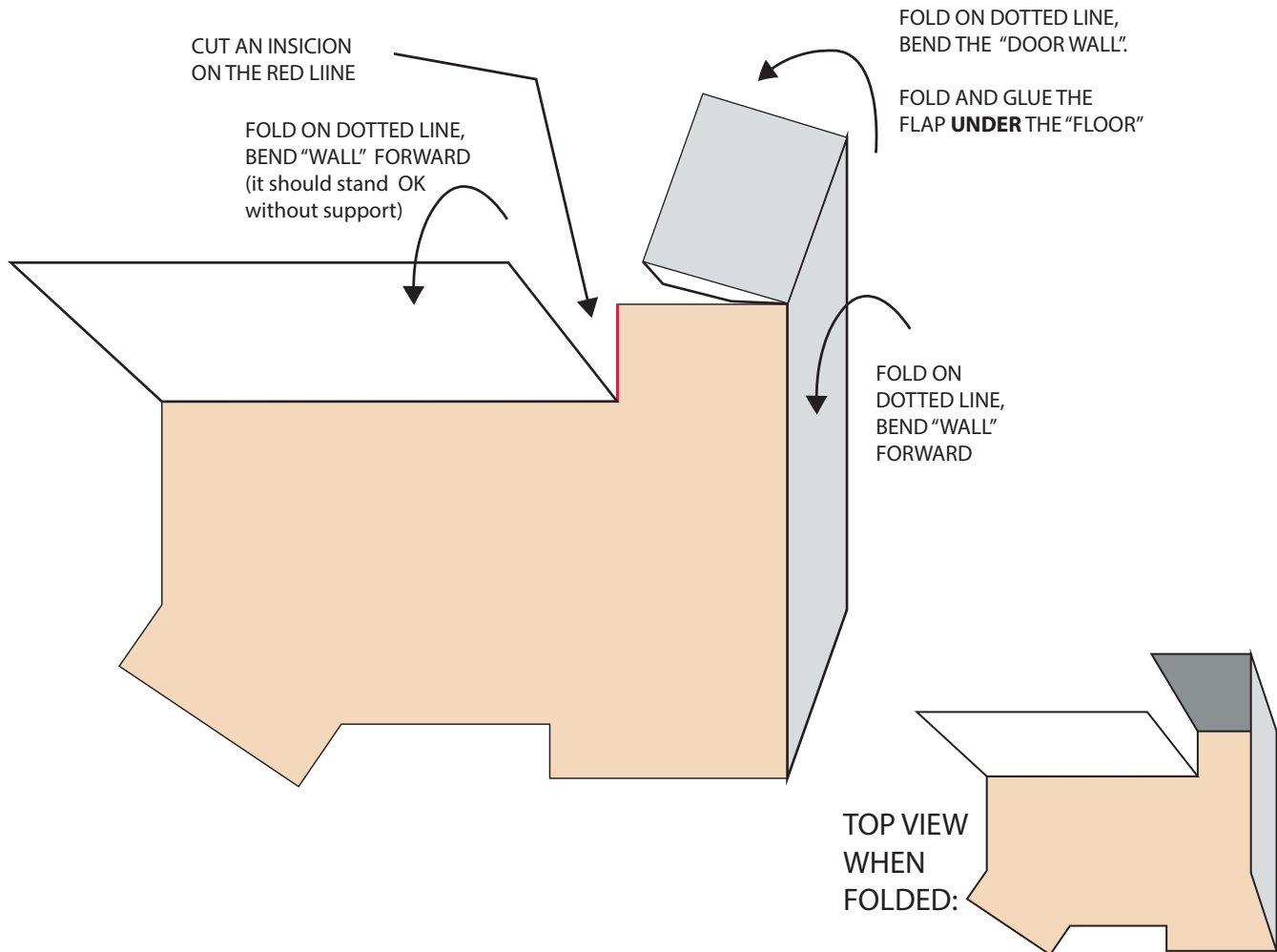
PRINT ON ORDINARY PAPER



PRINT PAGE 1 (SHOPPE) ON CARDSTOCK, AND PAGE 2 ON ORDINARY PAPER

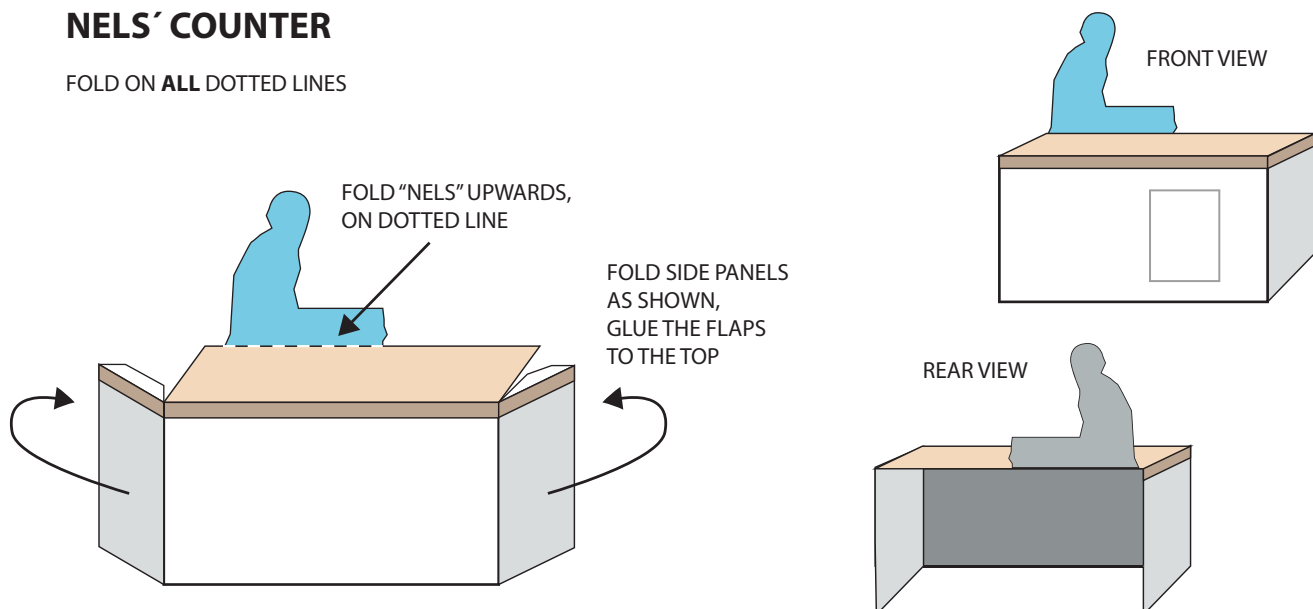
THE SHOPPE

FOLD ON **ALL** DOTTED LINES



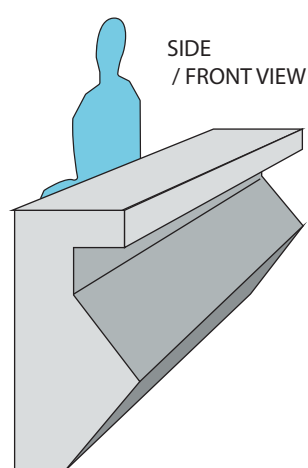
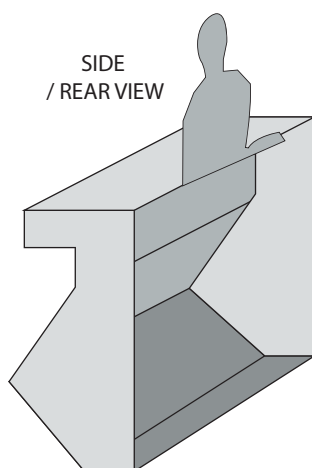
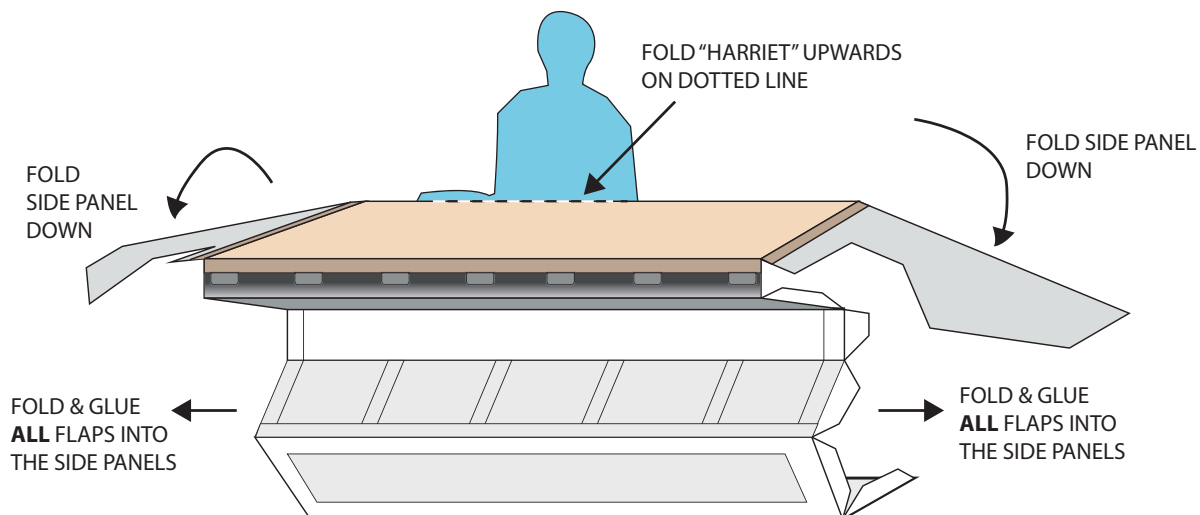
NELS' COUNTER

FOLD ON **ALL** DOTTED LINES



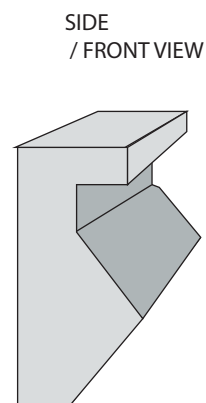
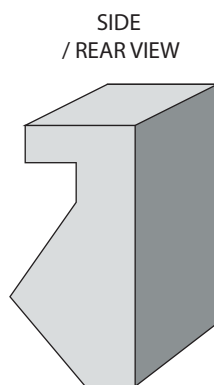
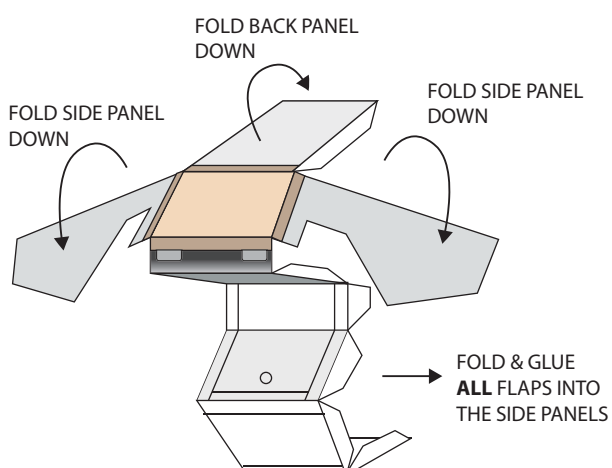
HARRIET'S COUNTER

FOLD ON **ALL** DOTTED LINES



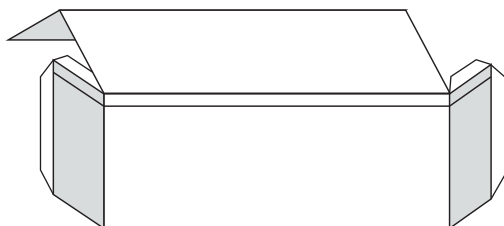
CORNER (SMALL) COUNTER

FOLD ON **ALL** DOTTED LINES



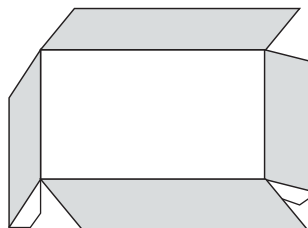
LONG, CENTER TABLE

FOLD ON **ALL** DOTTED LINES
FOLD AS SHOWN, AND FOLD & GLUE THE FLAPS
TO THE SIDES & TOP



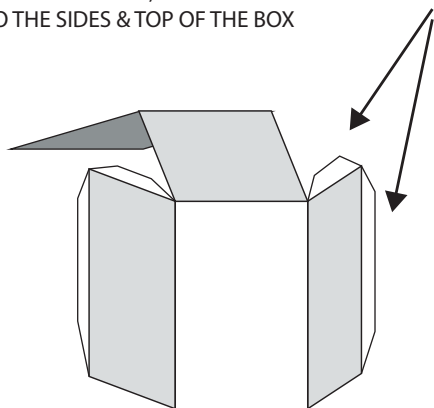
BOTH QUILT and FABRIC STOCK

FOLD ON **ALL** DOTTED LINES
FOLD AS SHOWN, AND FOLD & GLUE THE FLAPS
TO THE SIDES & TOP



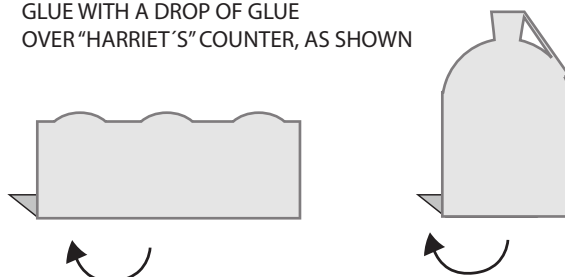
RED BOX

FOLD ON **ALL** DOTTED LINES
FOLD AS SHOWN, AND FOLD & GLUE THE FLAPS
TO THE SIDES & TOP OF THE BOX



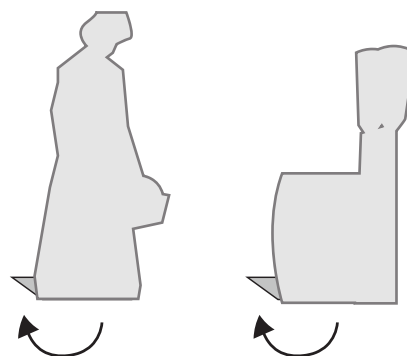
CANDY BOWLS & PAPER ROLL

FOLD ON DOTTED LINE
GLUE WITH A DROP OF GLUE
OVER "HARRIET'S" COUNTER, AS SHOWN



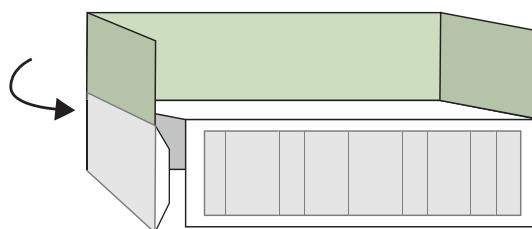
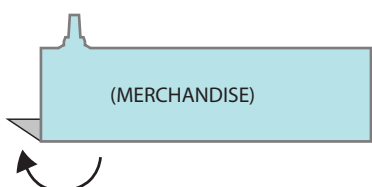
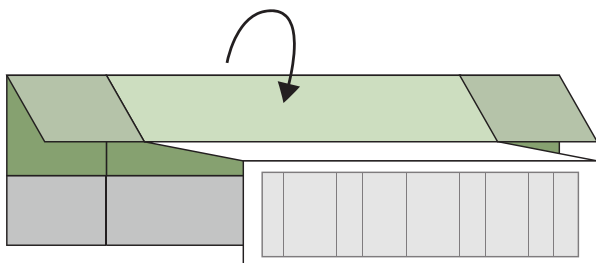
"CAROLINE" and BARREL+ BROOMS

FOLD ON DOTTED LINE.
THESE SHOULD
STAND BY ITSELF



WINDOW DISPLAYS

FOLD ON **ALL** DOTTED LINES
FOLD AS SHOWN, AND FOLD & GLUE THE FLAPS
TO THE SIDES



VIEW
WHEN
FINISHED:

