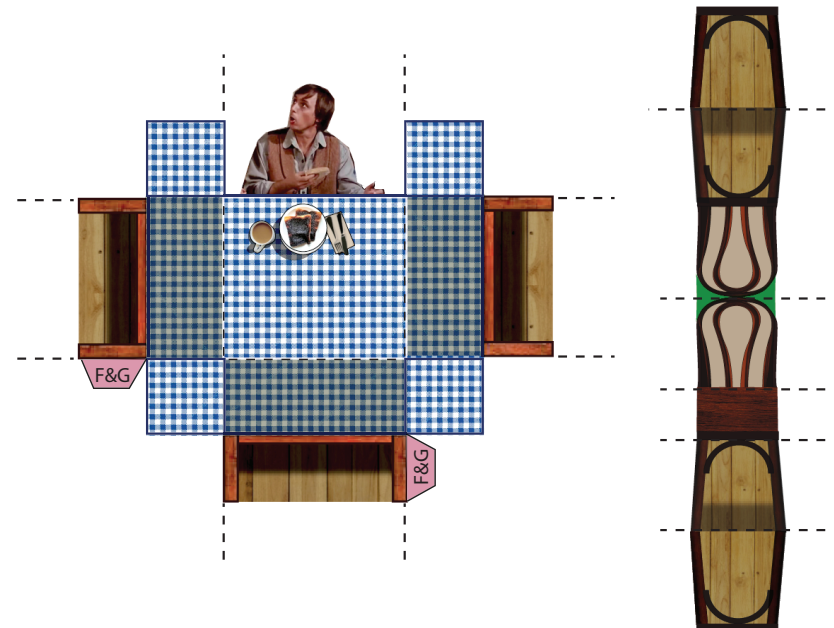
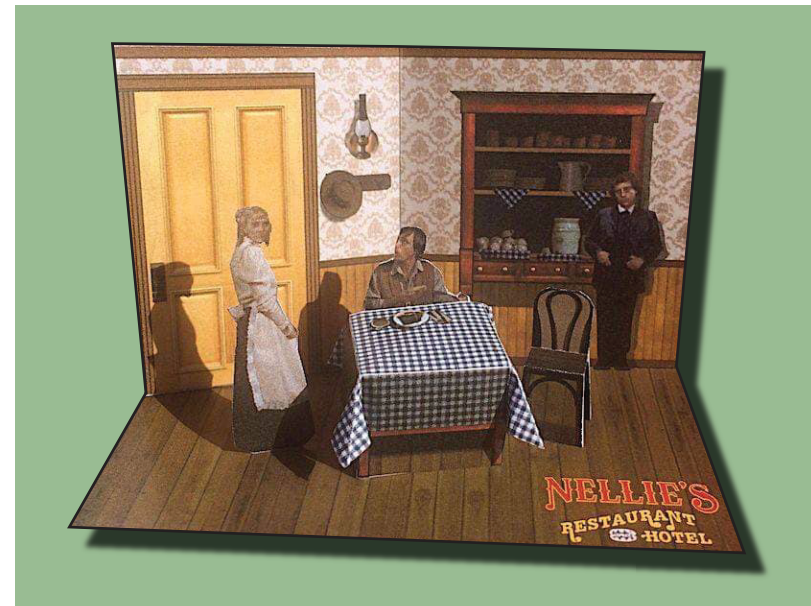


# "DINNER AT NELLIE'S"

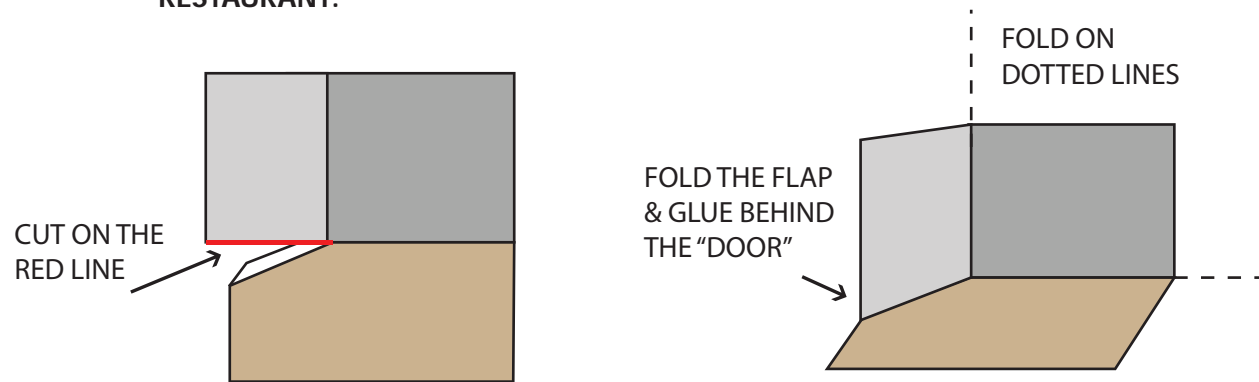
## MINIATURE PAPER MODEL

Print the *restaurant* on cardstock (thicker paper)  
and *Nellie*, the *table* and *chair* in ordinary paper

You can also print all in ordinary paper, but glue (with glue stick)  
the "restaurant" to thick paper, **before** cutting and folding.



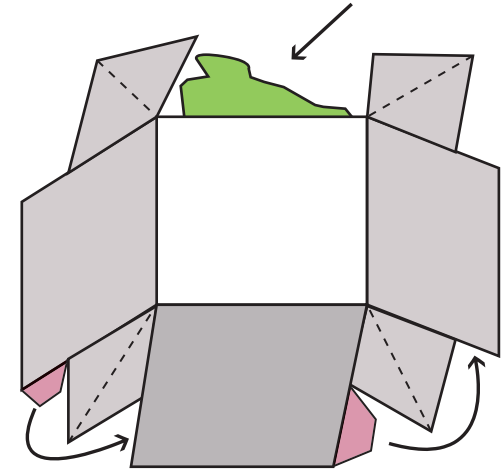
## RESTAURANT:



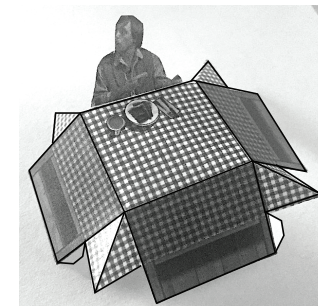
## TABLE:

FOLD THE SIDES OF THE TABLE AS SHOWN

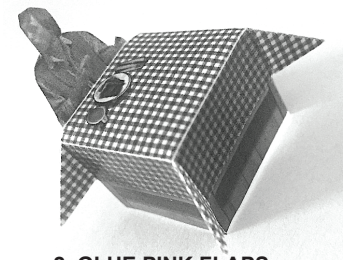
FOLD THE "CUSTOMER" UPWARDS



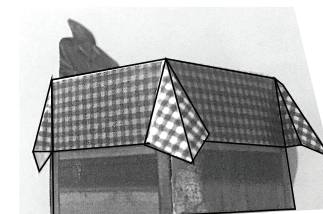
GLUE THE PINK FLAPS (TO CLOSE THE FORM)



1. FOLD

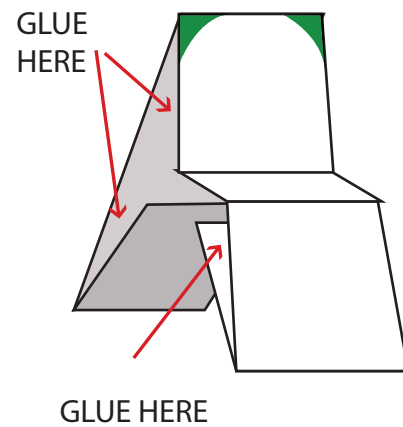


2. GLUE PINK FLAPS

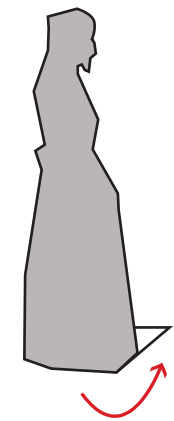
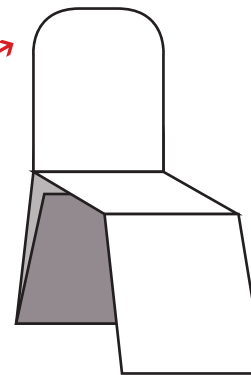


3. FOLD TABLECLOTH CORNERS AS SHOWN

## CHAIR: FOLD ON DOTTED LINES AS SHOWN



AFTER FOLDING AND PASTING, CUT OUT THE GREEN AREA



FOLD THE SMALL FLAP & GLUE THE FIGURE TO THE FLOOR AS SHOWN