

SIERRA RAILWAY NUM. 3 (TRAIN)

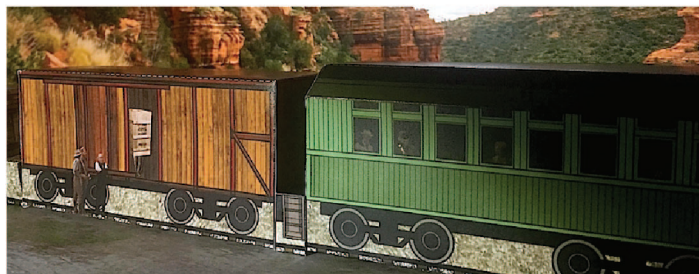
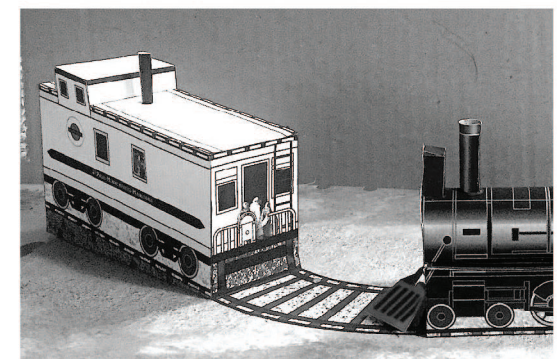
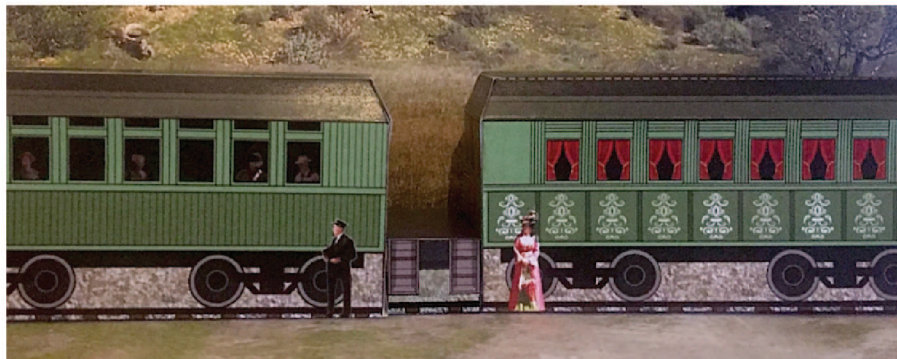
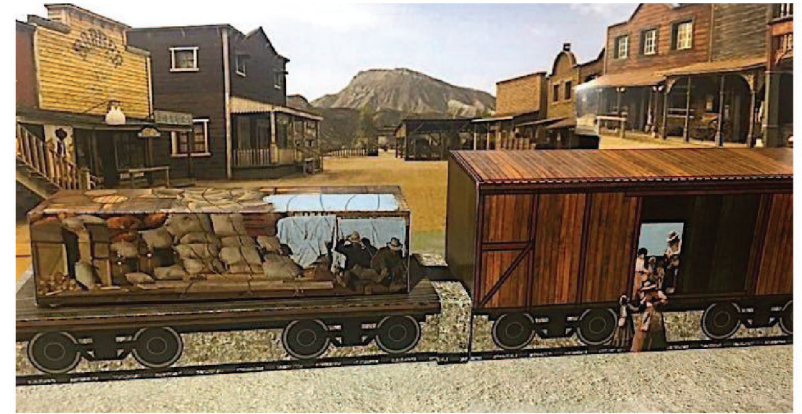
USED ON LITTLE HOUSE ON THE PRAIRIE TV EPISODES
MINIATURE PAPER MODEL

Many different episodes are featured on this miniature model. Just print and assemble your favorite wagon, or take a good cup of coffee (or several!) and make them all!

Print in ordinary paper (do not use cardstock, it will be difficult to fold)

Background images are not included on this file.

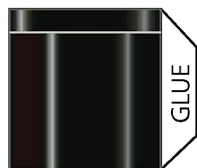
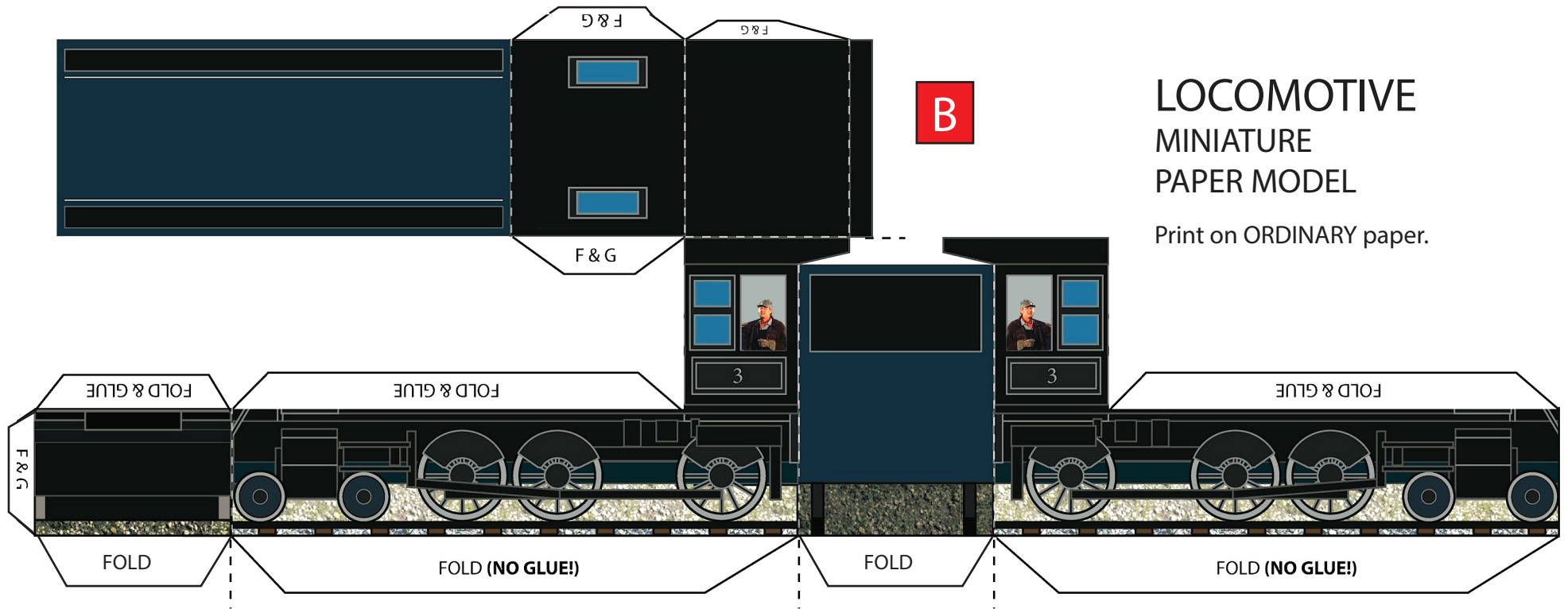
www.paperprairie.art.blog



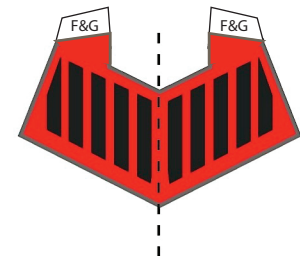
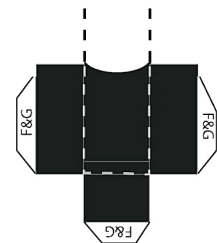
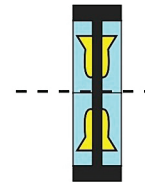
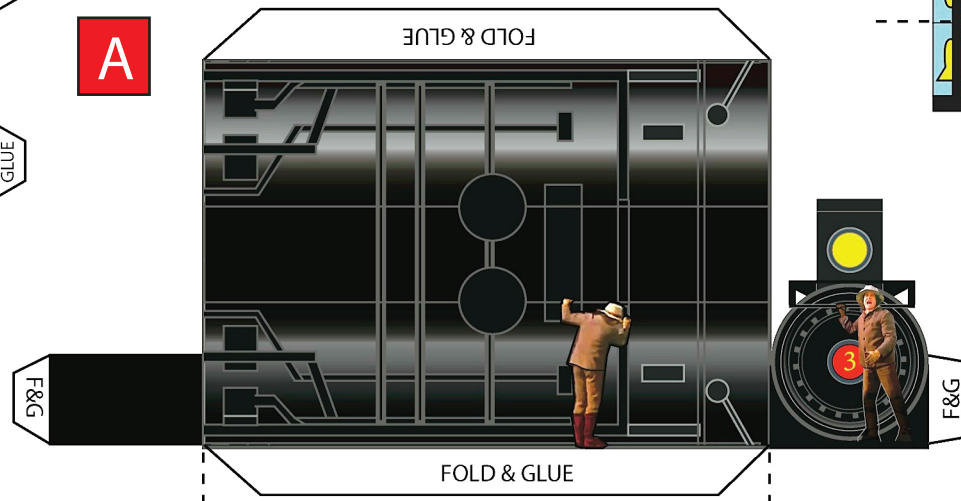
B

LOCOMOTIVE MINIATURE PAPER MODEL

Print on ORDINARY paper.

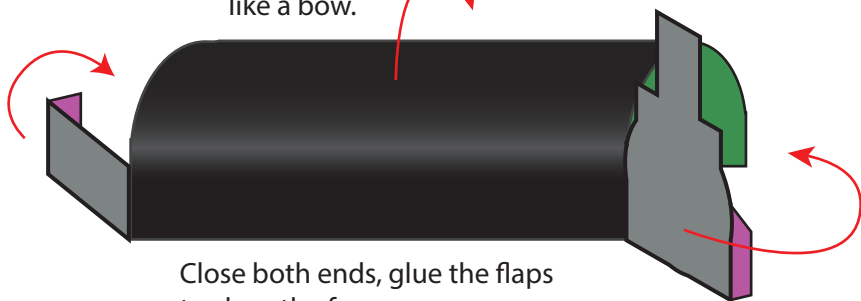


A

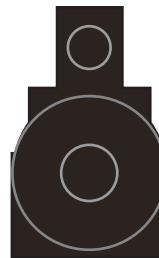


A

Carefully,
fold the paper
like a bow.



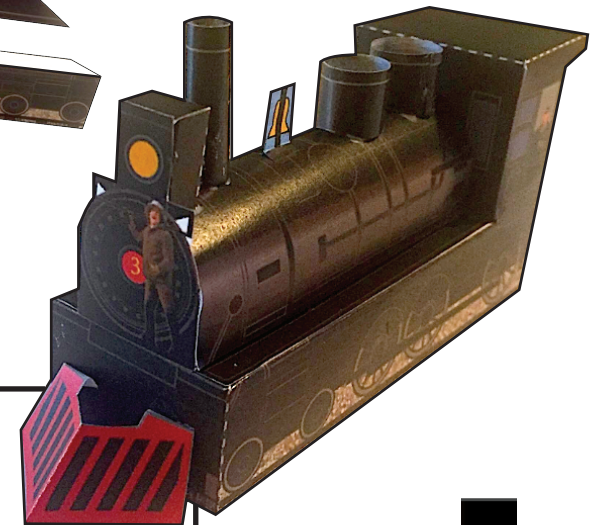
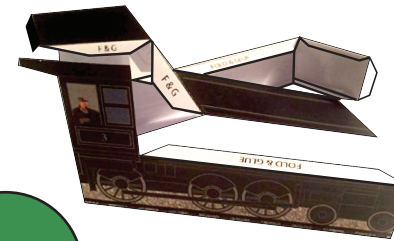
Close both ends, glue the flaps
to close the form.



FRONT VIEW

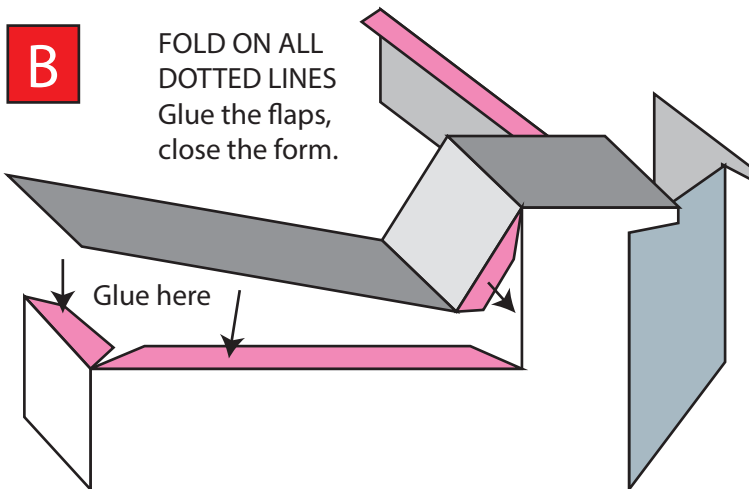


BACK VIEW



B

FOLD ON ALL
DOTTED LINES
Glue the flaps,
close the form.

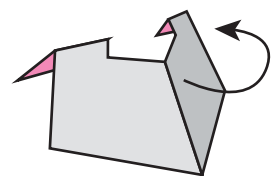


GLUE A OVER B (in the middle)
AS SHOWN

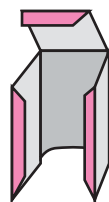


Help
yourself
with a
pencil, to
shape the
cylinders.

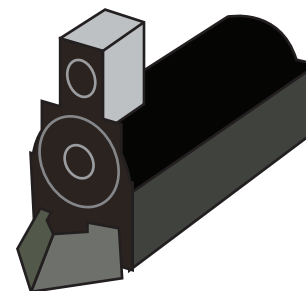
ROLL & GLUE
the cilindres as
shown,
glue on place
(see photo)



FOLD ON
DOTTED LINE
Glue the flaps to
the front of the locomotive,
as shown on the photo.



FOLD ON
DOTTED LINES.
Glue the box
behind the train
"lamp" as shown.



FOLD ON DOTTED
LINE, bend the black
flpas and glue the
bell over the locomo-
tive, see the photo.

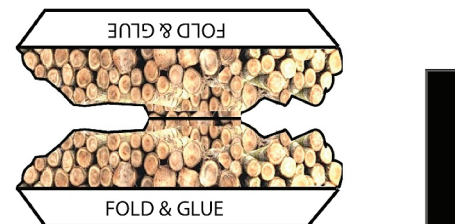


WAGON WITH WOOD

MINIATURE PAPER MODEL

Print on ORDINARY paper.

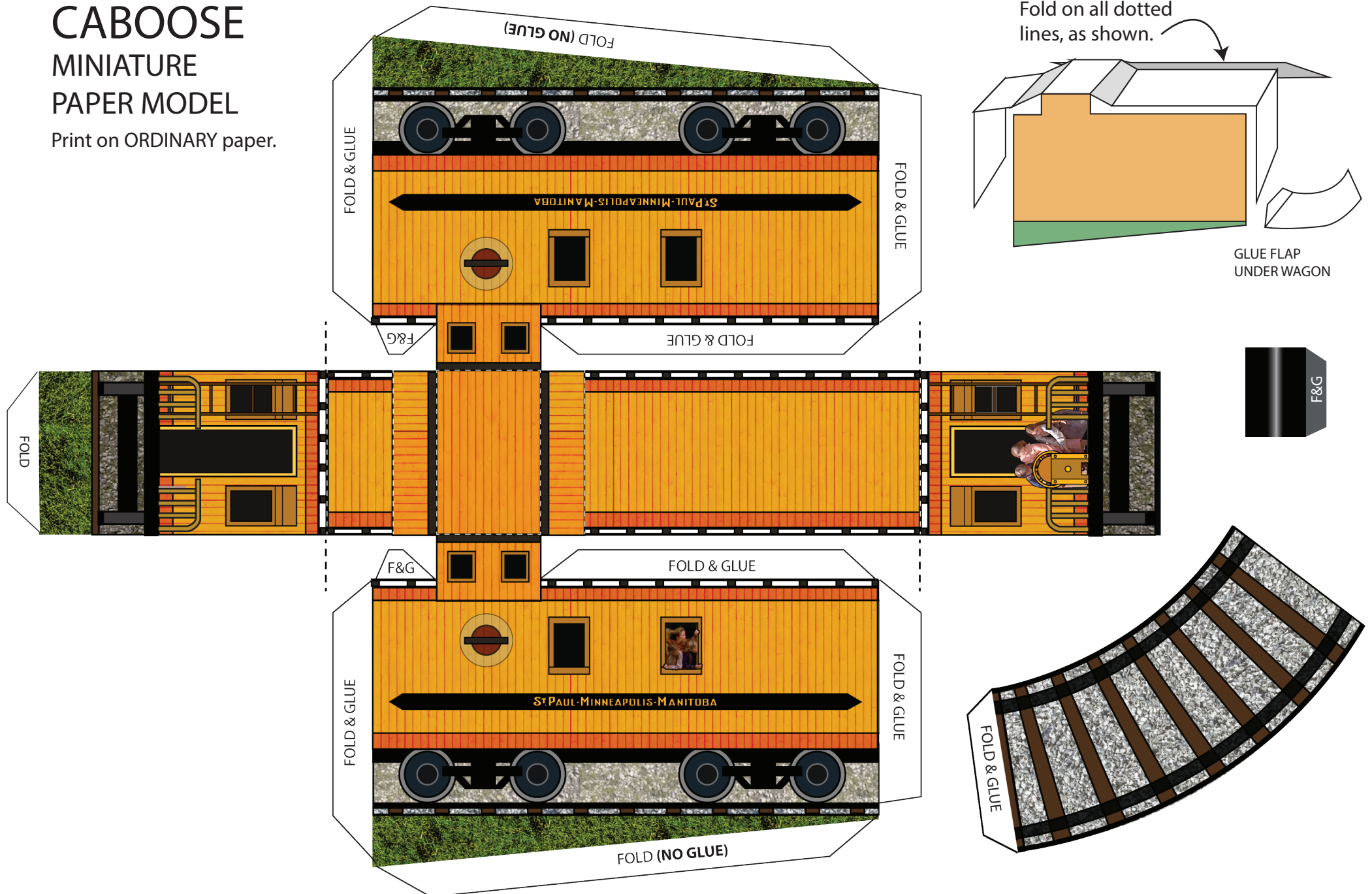
Fold on dotted lines,
as shown



CABOOSE

MINIATURE PAPER MODEL

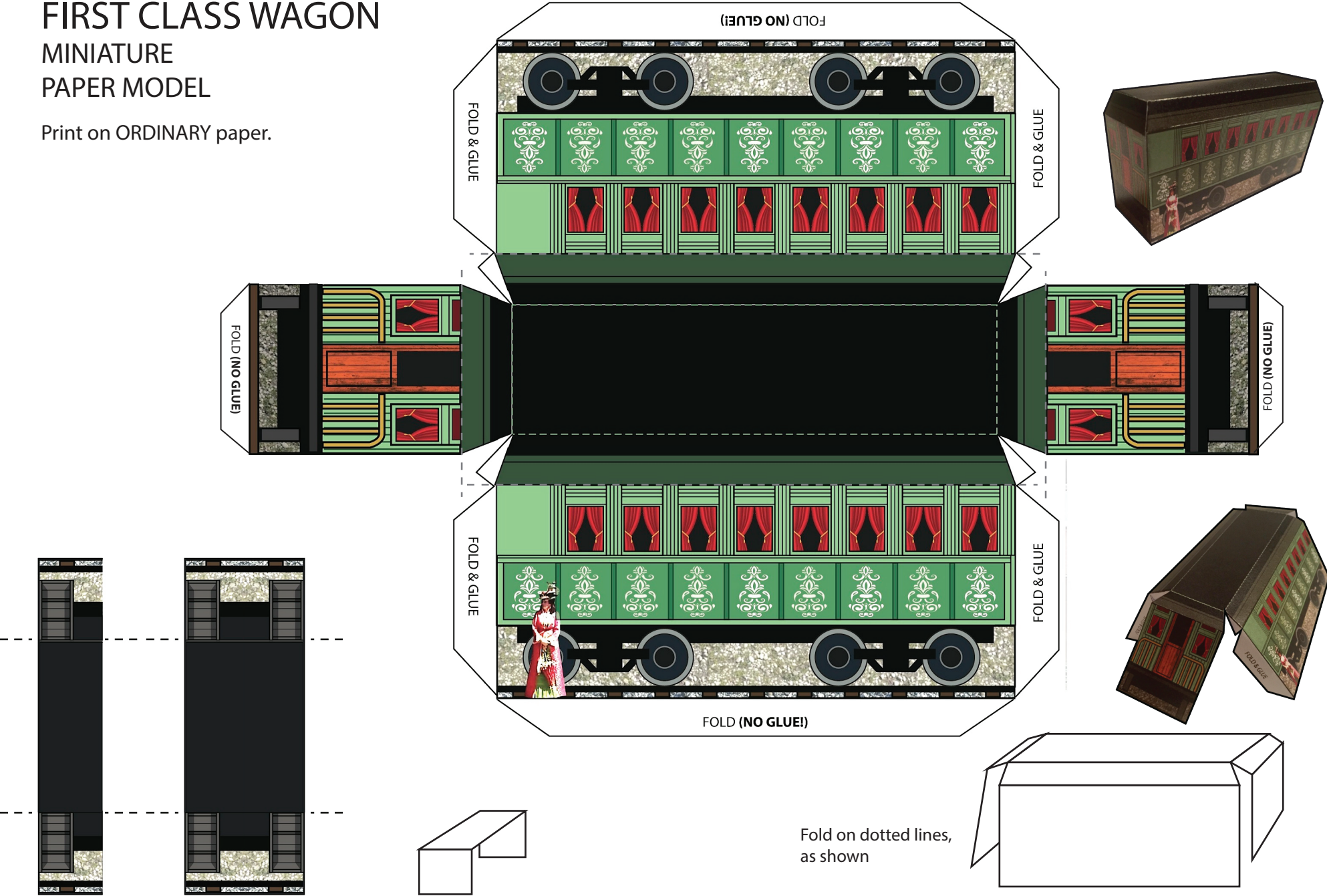
Print on ORDINARY paper.



FIRST CLASS WAGON

MINIATURE PAPER MODEL

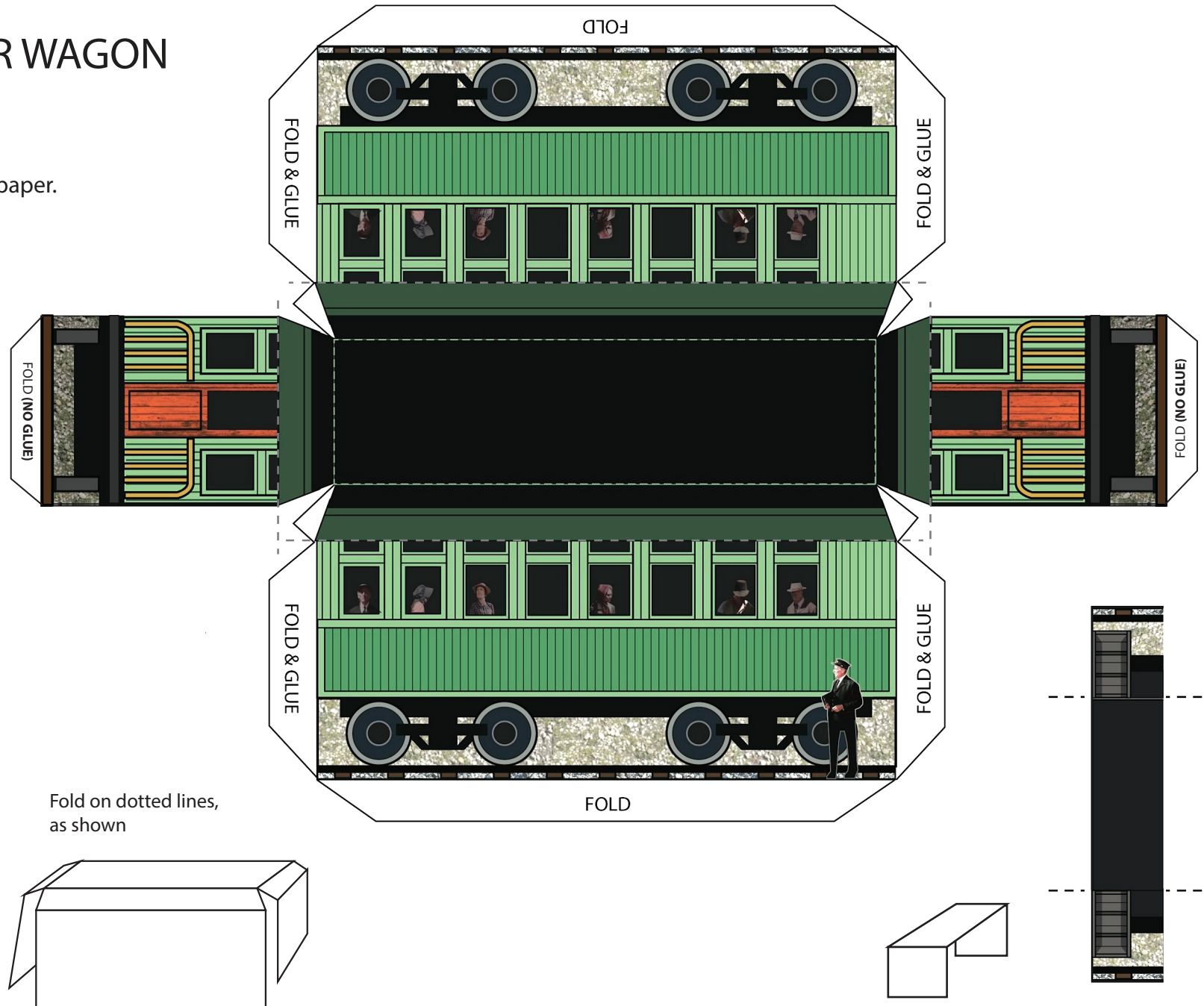
Print on ORDINARY paper.



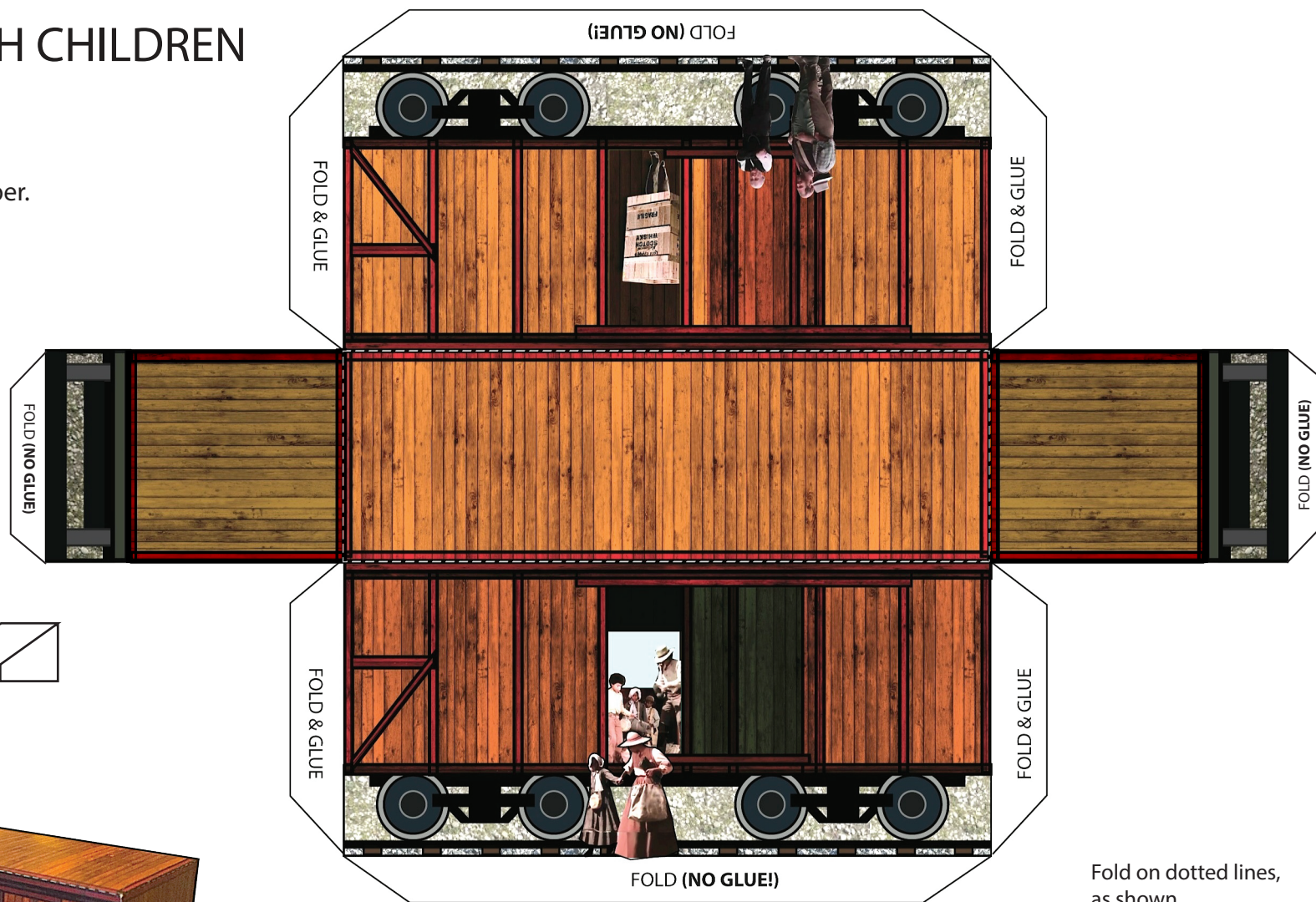
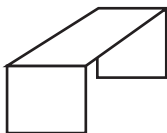
PASSENGER WAGON

MINIATURE PAPER MODEL

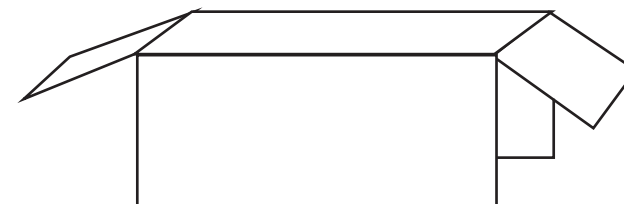
Print on ORDINARY paper.



Print on ORDINARY paper.



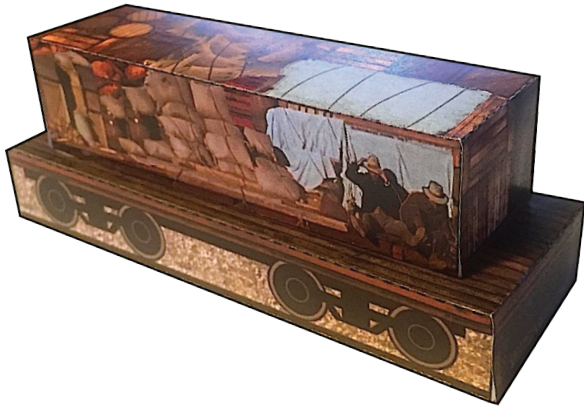
Fold on dotted lines,
as shown



WAGON WITH GOODS

MINIATURE PAPER MODEL

Print on ORDINARY paper.



Fold on dotted lines,
as shown

