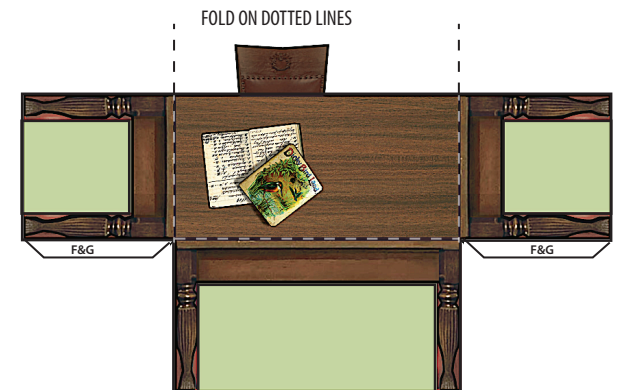


Walnut Grove SCHOOL INTERIOR

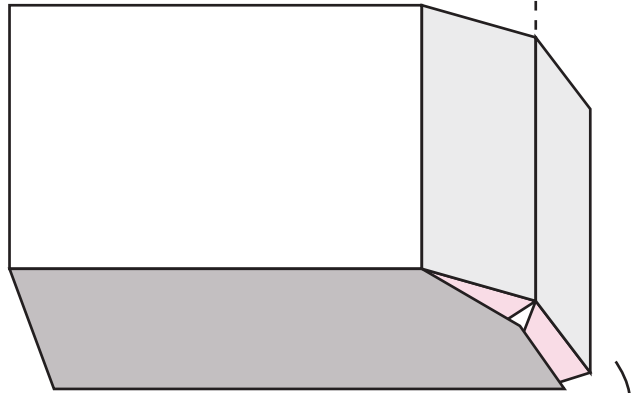
Miniature paper model

PRINT ON ORDINARY PAPER



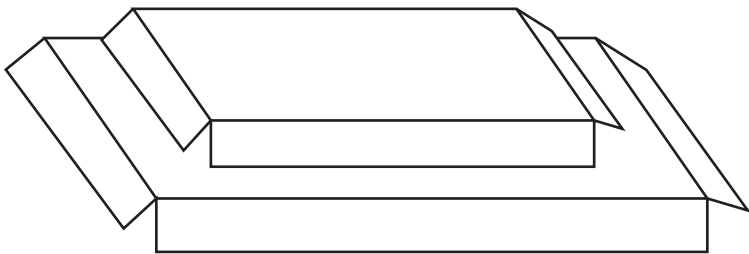
www.paperprairie.art.blog

SCHOOL



FOLD & GLUE THE FLAPS UNDER THE "FLOOR"
GLUE THE SCHOOL(FLOOR) TO A CARDBOARD (WITH GLUE STICK)

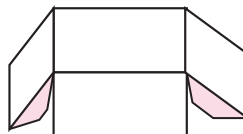
PLATFORMS



FOLD & GLUE THE FLAPS TO FORM THE BOXES.
GLUE THE SMALLER BOX OVER THE BIGGER ONE,
(WITH A DROP OF GLUE ON EACH CORNER)
AS SHOWN ON PICTURE

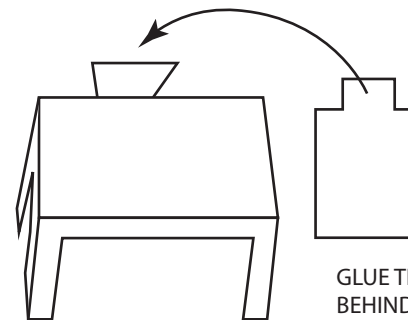
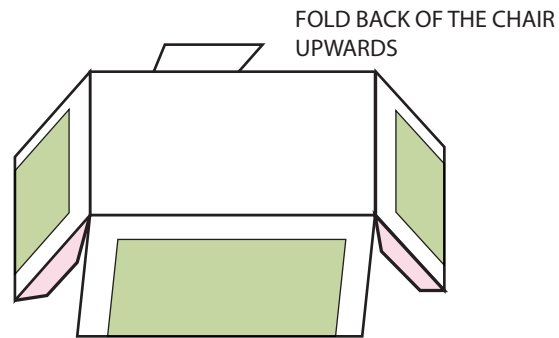
BOOKS

FOLD & GLUE
THE FLAPS
AS SHOWN



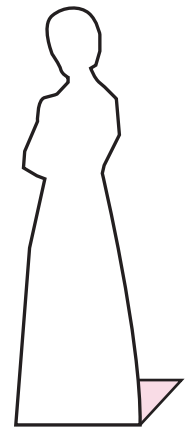
DESK

FOLD ON DOTTED LINES AS SHOWN
BEFORE FOLDING, CUT OUT THE GREEN SQUARES.
FOLD AND GLUE THE FLAPS AS SHOWN



GLUE THE THE REST OF THE CHAIR
BEHIND THE THE BACK CHAIR

TEACHERS



CUT OUT YOUR FAVORITE
(OR ALL FOUR!)
FIGURE, FOLD THE FLAP
AND GLUE IT WHEREVER
YOU WANT ON THE SCHOOL.

