

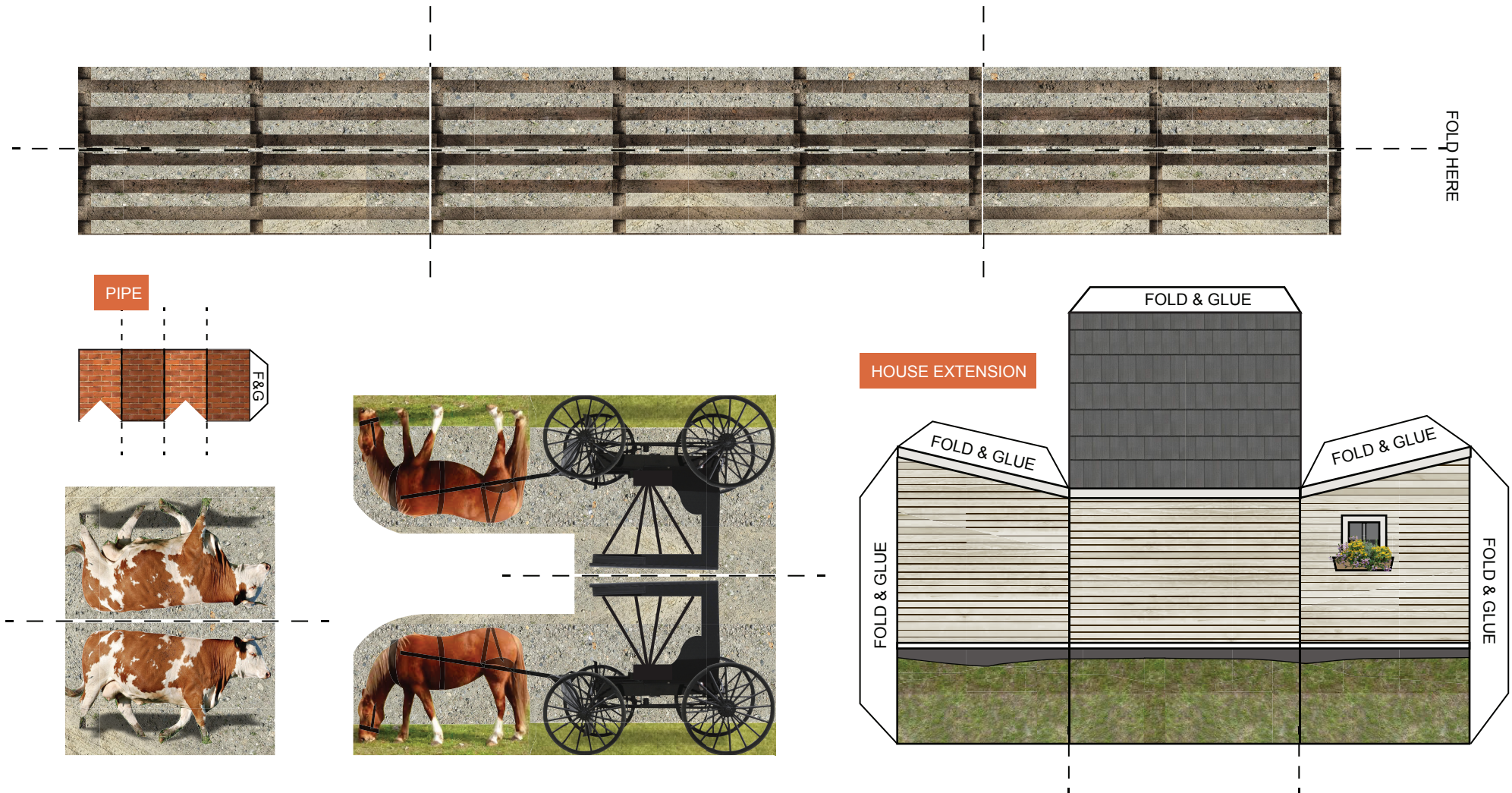
# LAURA & ALMANZO WILDER'S FARM

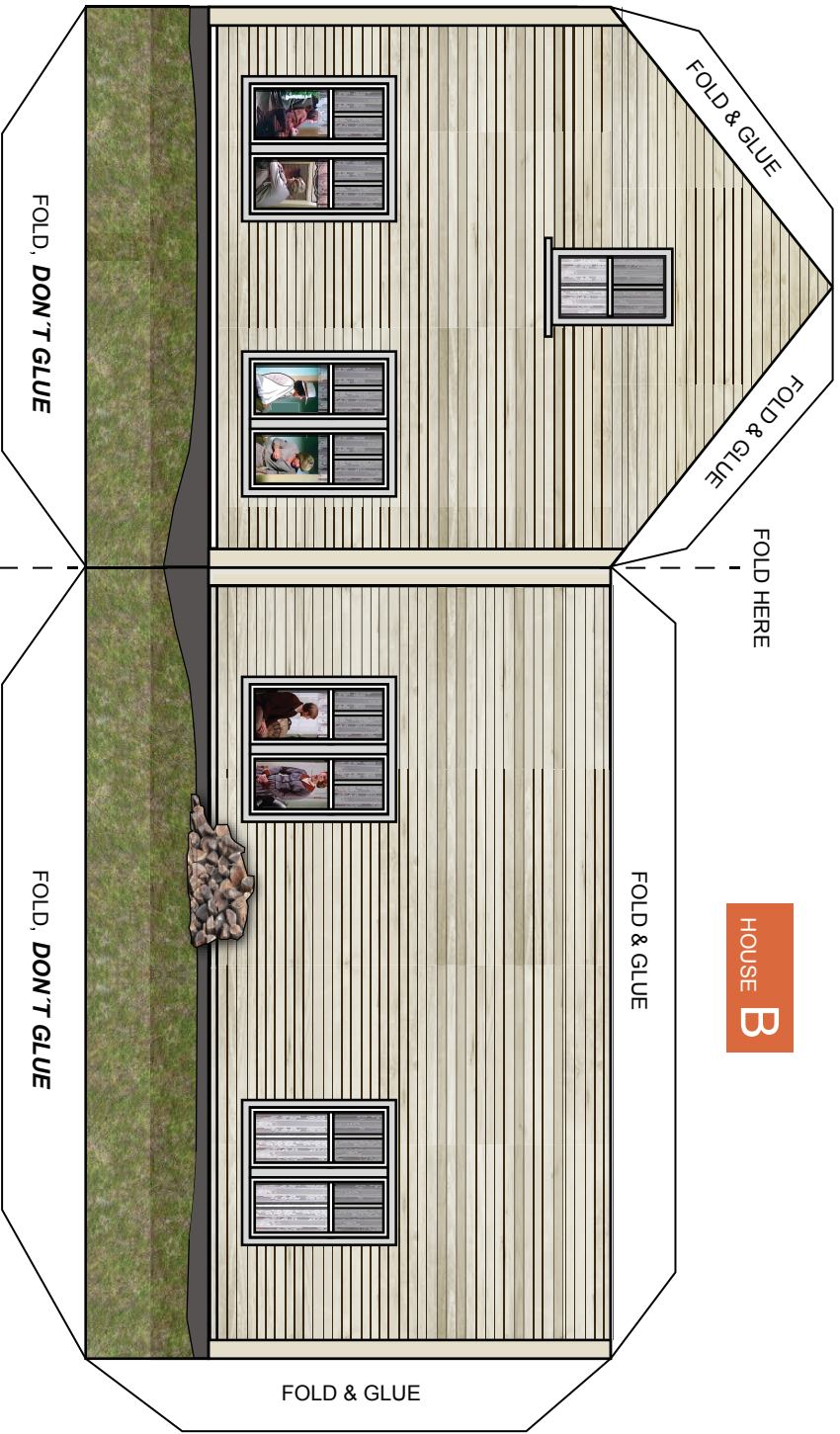
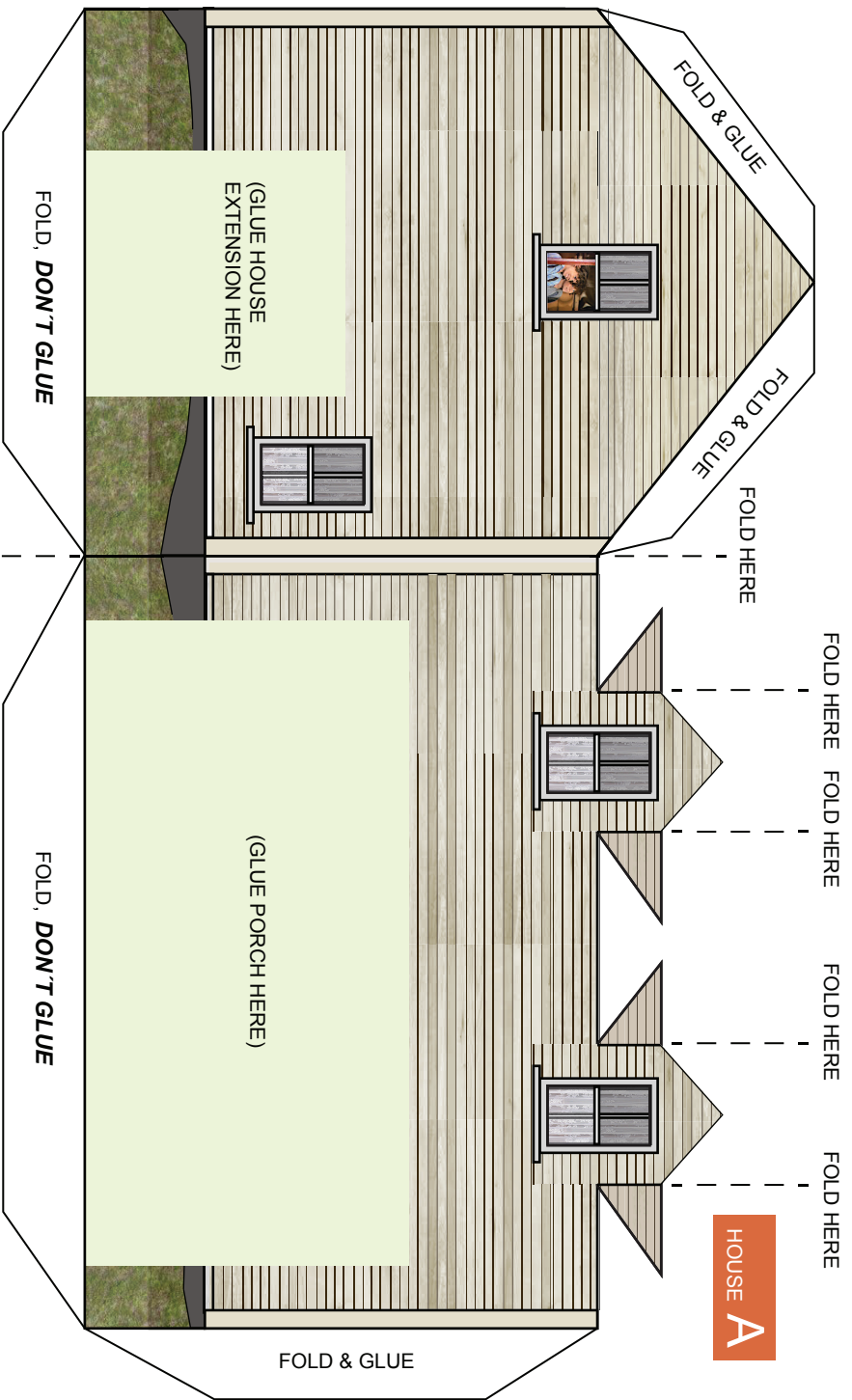
## MINIATURE PAPER MODEL

[www.paperprairie.art.blog](http://www.paperprairie.art.blog)

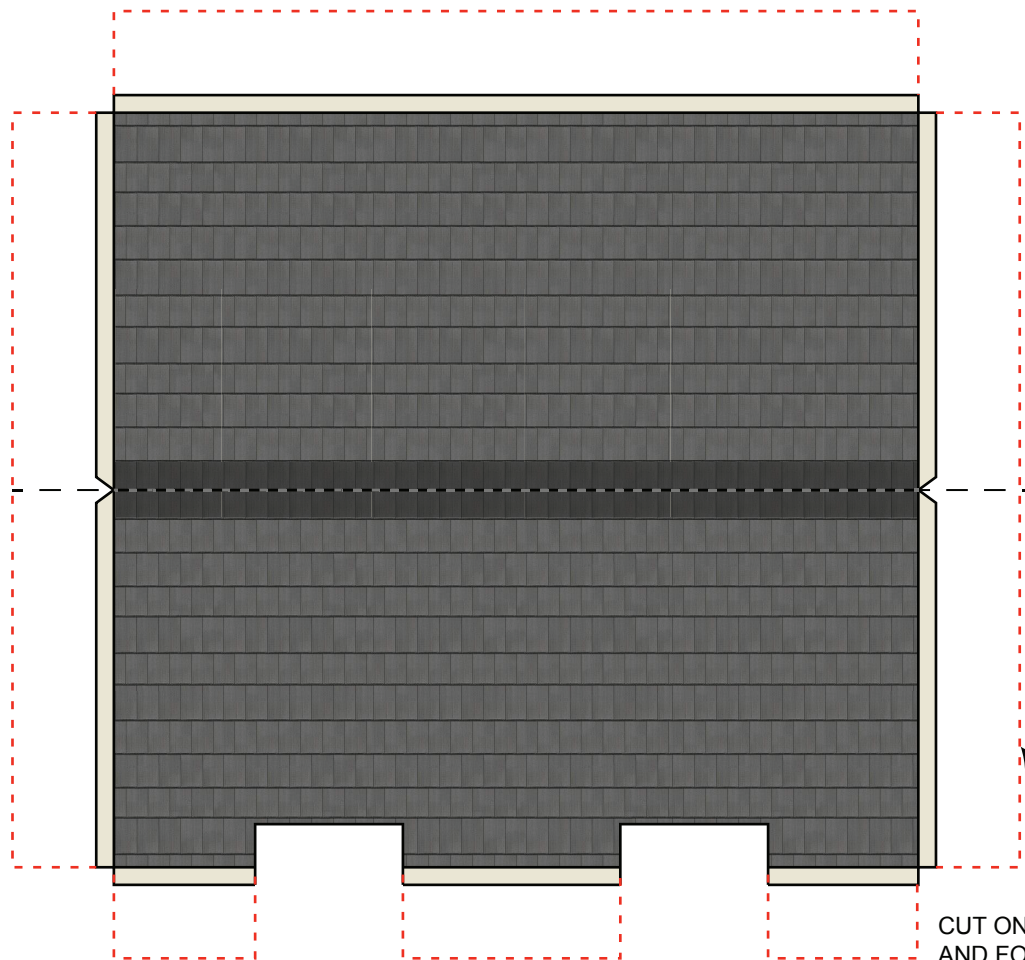
INSTRUCTIONS AT THE END

Print in ordinary paper.  
The background &  
grass / soil images should be  
glued to thin cardboard.

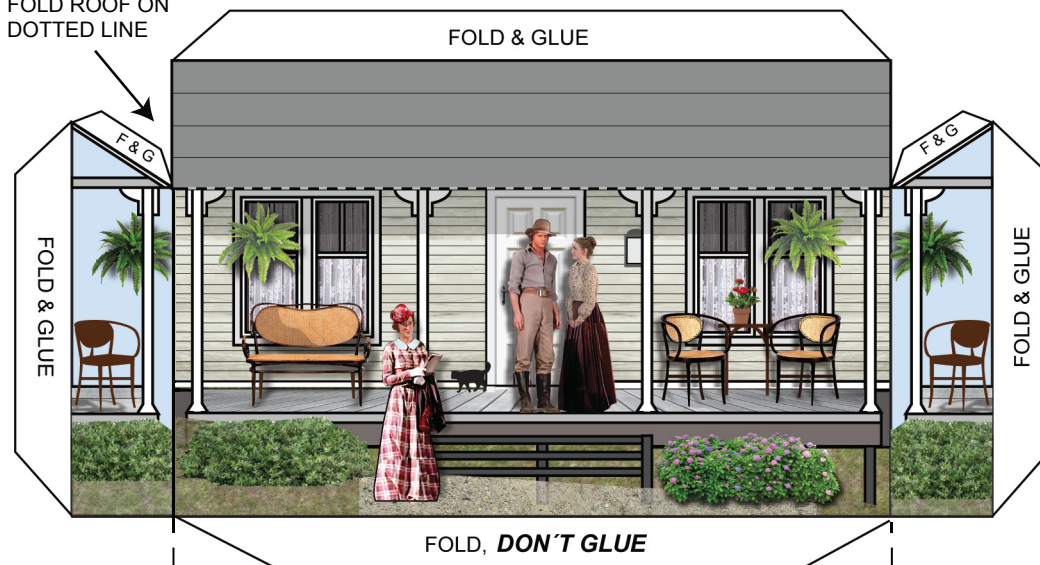








FOLD ROOF ON  
DOTTED LINE

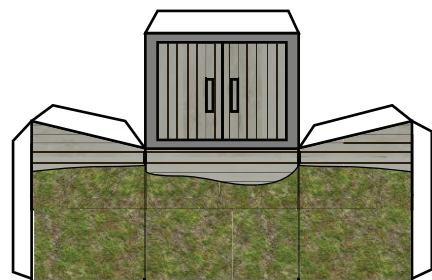


PORCH

FOLD HERE

FOLD HERE

CUT ON DOTTED RED LINES,  
AND FOLD THE WHITE BORDERS.  
(EASIER WHEN IS NOT SO THIN)  
AFTER FOLDING, CUT THE EXCESS.



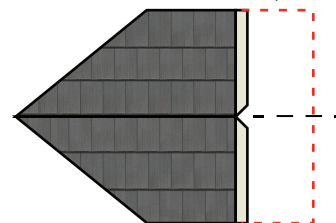
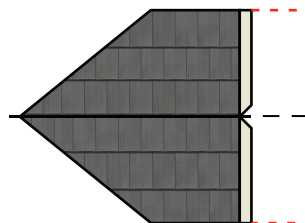
BASEMENT

FOLD HERE

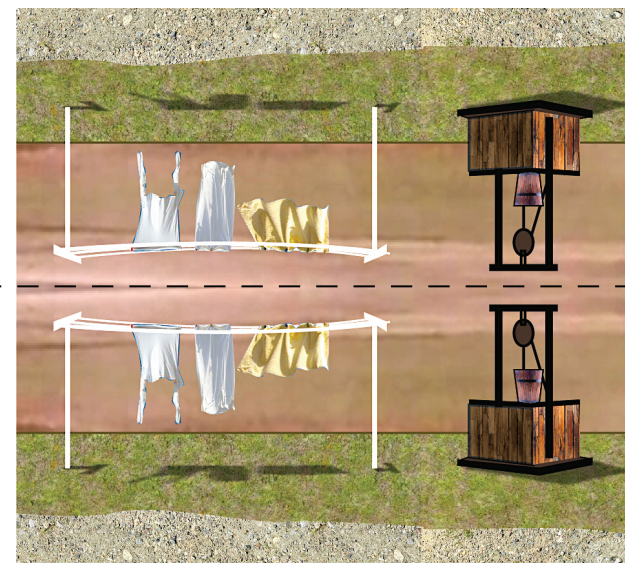
FOLD HERE

ROOF OVER WINDOWS

FOLD HERE



FOLD HERE





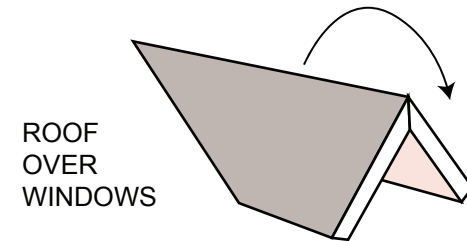
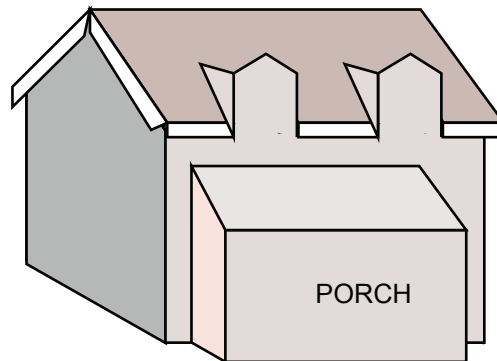
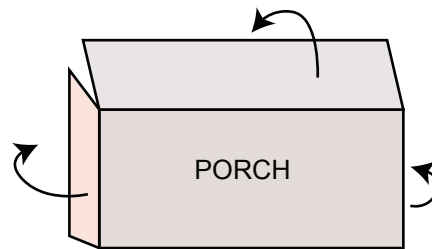
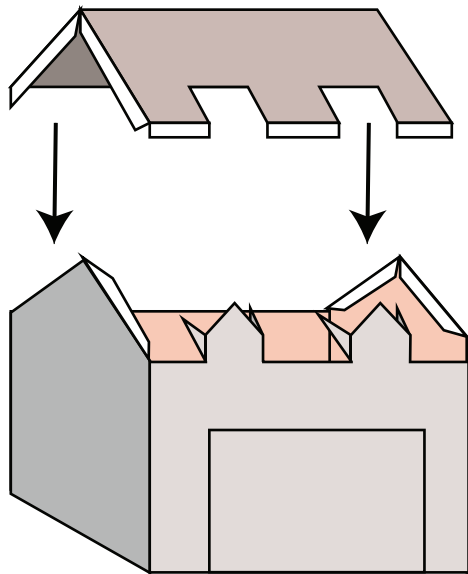
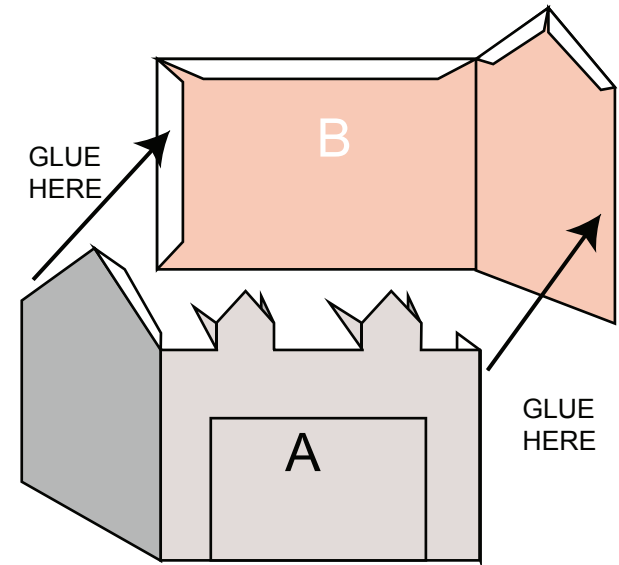
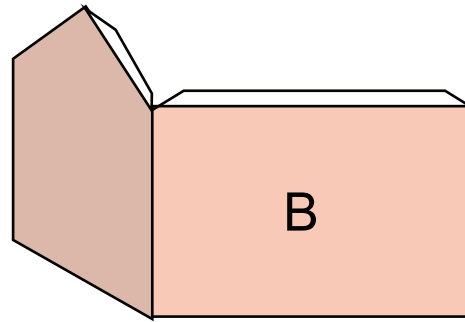
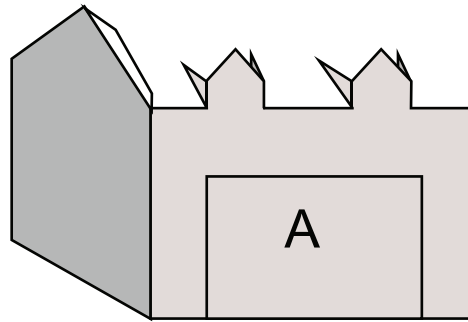




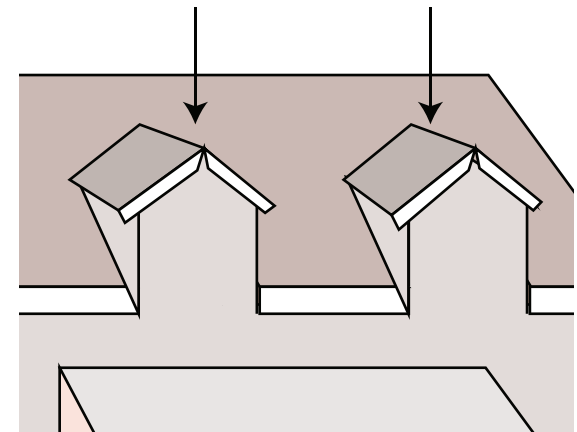


# INSTRUCTIONS

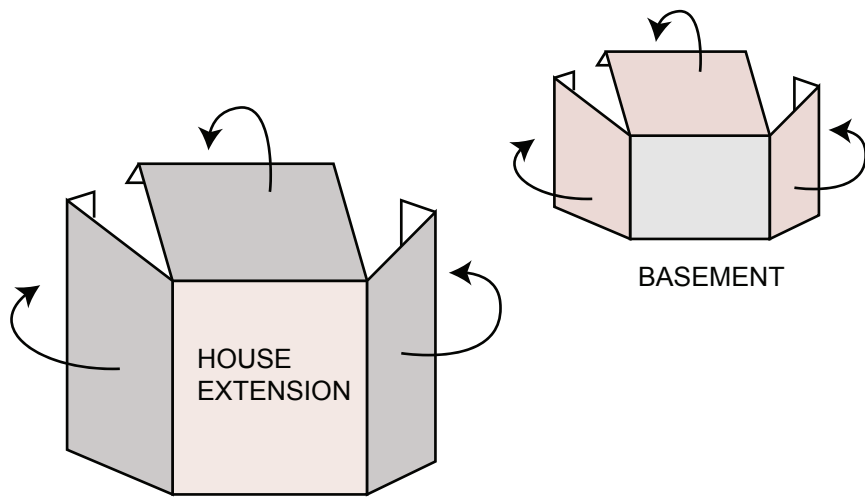
FOLD ON ALL DOTTED LINES



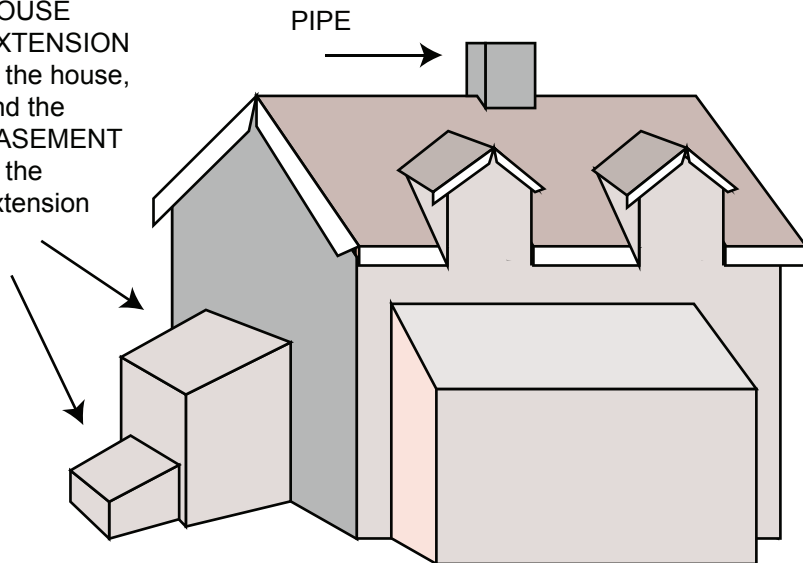
ROOF  
OVER  
WINDOWS







Attach the  
HOUSE  
EXTENSION  
to the house,  
and the  
BASEMENT  
to the  
extension



"CLOTHES" AND COW:  
Fold in the middle



FENCE: Fold in the middle  
(dotted line). Fold the whole fence  
as shown on the picture

HORSE & CARRIAGE  
Fold on dotted line,  
place two drops of glue on the top  
here:

