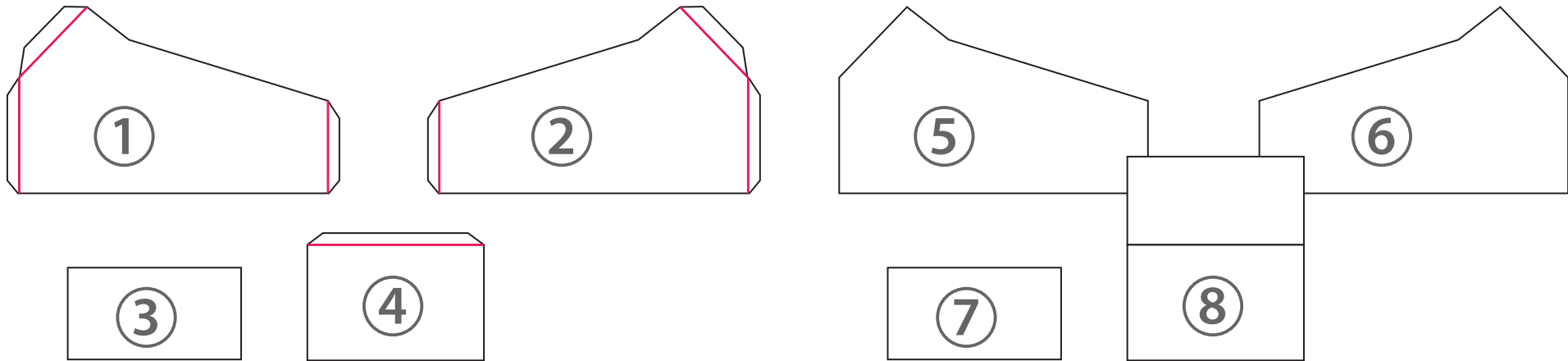


INSTRUCTIONS

Cut out pieces 1,2,3,4,5,6,7 and 8:



IMPORTANT

How to hand score card stock before folding.

The easiest (and nicest!) way to fold thick paper, is by scoring the piece to be folded first. You will need a butter knife and a ruler.

Take a ruler and place it on the cardstock, over the line you would like to score. Using the smooth edge of the knife (and never the sharp side), press down firmly as you move along the length of the ruler and down the paper. The more pressure you exert, the deeper the score will be. Do this two or three times, test first on a blank piece of card stock.

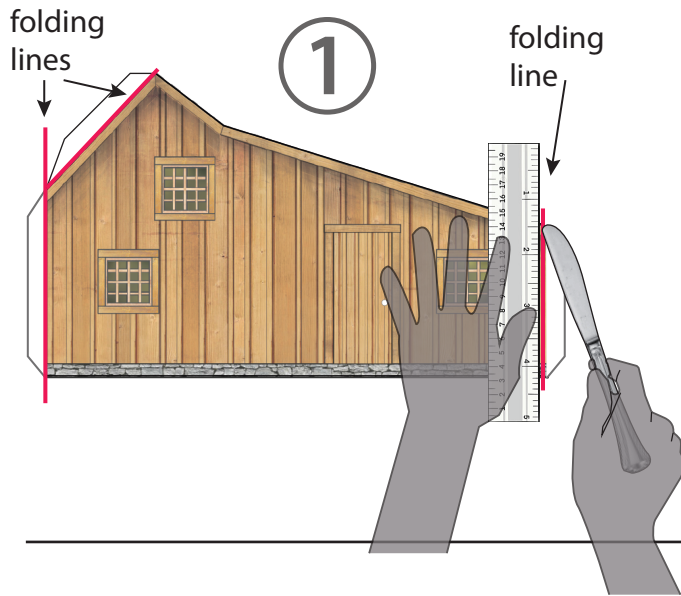
When finished, simply remove the ruler and your cardstock is ready to be folded.



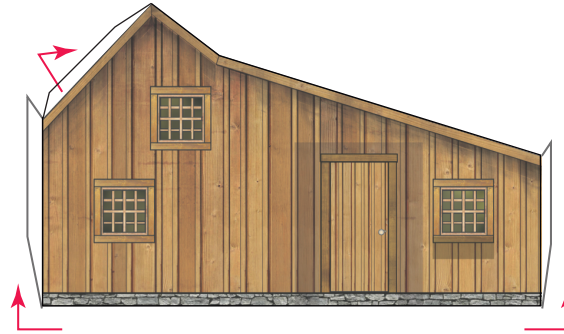
Or use the hobby knife instead of the butter knife.

With the help of a ruler, cut VERY SLIGHTLY (don't apply pressure!) the cardstock as you move (once) along the length of the ruler and down the paper. Just the top layer of the cardstock should be cutted. Then fold.

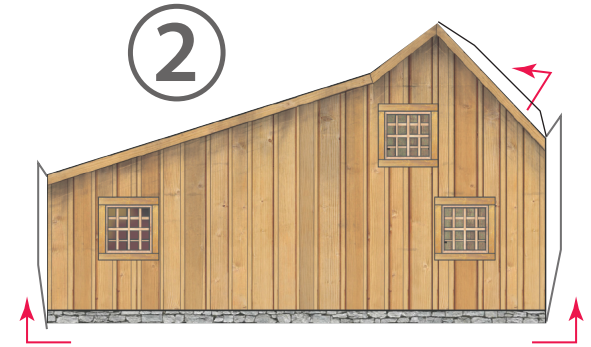
Piece 1: Using a butter knife and a ruler, score the card stock on the three folding lines.



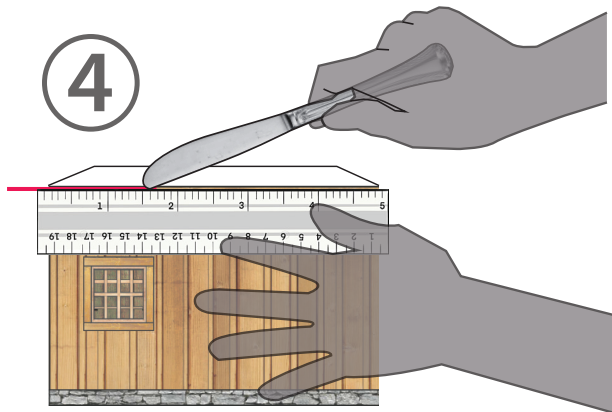
Fold inn all flaps



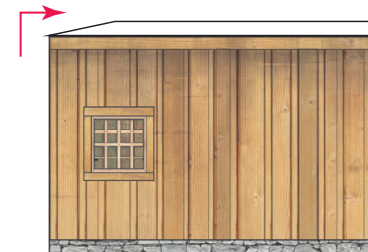
Repeat procedure with piece 2.



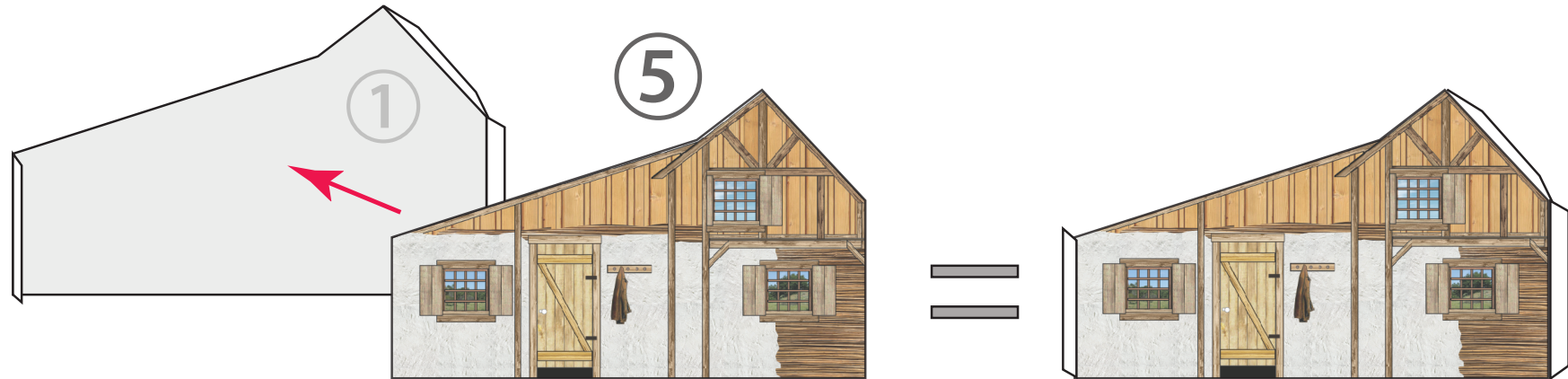
Piece 4: Score the card stock on the folding line.



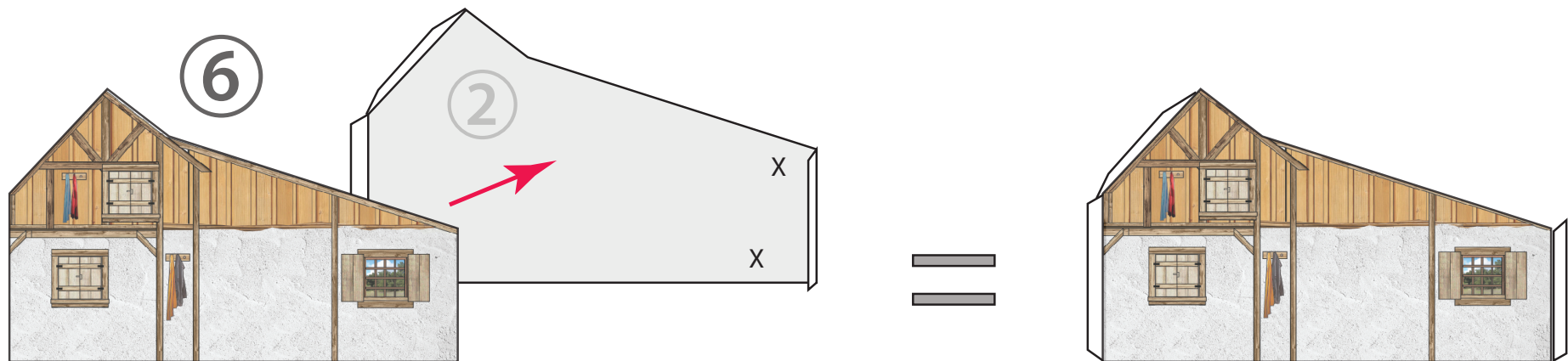
Fold flap inn.



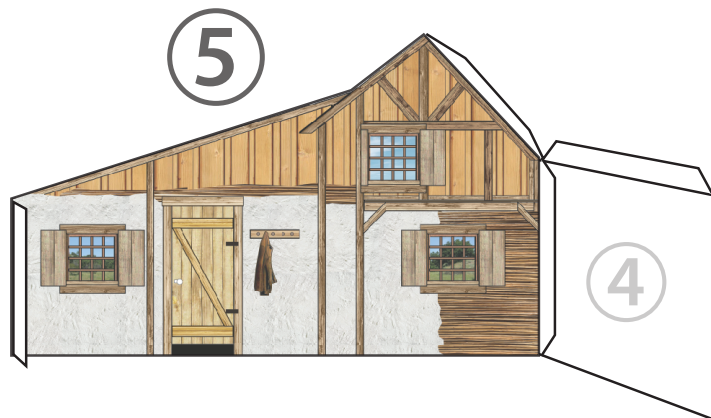
Glue piece 5 behind piece 1.



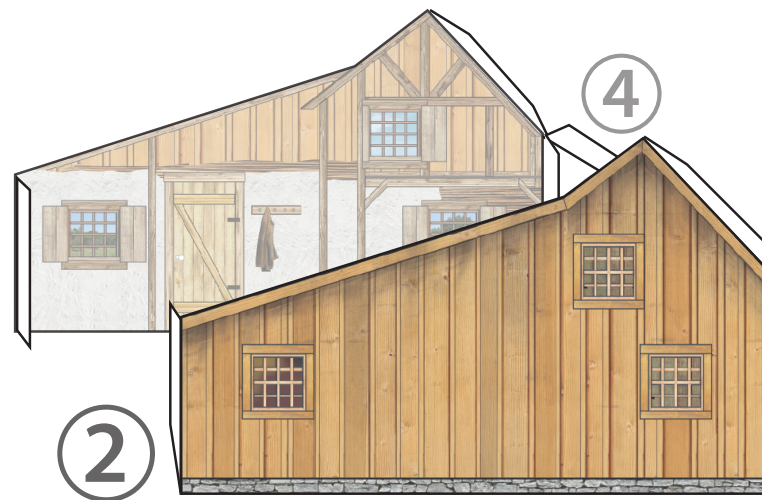
Repeat procedure with pieces 2 and 6.



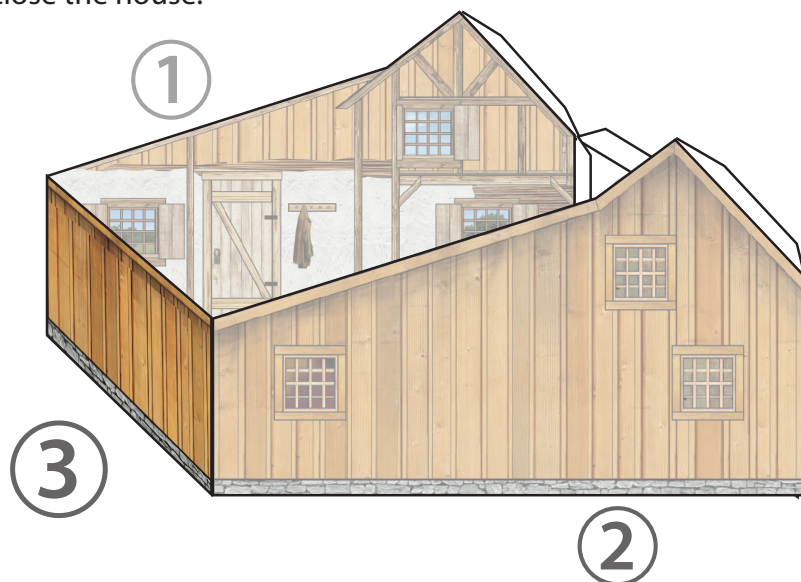
Glue piece 5 to 4 (piece 4 printed side outwards).



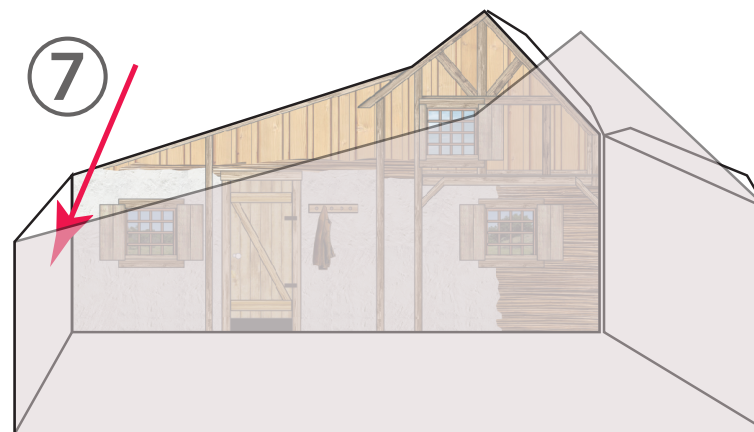
Glue piece 2 to 4, as shown.



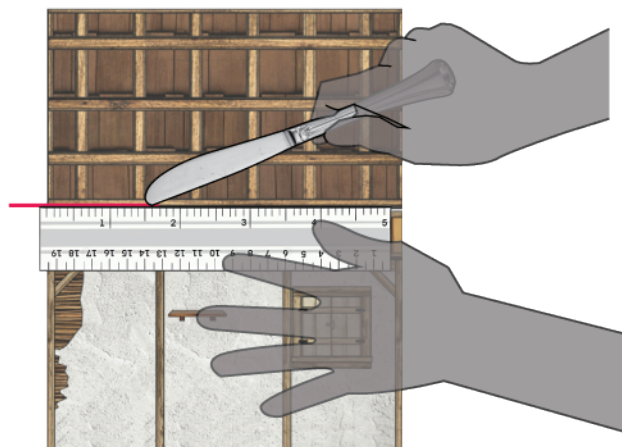
Glue piece 3 to 1 and 2 as shown, to close the house.



Inside the house, glue piece number 7 to piece number 3.



8 Piece 8: Score the card stock on the folding line. Fold as shown.

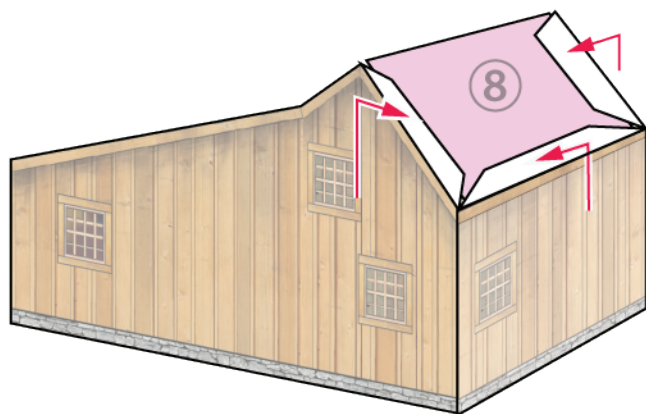


Glue piece 8 to 4, inside the house.

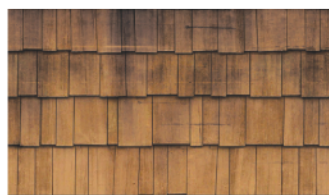


8

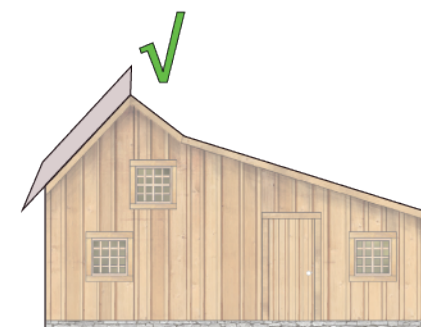
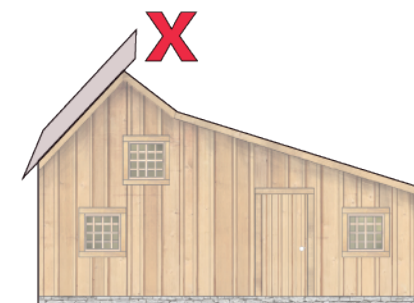
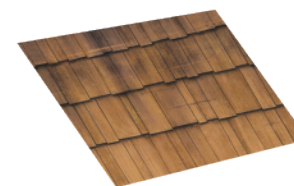
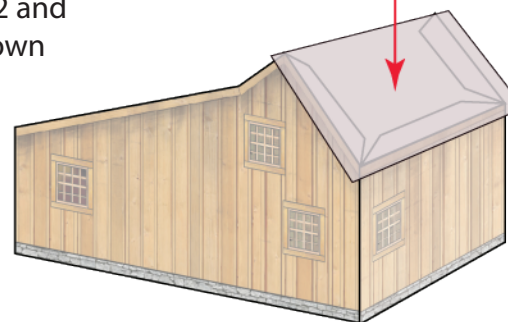
Glue all three flaps to the back side of piece 8:



ROOF 2

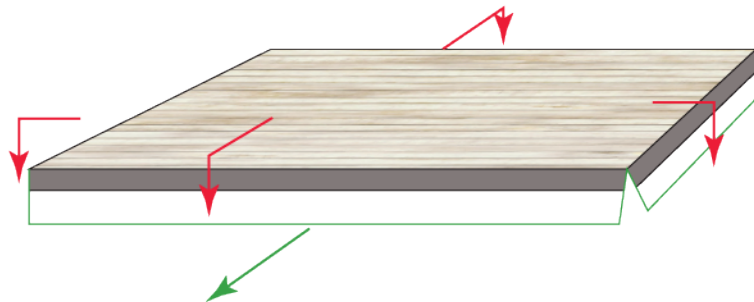
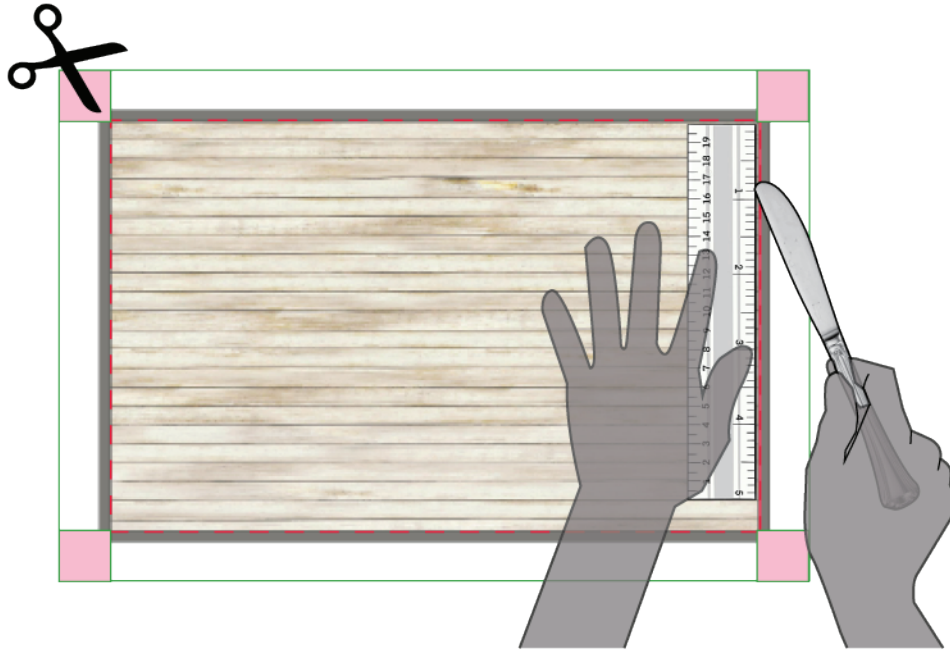


Cut ROOF 2 and glue as shown

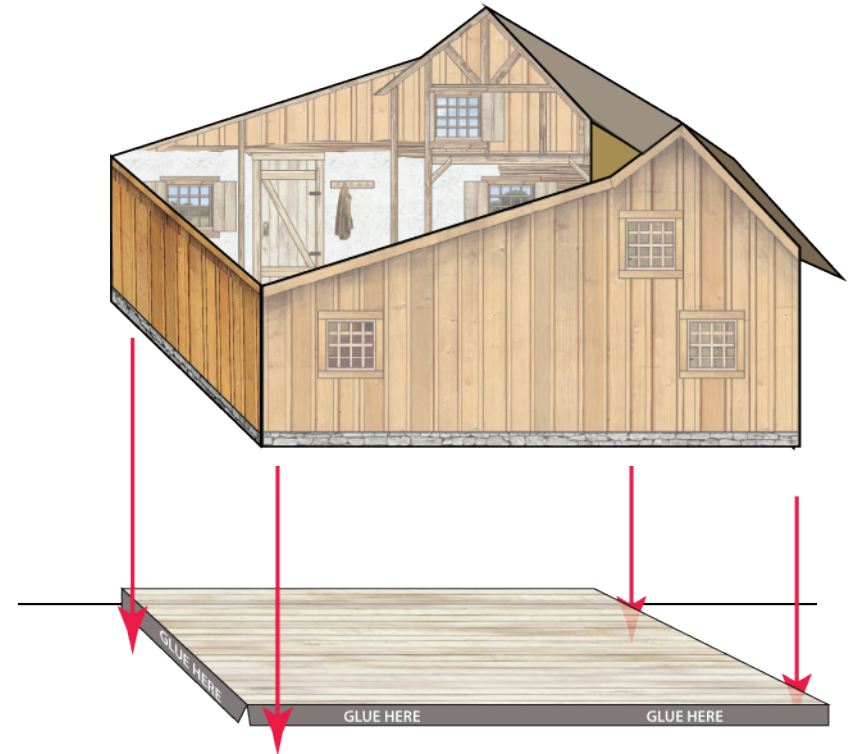


FLOOR

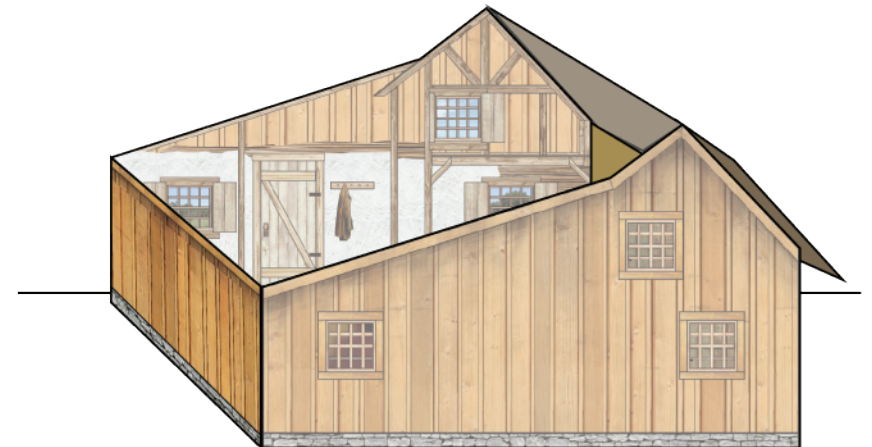
Cut out the four corners of the card stock.
Score and fold the grey borders as shown.



After folding, cut excess of paper:

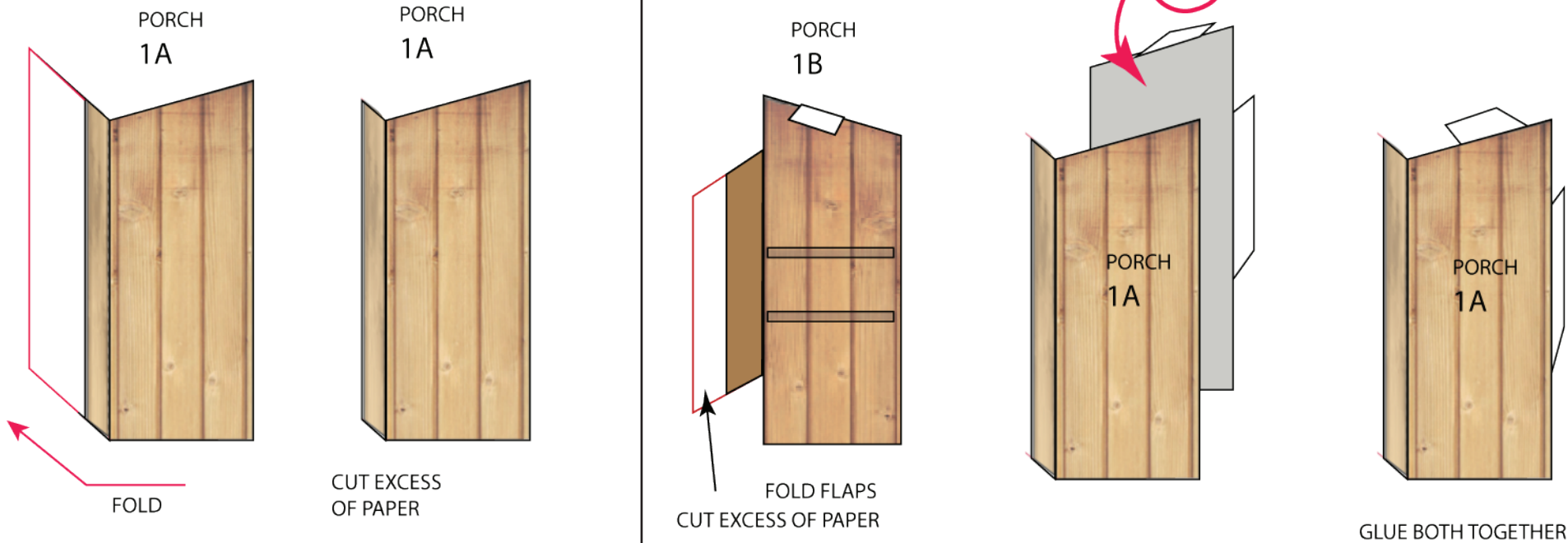


Put a small amount of glue on the grey borders.
Place the house frame around the floor as shown.

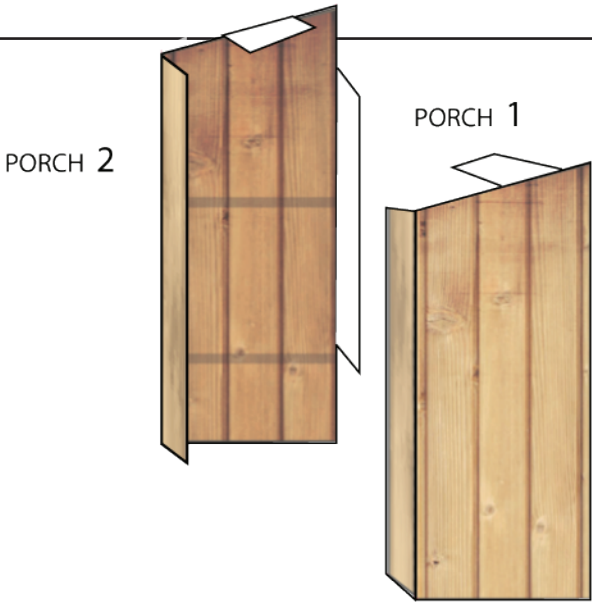


PORCH

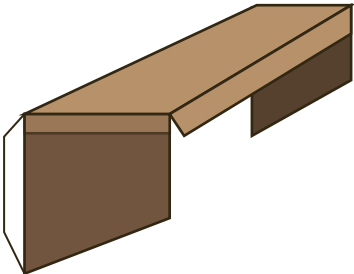
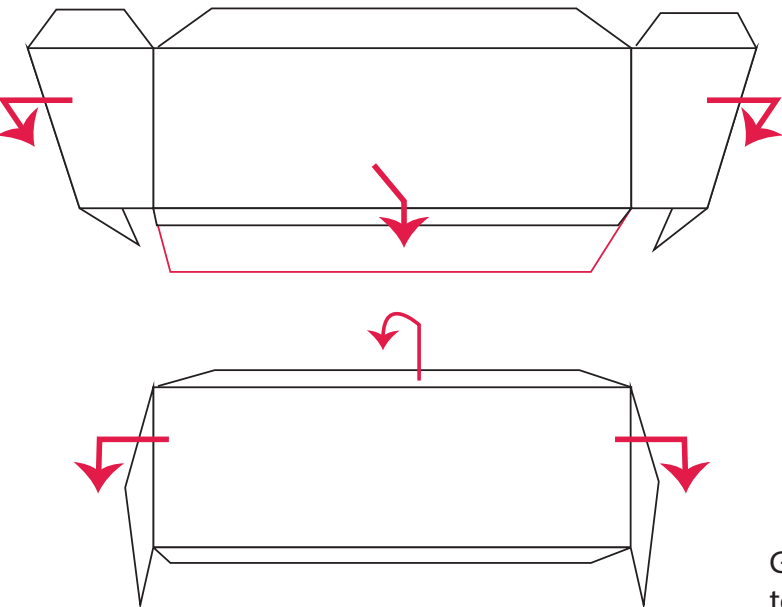
Cut out Porph 1a,1b, 2a and 2b



REPEAT
with PORCH 2a and 2b



PORCH SHELVES Fold and glue on place as shown.



MILK CAN BUCKET

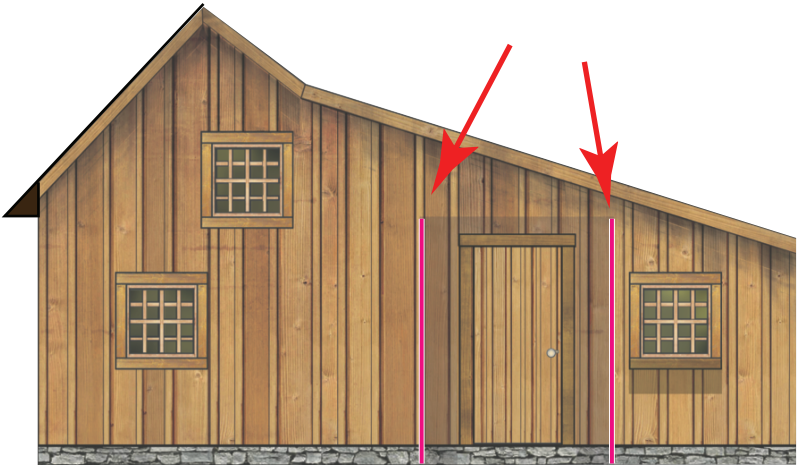
Glue them as shown (diagonally),
to make them more visible from the front



PORCH 2



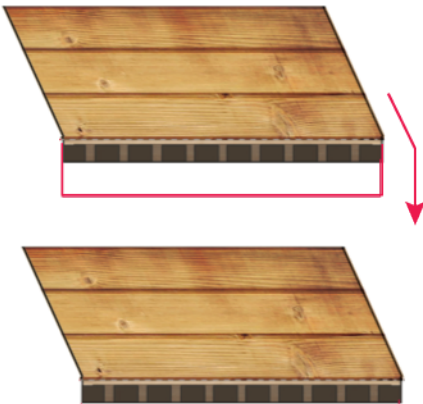
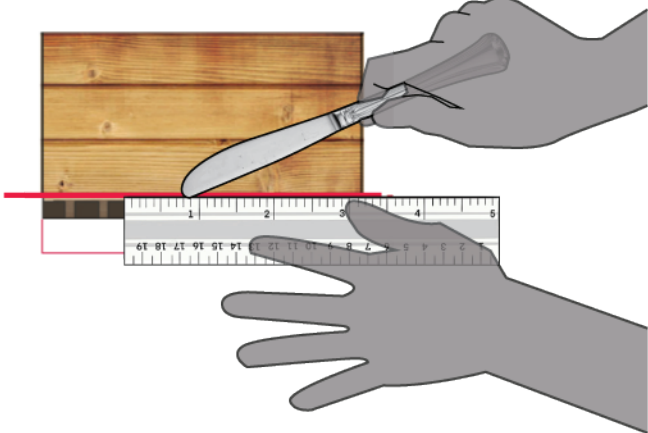
PORCH 1
(Berry pies
on upper shelf!)



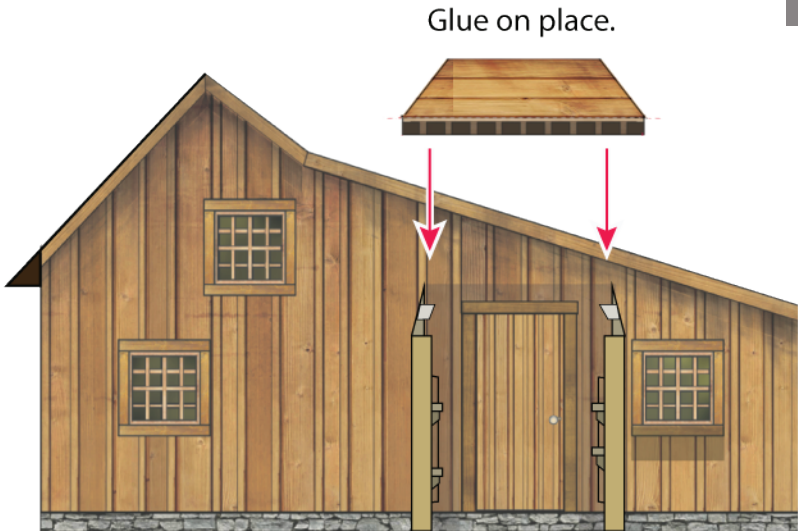
Glue porch walls here

PORCH ROOF

Score and fold as shown

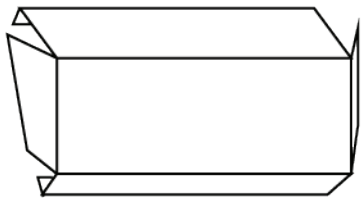
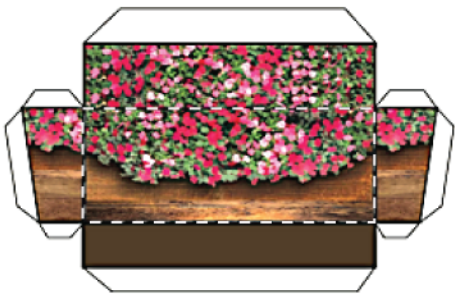


Cut excess of paper



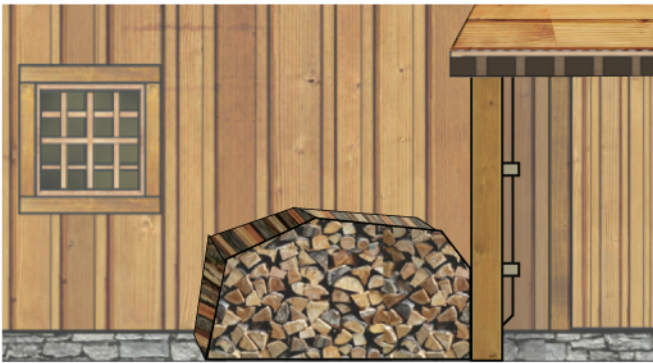
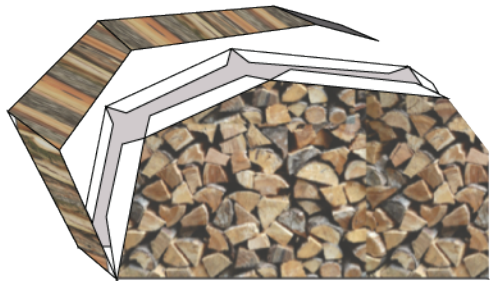
FLOWERS

Cut, fold and glue under the window.



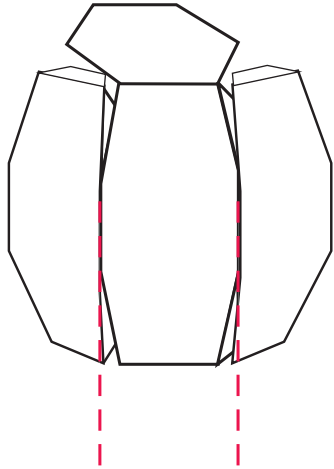
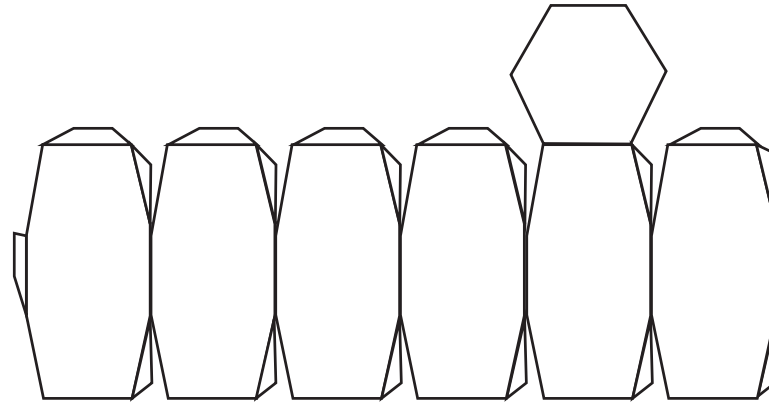
PILE OF WOOD

Cut, fold and glue on place as shown.



BARREL

Make an insision on all red lines,
and fold all flaps inn.



Fold in each side of the barrel,
until the circle is completed.
Glue all flaps.



WOODEN DOORMAT



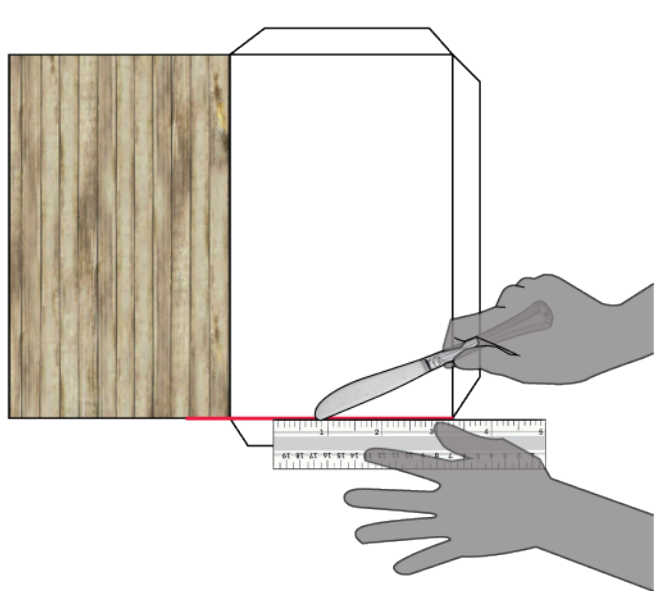
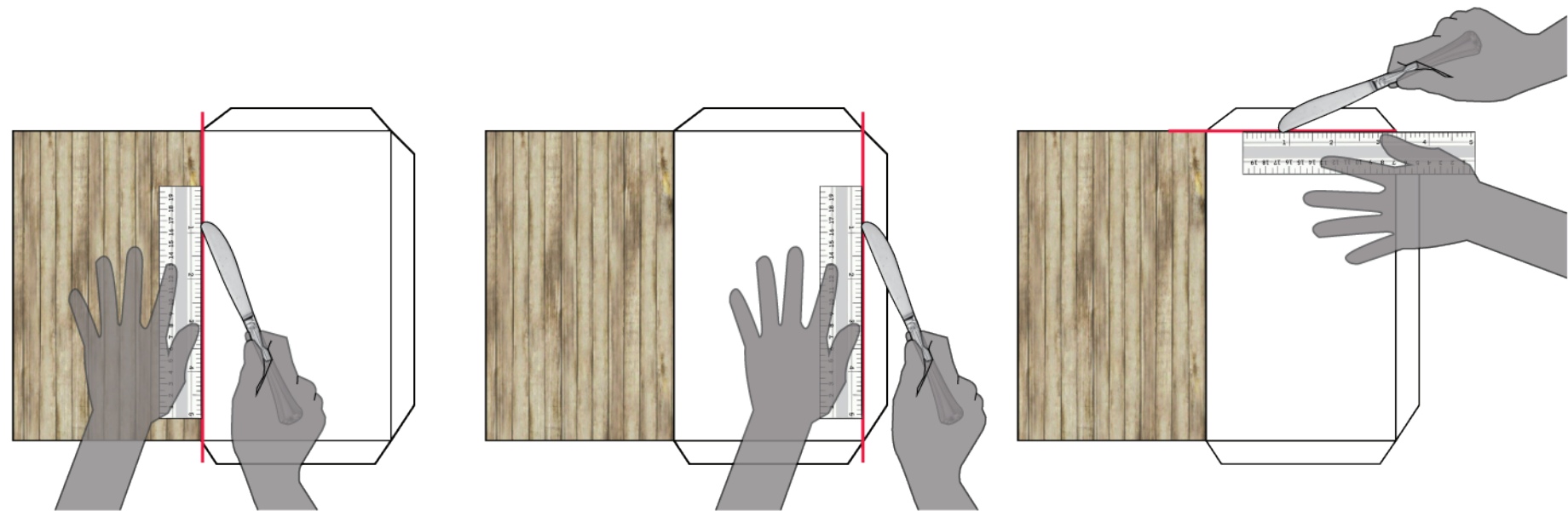
Fold as shown, cut excess of paper.



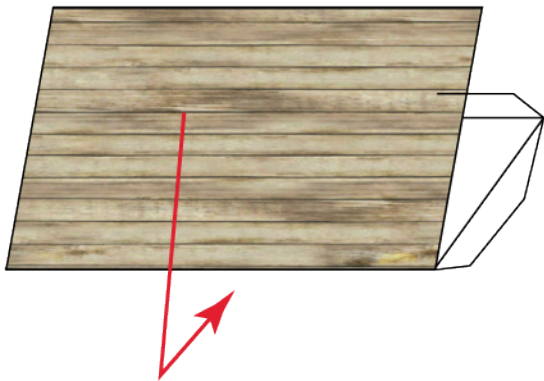
Place it in front
of the door, inside
the porch.

FLOOR 2

Score the card stock on the folding line and on all flaps.



Fold and
glue together



Fold all flaps down

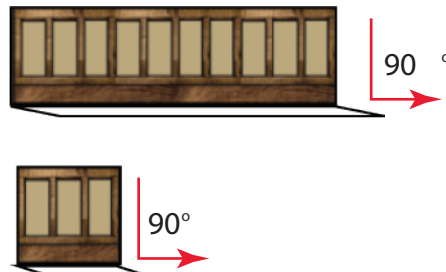
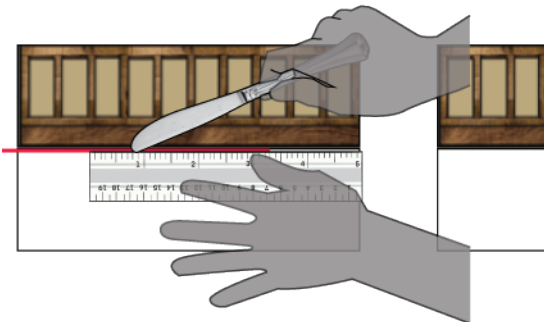




Glue "FLOOR 2" over the yellow line.

RAILING

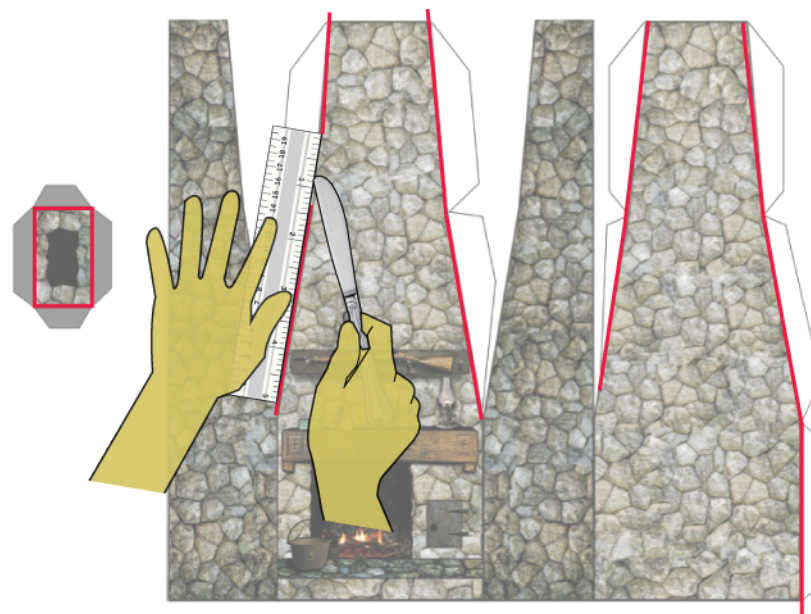
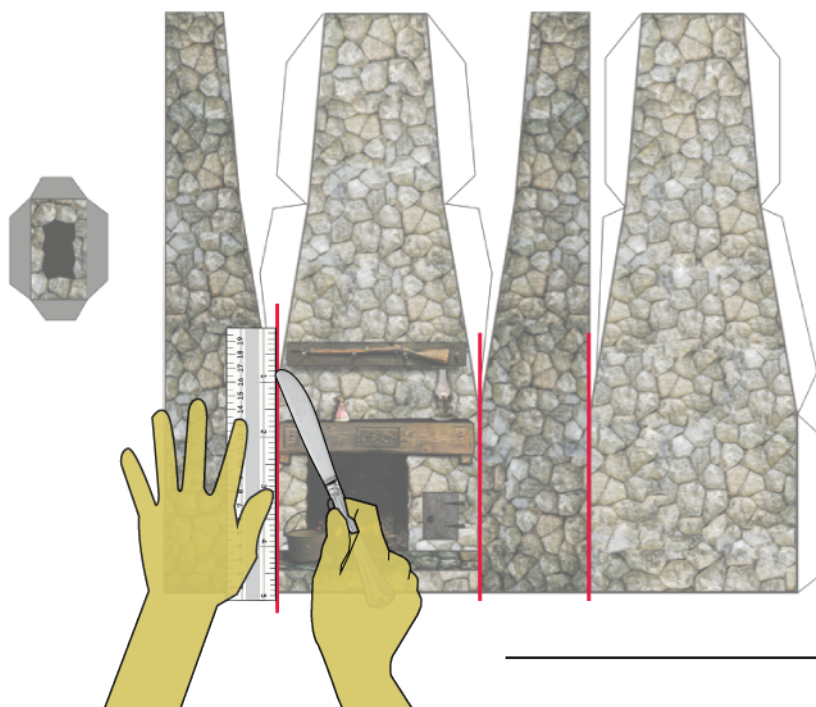
Score the card stock and fold backwards.



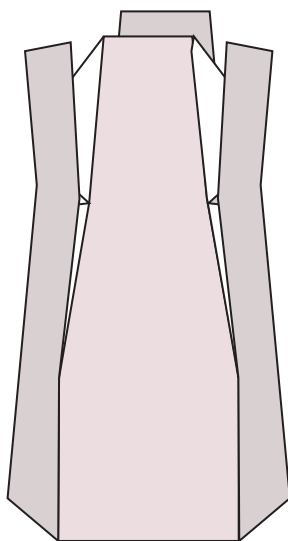
Glue the railing flaps under "FLOOR 2" as shown

FIREPLACE

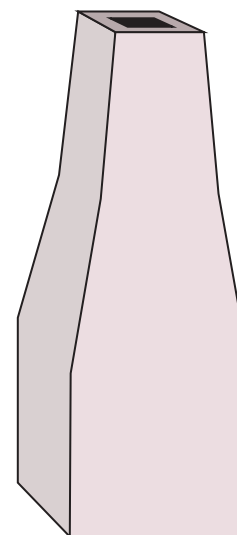
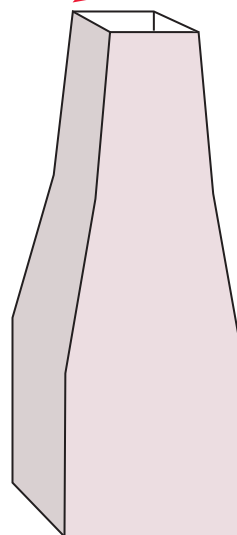
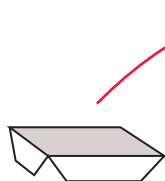
Score the card stock on all folding lines and flaps:



Fold all flaps inwards.
Fold the walls of the fireplace,
glue all flaps to close the form.



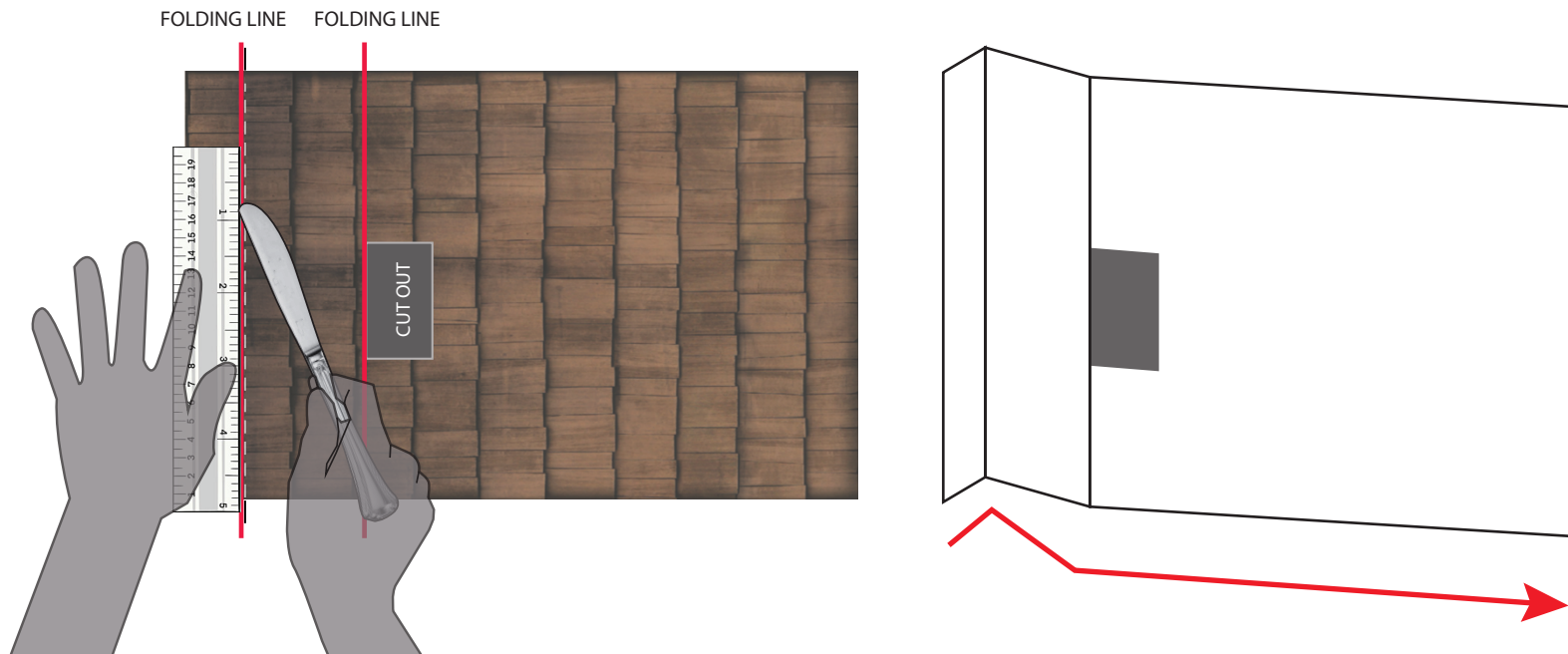
Fold and
glue the top
of the fireplace.



Just place (don't glue) the fireplace
inside the Little House. That way
it will be easy to furnish the
bedrooms.

ROOF 1

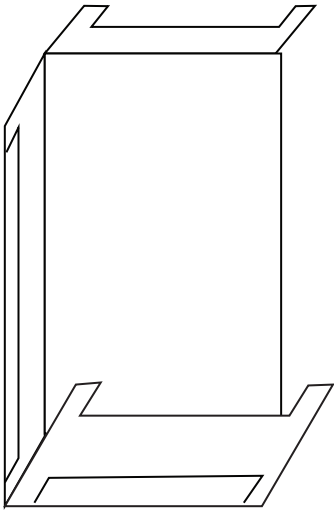
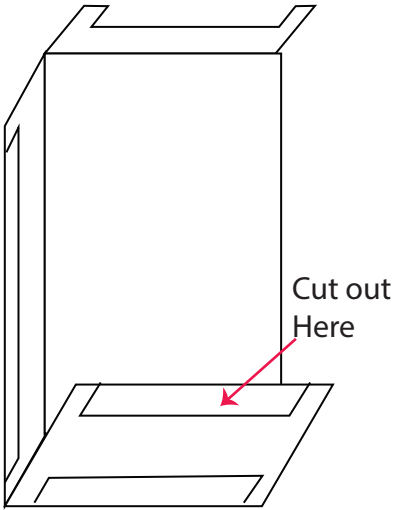
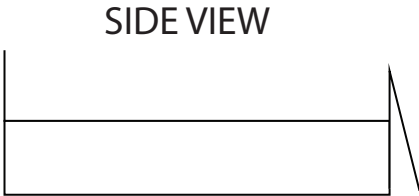
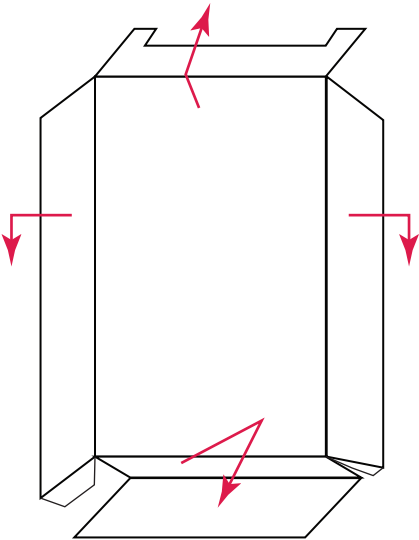
Score the card stock on both folding lines.
Using the hobby knife, cut out the rectangle. Then fold as shown.



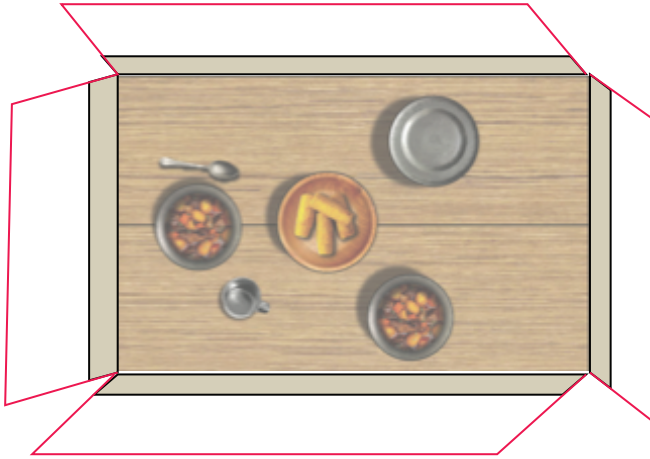
Close the little house...
DON'T GLUE the roof!



ALL BEDS



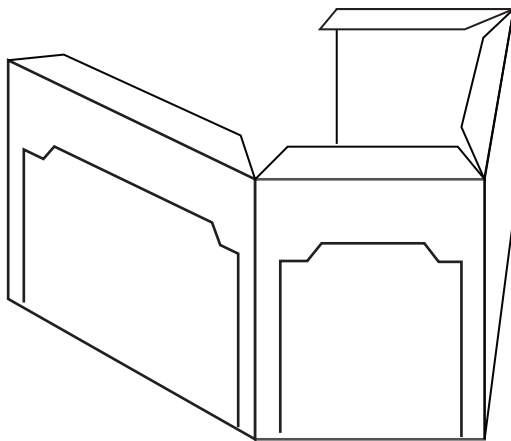
Fold all sides



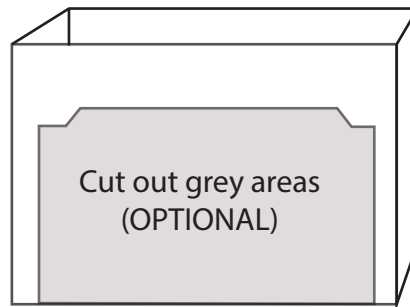
Cut out excess of paper



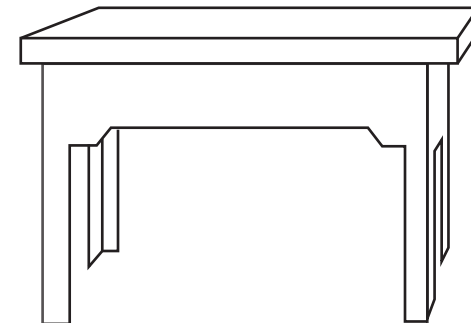
Fold and close the form.



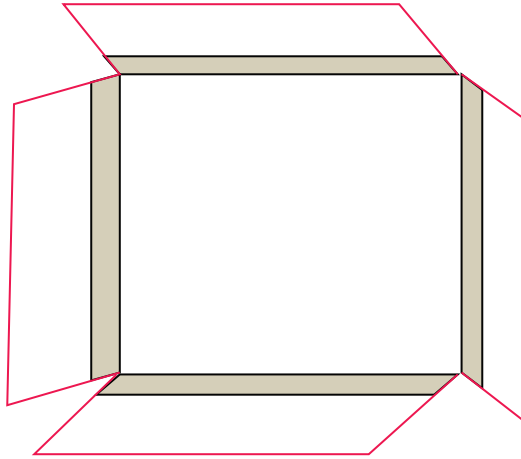
Cut out grey areas
(OPTIONAL)



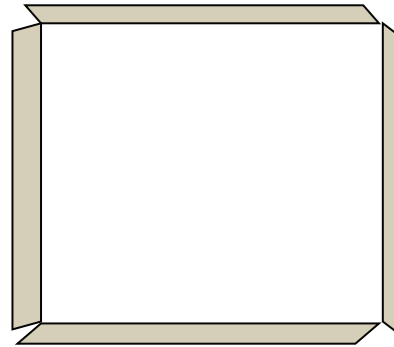
Glue the top on place



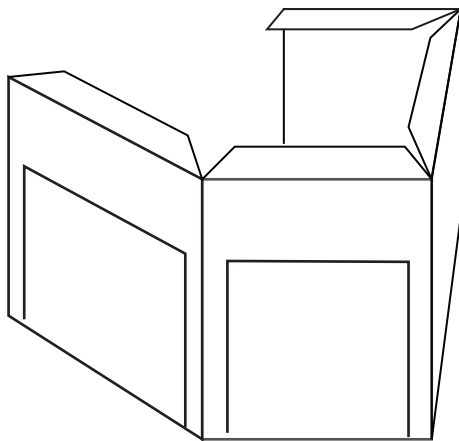
Fold all sides



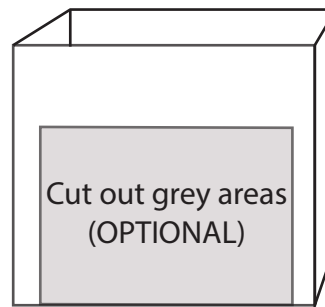
Cut out excess of paper



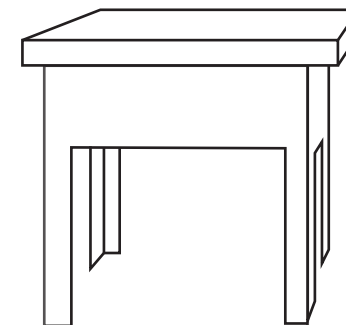
Fold and close the form.



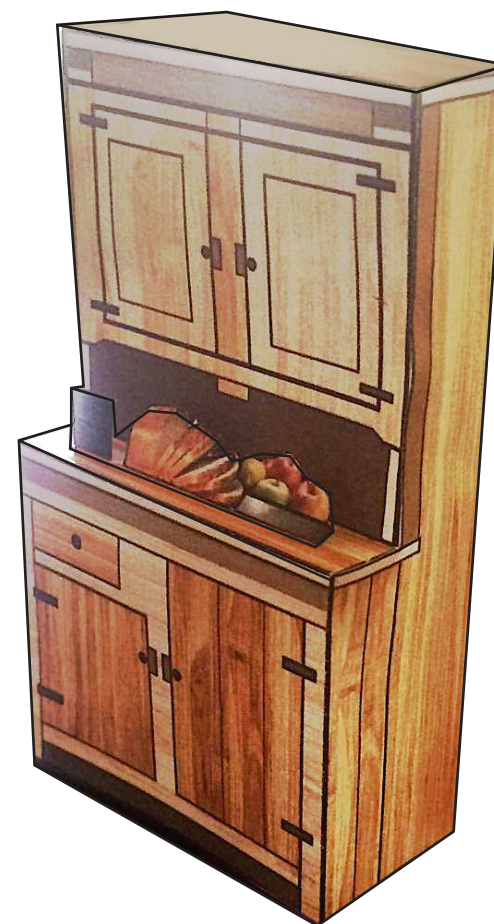
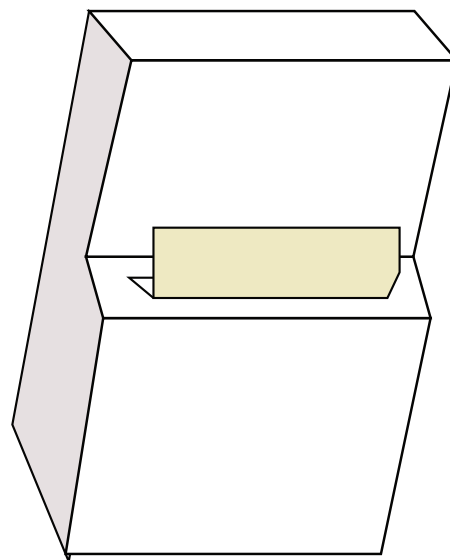
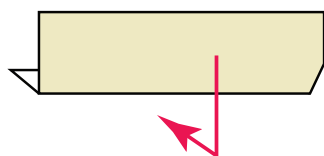
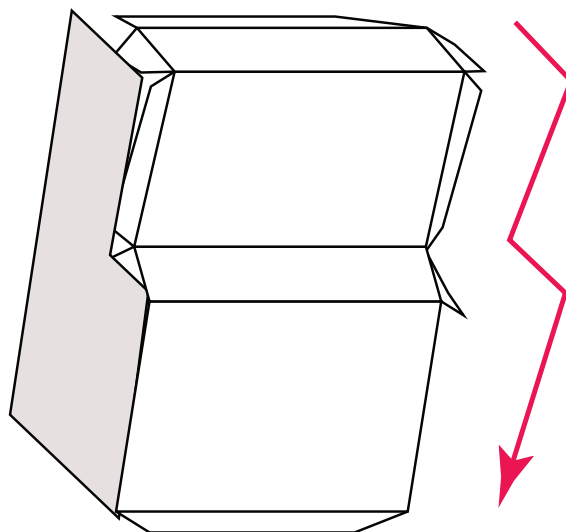
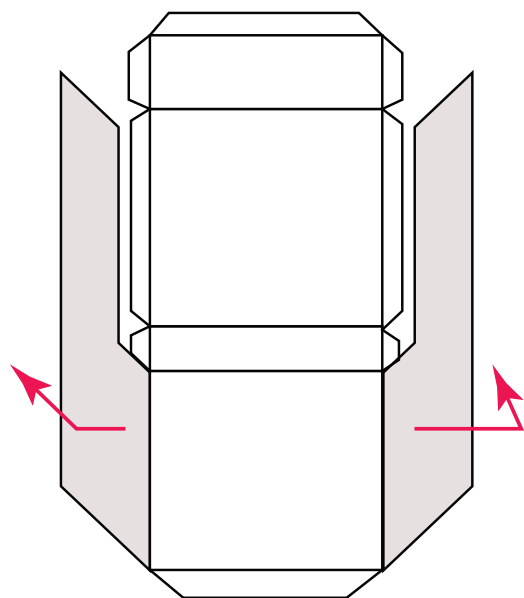
Cut out grey areas
(OPTIONAL)



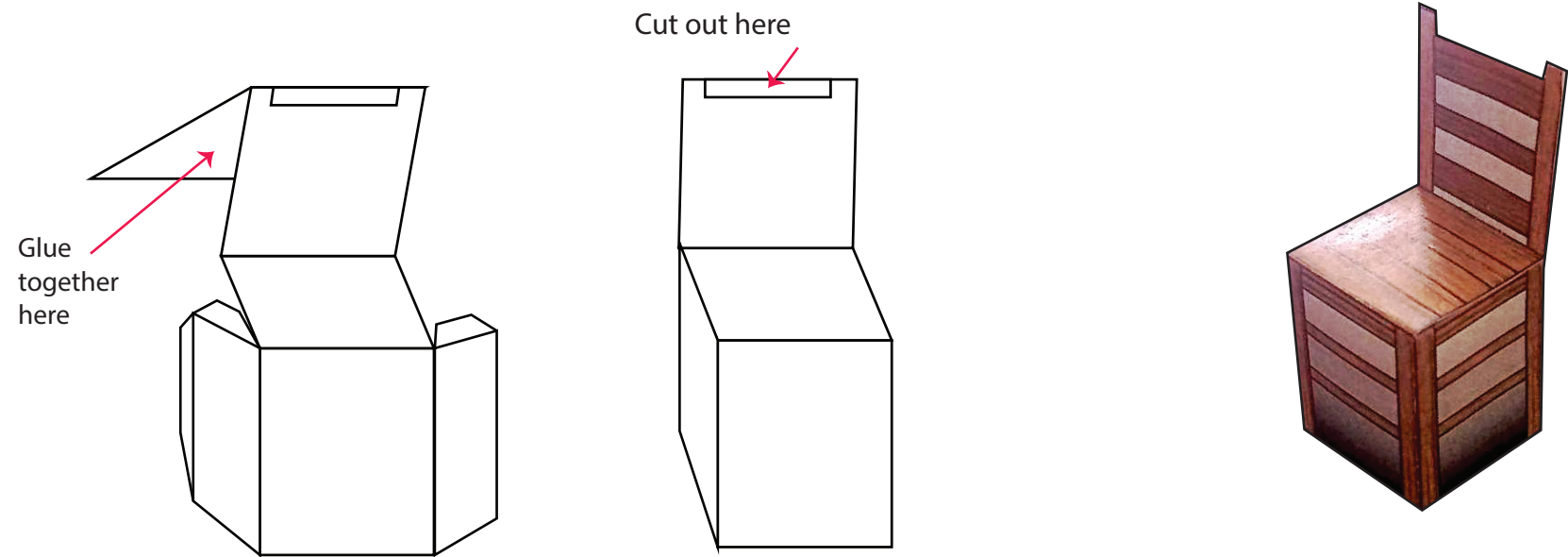
Glue the top on place



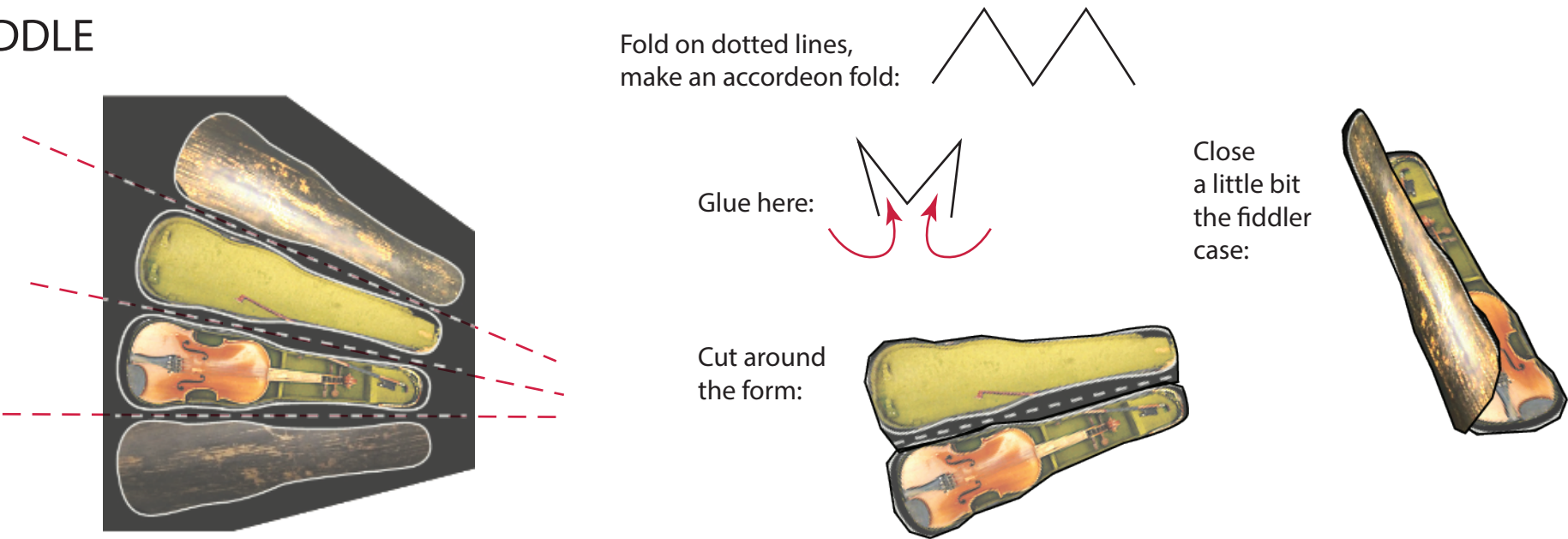
KITCHEN CABINET



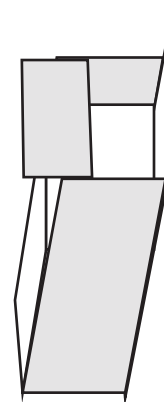
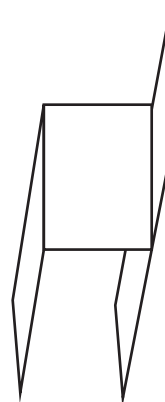
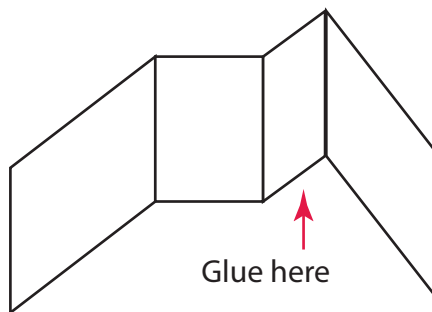
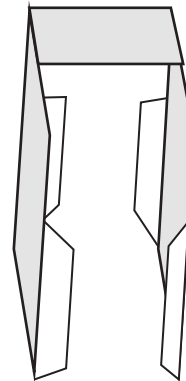
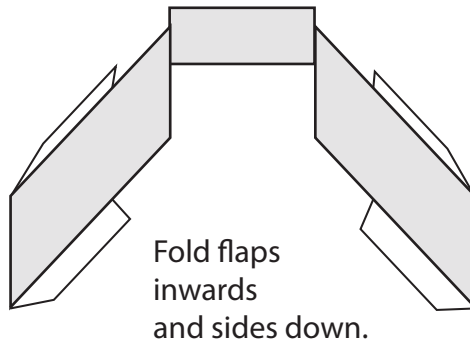
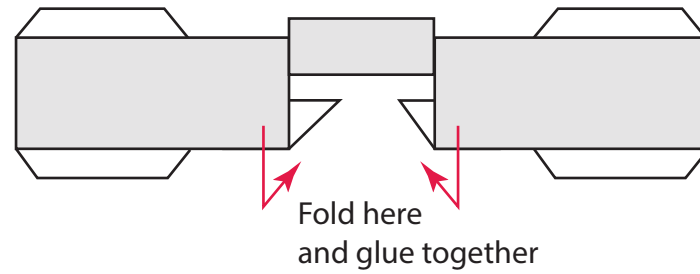
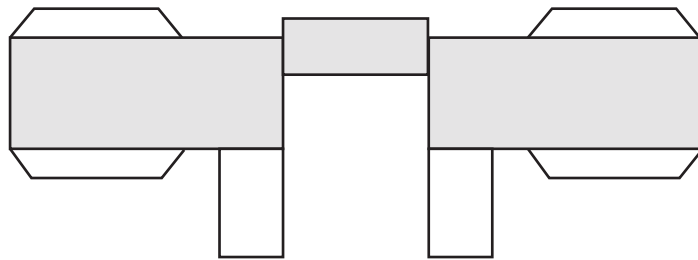
CHAIRS (four for the dinning table, and one for each bedroom)

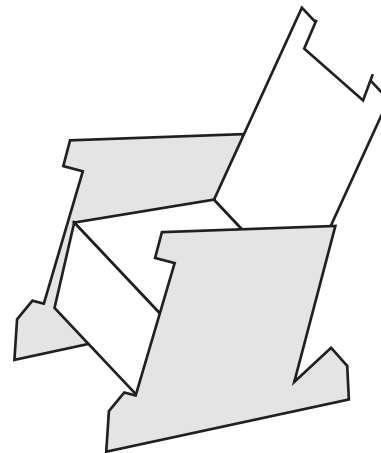
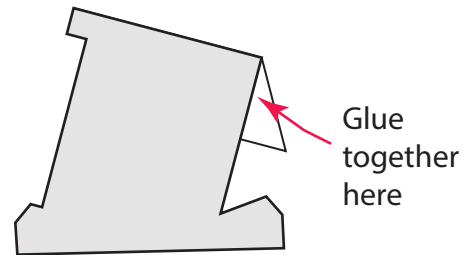
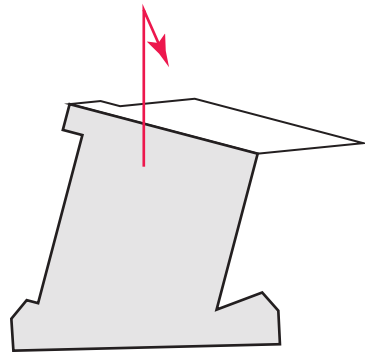
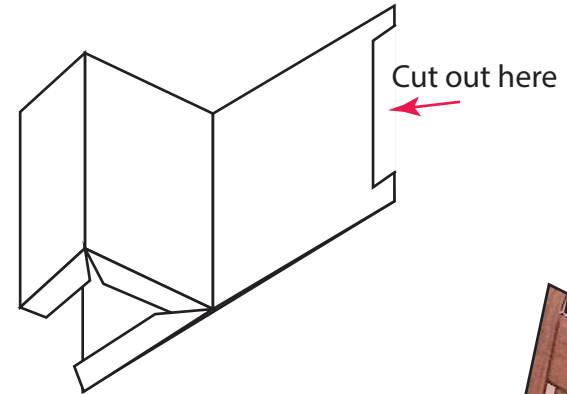
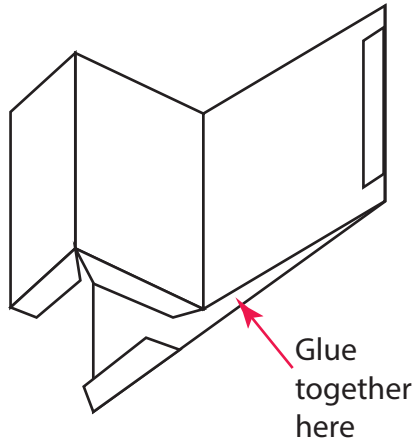
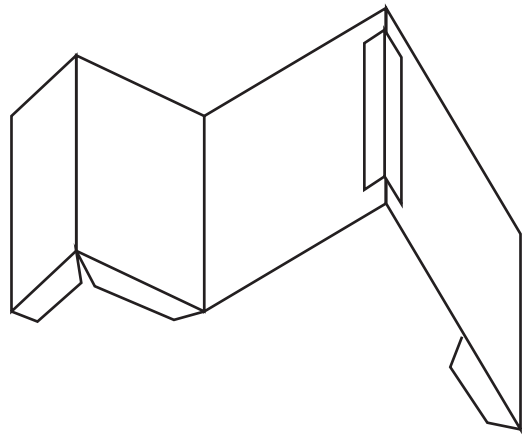


FIDDLE

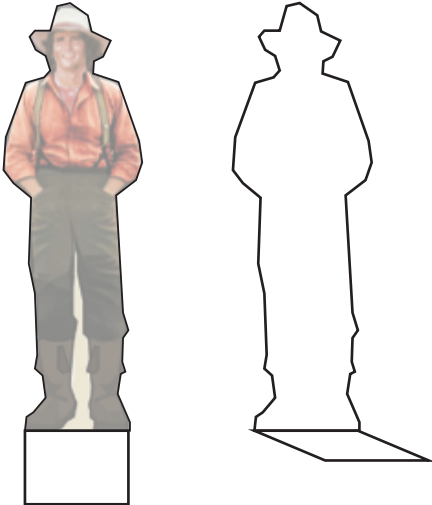


HIGHCHAIR

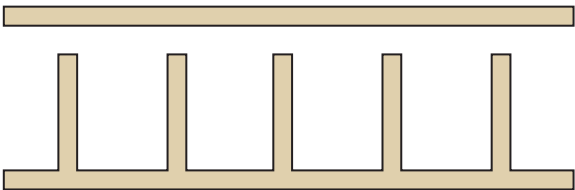




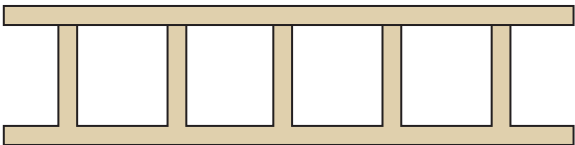
FAMILY FIGURES



LADDER

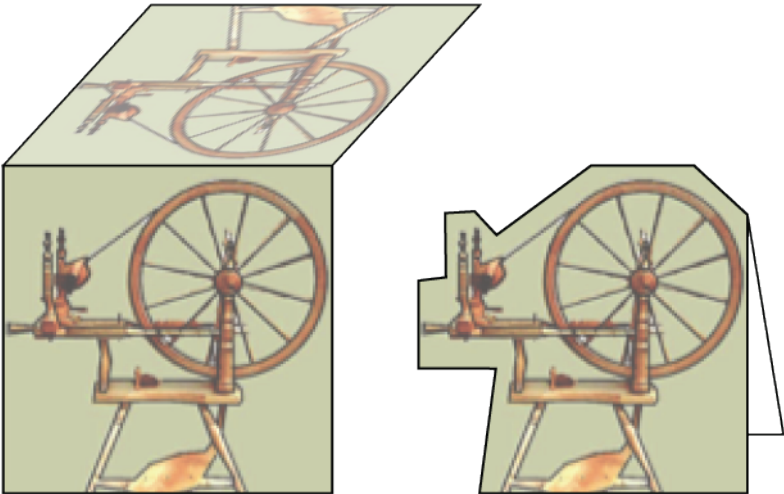


Cut both pieces



Glue as shown to "close" the ladder

SPINNING WHEEL



TRUNK 1 AND 2

