

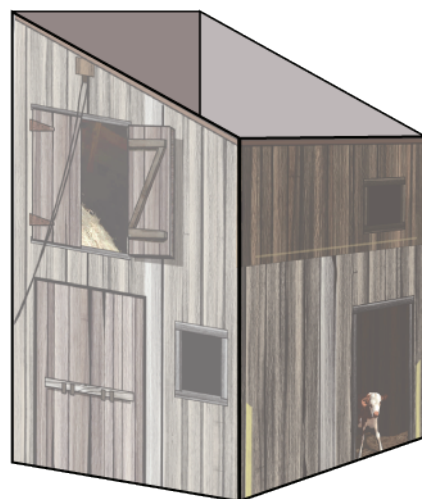
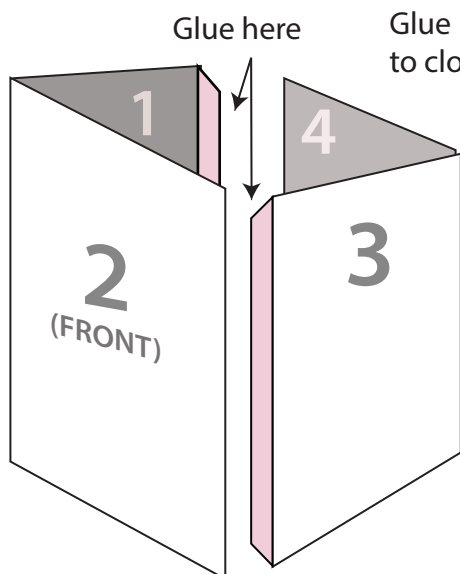
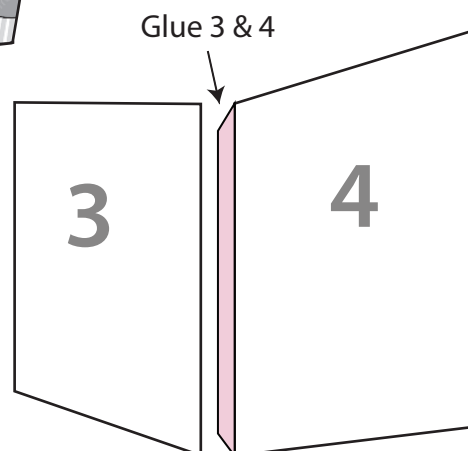
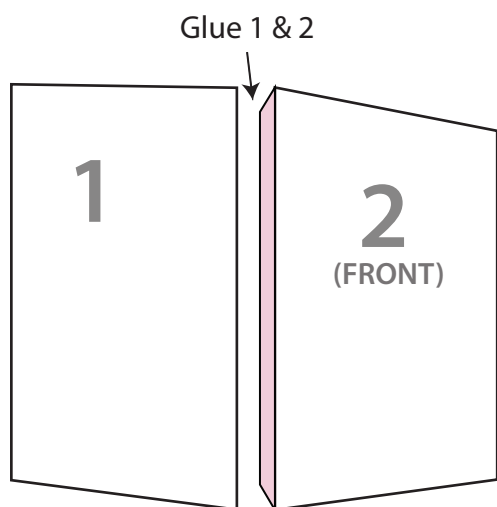
# LHOTP BARN: INSTRUCTIONS

[www.paperprairie.art.blog](http://www.paperprairie.art.blog)

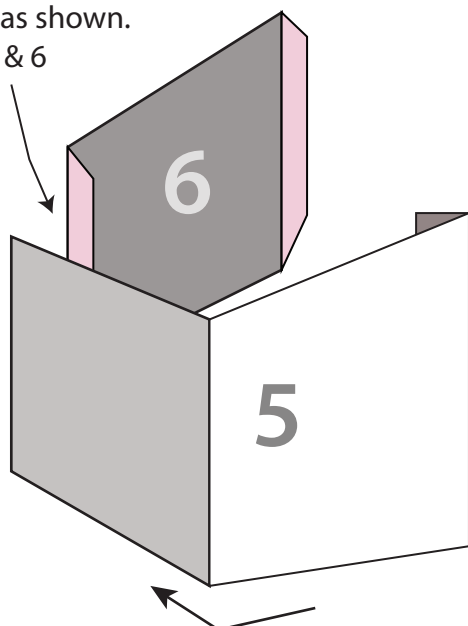
**PAGE 1**

If working on card stock,  
use white glue  
on all tabs.

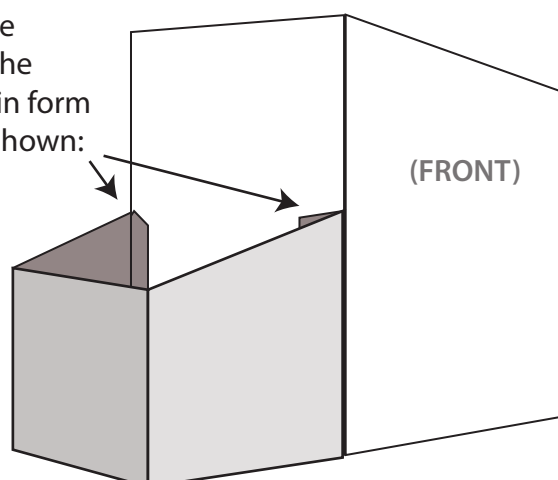
If working on ordinary  
paper, use Glue Stick

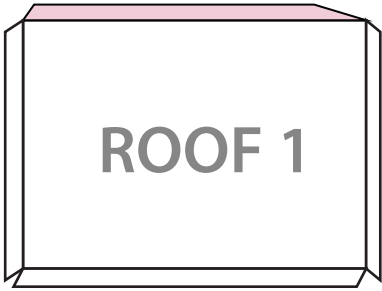


Fold 5 as shown.  
Glue 5 & 6

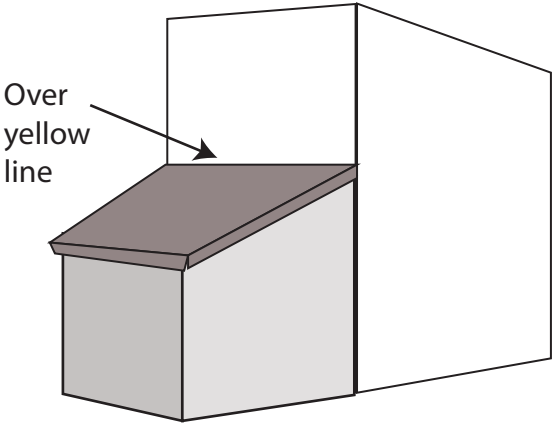


Glue  
to the  
main form  
as shown:

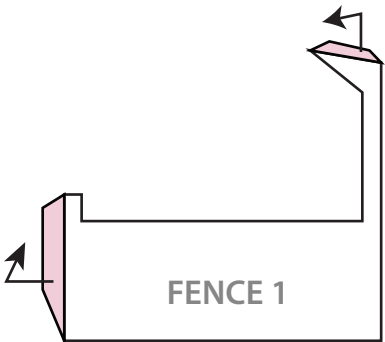
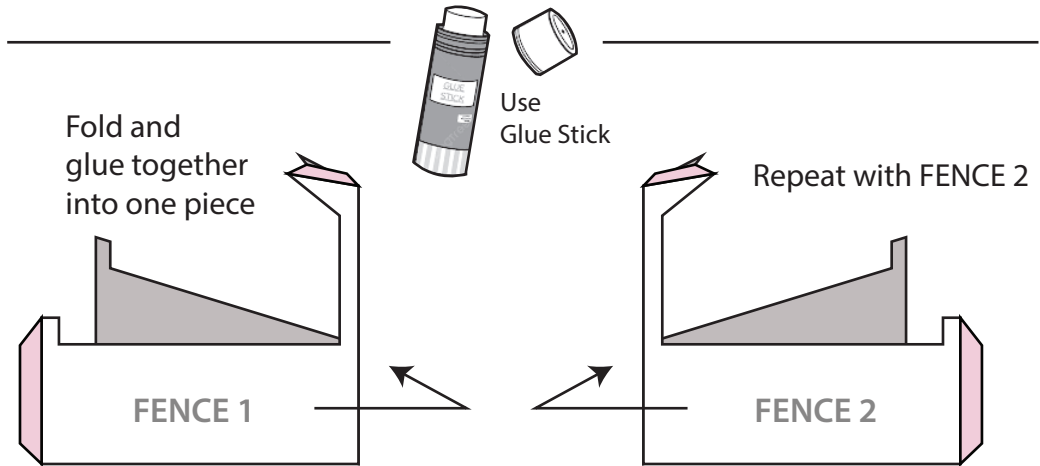
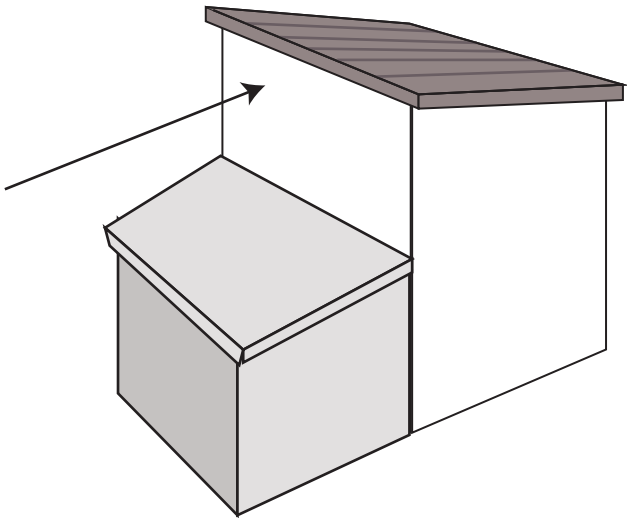




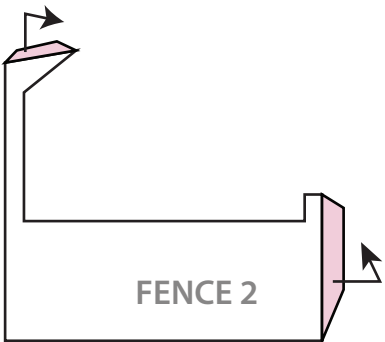
Fold down all four sides,  
glue on place as shown



Fold down all four sides,  
glue on place as shown



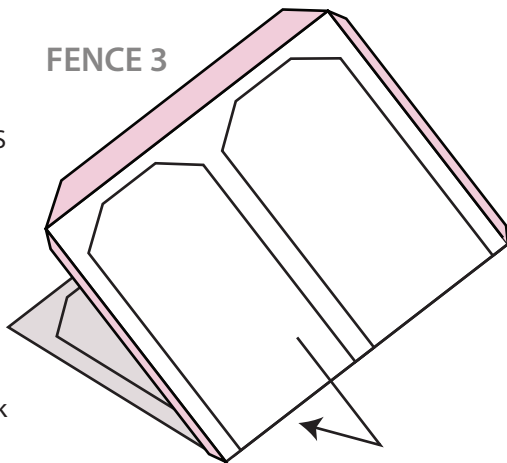
Fold  
all tabs



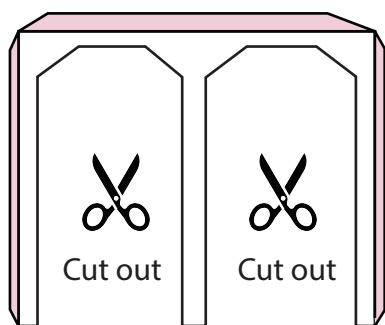
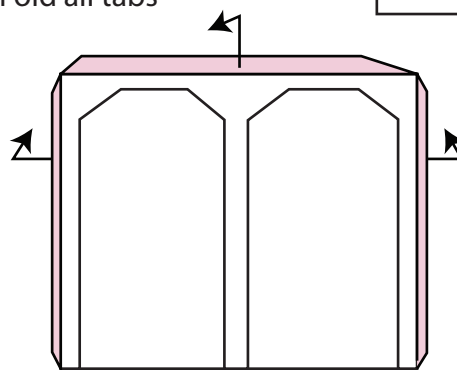
FOLD &  
GLUE BOTH SIDES  
TOGETHER  
INTO ONE  
PIECE



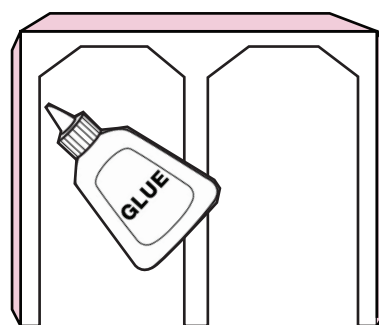
FENCE 3



Fold all tabs

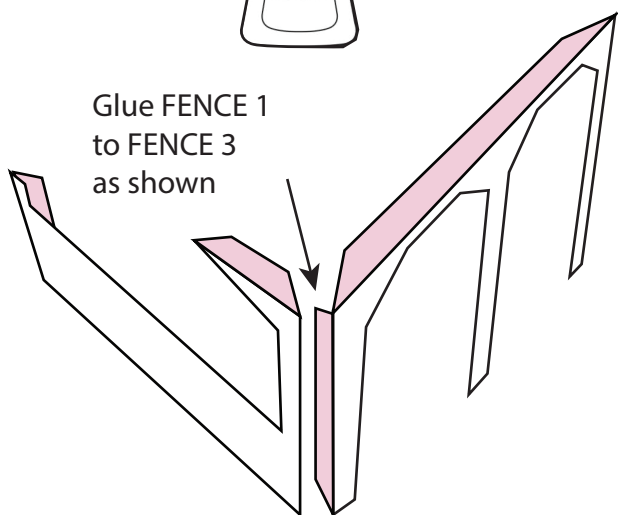


Reinforce with  
white glue  
any part that  
is "loose"

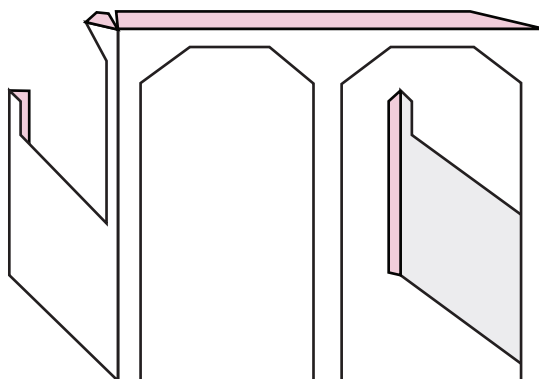
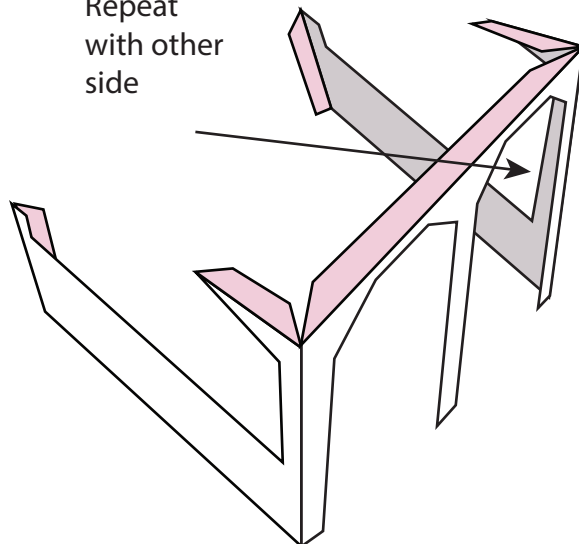


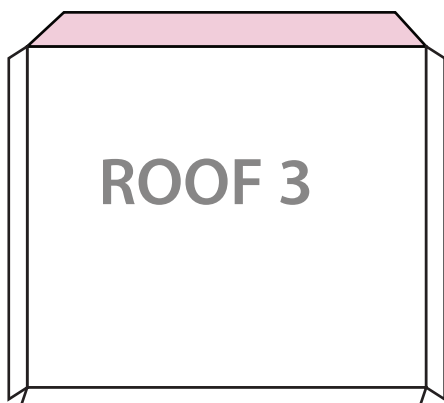
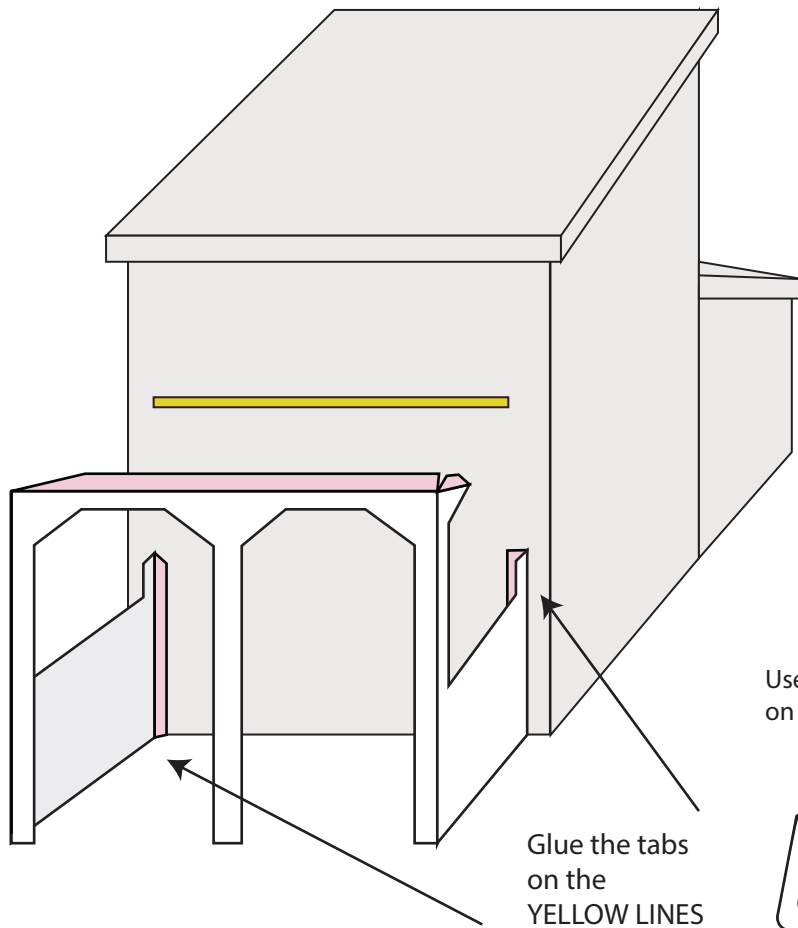
Use  
white glue  
on all tabs.

Glue FENCE 1  
to FENCE 3  
as shown



Repeat  
with other  
side





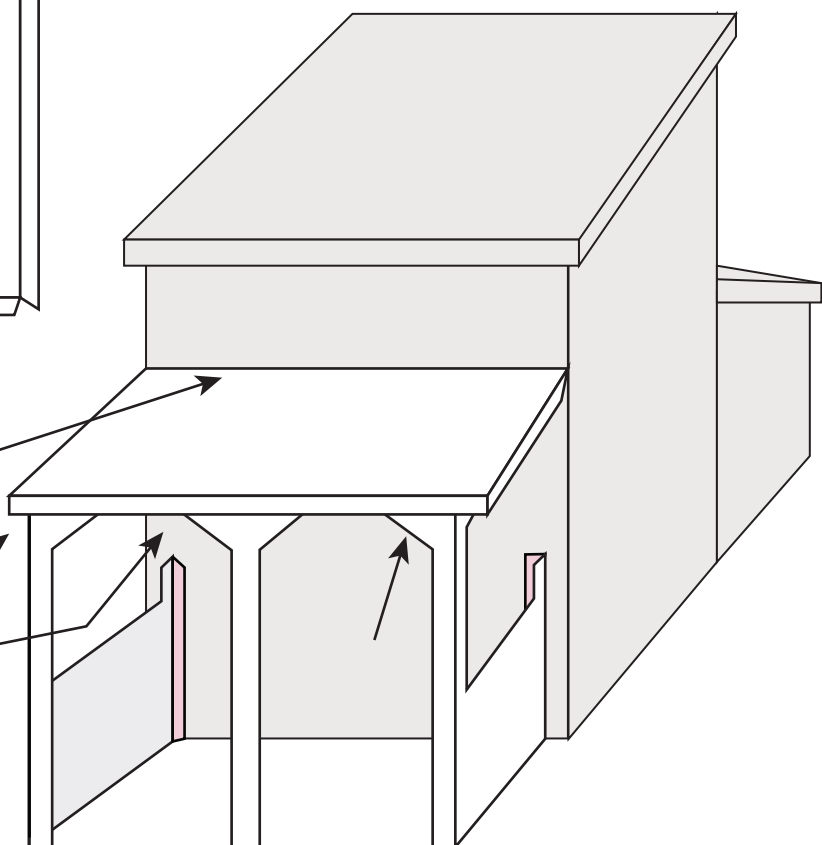
Fold down all four sides

Glue the roof tab over the yellow line

Glue inner tabs to the roof



Use white glue on all tabs.

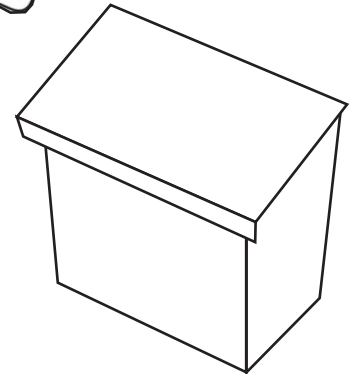
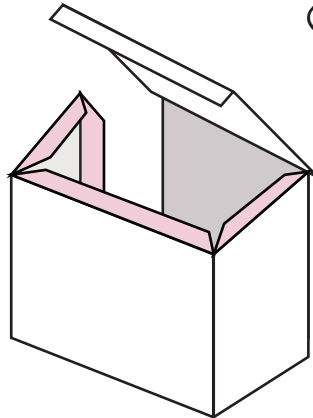
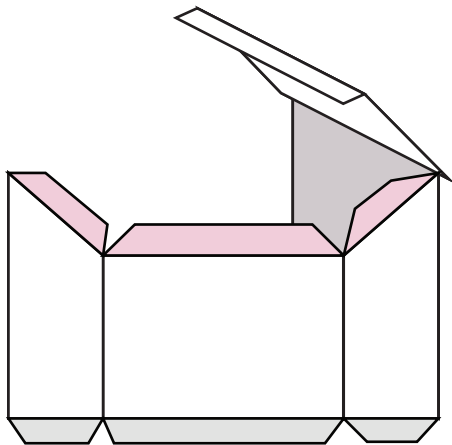


# BOX

Fold and glue as shown.  
Place in front of the Barn, see picture.



Use white glue  
on tabs.



# HORSES

Fold in the middle.  
Glue (two drops!) both sides, inside, on the upper part  
(see the two "x"),  
Fold tabs and glue them over each other.  
Cut around the form at the top.

